

Dimension Analysis

SYSPRO 8

Reference Guide

Published: November 2025



CONTENTS

Dimension Analysis

Exploring	1
Starting	5
Solving	7
Using	14



Dimension Analysis

Exploring

Where it fits in?

The **Dimension Analysis** feature lets you dynamically define financial reporting centers without having to design and maintain a segmented or structured General Ledger. This is achieved by implementing a standard chart of accounts, defining tailored reporting categories and appending financial data to dimensions. We have simplified the linking of transactions to dimensions by populating default dimensions based on business logic.

Functionality

Dimension Analysis is available for programs within the following modules:

- Accounts Receivable
- Accounts Payable
- Cash Book
- Inventory Control
- Sales Orders
- Purchase Orders
- Assets
- Work in Progress

The Business Activity Queries functionality forms the basis of a Dimension Analysis dashboard that is supplied as part of the Embedded Analytics. Various filters within this dashboard let you manage the data you want to view.

The functionality includes the ability to create budgets against dimension codes, capture dimensions during purchase and sales order entry, and apply distribution templates that define fixed splits between dimension codes, which streamlines financial tracking and reporting across the system.

Benefits

- Rich opportunity for analysis:
 - Data can be 'sliced and diced' according to your unique requirements.Detailed financial analysis and comprehensive reports can be provided regularly and with little effort.

- Accurately track business:
 - Dimensions are linked to transactions when they occur as this is driven by dimension categories relevant to the business process. This enables you to add business context to your data.
 - Dimensions can be linked to budgets to categorize budget data for more effective, targeted budgetary control and enhanced management and reporting capabilities.
- Outstanding flexibility:
 - Admin productivity is greatly increased.
 - Dimensions can be added as the business grows or focus is adjusted.
 - Data entry and reporting capabilities can be modified without significant restructuring.

Navigation

The programs related to this feature are accessed from the **Program List** of the SYSPRO menu:

- *Program List > General Ledger > Dimension Analysis*

Terminology

Chart of accounts

This is a listing of all accounts used within an organization's general ledger.

The element within the chart of accounts that acts as a transaction collector is known as the *natural account* or *general ledger code*. This is based on a specific account type (e.g. asset, liability, etc.) and is driven by the organization's activities.

FOR EXAMPLE:

1000 – Sales

In a *structured general ledger* the chart of accounts is configured with pre-defined sections within a fixed structure, where a new section must be defined for every business segment.

FOR EXAMPLE:

10-1000 is Cape Town Branch - Sales



The structure can be created using the **GL Structure Definition** program.

Dimension accounting

Dimension accounting uses a standard chart of accounts for all segments of the business, which typically only consists of the natural account (i.e. the Ledger Code Details section of the GL structure definition).

All other attributes required for the analysis of financial data, are configured as dimensions.

Dimension category

Dimension categories are reporting levels that are defined according to the unique requirements of your business.

FOR EXAMPLE:

If your business wants to report financial data per branch, then you would create a *Branch* dimension category.

Dimension code

Dimension codes are reporting units that are configured against a dimension category (i.e. reporting level).

FOR EXAMPLE:

If your business wants to report financial data per branch, and you have branches in various cities, then each of these cities will be created as a dimension code.

To simplify the recording of dimensions against transactions, we suggest that you define default dimension codes against master data elements.

If a master data element forms part of a transaction, SYSPRO pre-populates the dimensions based on the defaults defined, resulting in minimal operator interaction.

Dimension templates

Dimension templates enable users to allocate a single revenue or cost amount across multiple financial dimensions based on predefined percentages. This functionality distributes transaction values to various dimension codes linked to the template dimension code, which itself does not hold any values. Instead, the values are allocated to the linked dimension codes according to the specified percentages.

FOR EXAMPLE:

A dimension category called **Regions** is linked to dimension codes **Coastal** and **Inland**. A template with predefined percentages has been created for the **Coastal** dimension code, to allocate 75% to the East coast and 25% to the West coast.

If you post a transaction amount of 1,000 to the **Coastal** dimension code, the system will automatically distribute the amount based on the template, e.g.:

East Coast: 75% of 1,000 = 750

West Coast: 25% of 1,000 = 250

The distribution can be viewed in the **GL Dimensions Query¹** program, which displays how the transaction amount is split among the linked dimension codes.

Master data

Master data refers to the core data that is absolutely essential for running operations within a business. It is data about key business entities that provides context for business transactions and operations. Data designated as master data can vary within industries.

FOR EXAMPLE:

Master data depicts the core entities of a business, such as customers, suppliers, materials, etc.

Posting rules (Dimension Analysis)

Posting rules can be defined against dimensions for specific ledger codes to provide additional control and ensure the **Dimension Analysis** is complete and valid.

FOR EXAMPLE:

If you don't want **Dimension Analysis** per branch against your balance sheet accounts, you can mark these accounts with a *not allowed* posting rule. An operator won't be able to capture **Dimension Analysis** for these accounts, regardless of the settings against individual business processes.

¹Program: GENPEQ

Starting

Prerequisites

Setup Options

To use this feature, the following setup option(s) must be enabled/defined:

Setup Options > General Ledger Integration > General Ledger Codes

- Dimension analysis

- When this is defined as **Transaction entry level**:

Transactions are tagged with dimensions when posted in the sub module.



Sub-module tables will not be tagged with dimension codes.

- When this is defined as **GL entry level**:

Transactions are tagged with dimensions when posted to the ledger.

- Integration level

We recommend that the **INTEGRATION LEVEL** of all ledger codes you want included in **Dimension Analysis** is defined as **Control account in detail**.

Security

You can secure this feature by implementing a range of controls against the affected programs. Although not all these controls are applicable to each feature, they include the following:

- You restrict operator access to *dimension codes* using the **Operator Maintenance** program.

Select the **Configure** hyperlink at the **DIMENSION ANALYSIS** section (within the **Security** tab) to maintain access control options using the **Dimension Analysis Security¹** program.

- You restrict operator access to *activities* within a program using the **Operator Maintenance** program.
- You can restrict operator access to the *fields* within a program (configured using the **Operator Maintenance** program).
- You can restrict operator access to *functions* within a program using passwords (configured using the **Password Definition** program).

When defined, the password must be entered before you can access the function.

¹Program: IMPFDS

- You can restrict access to the eSignature *transactions* within a program at operator, group, role or company level (configured using the **Electronic Signature Configuration Setup** program).

Electronic Signatures provide security access, transaction logging and event triggering that gives you greater control over your system changes.

- You can restrict operator access to *programs* by assigning them to groups and applying access control against the group (configured using the **Operator Groups** program).
- You can restrict operator access to *programs* by assigning them to roles and applying access control against the role (configured using the **Role Management** program).

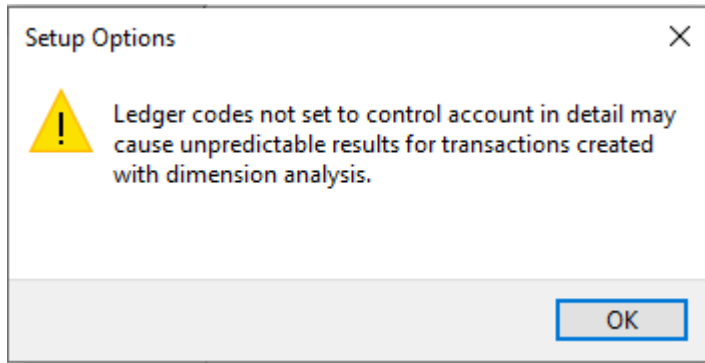
Restrictions and Limits

- We strongly recommend that you don't define your ledger account **Type** as **Template (General Ledger Codes)** when using the **Dimension Analysis** functionality.
- Tax-related transactions and their corresponding ledger accounts will not be tagged with dimensions. This applies to all modules where taxes are applied.

Solving

System messages

Setup Options - Ledger codes



Cause

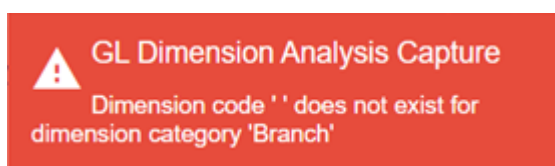
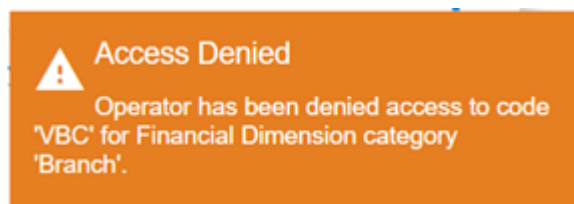
The **Dimension Analysis** feature has been enabled (i.e. the **DIMENSION ANALYSIS** setup option is defined as **GL entry level** or **Transaction entry level**) and configured with the **INTEGRATION LEVEL** defined as **Linked to GL in summary** or **Linked to GL in detail** (*Setup Options > General Ledger Integration > General Ledger Codes*).

Solution

We recommend that the **INTEGRATION LEVEL** of all ledger codes you want included in **Dimension Analysis** is defined as **Control account in detail**.

This is because transactions may not be tagged correctly if the **INTEGRATION LEVEL** is defined as **Linked to GL in summary** or **Linked to GL in detail**, which can then result in distorted data and inaccurate reports.

GL Dimension Analysis Capture



**GL Dimension Analysis Capture**

Dimension code 'NY' is not active.

Cause

One of these messages may be displayed when you attempt to save dimension detail in the **GL Dimension Analysis Capture¹** program if the system's validation fails.

You can't save selected dimension detail in the following scenarios:

- The operator doesn't have access to the selected dimension code.
- The selected dimension code doesn't exist or is currently in a state of **I - INACTIVE**.
- The dimension code is left blank and the posting rule against the ledger code is defined as **Mandatory**.

Solution

Depending on the cause for the failed validation, you can resolve this as follows:

- The operator doesn't have access to the selected dimension code.
Solution: Use the **Dimension Analysis Security²** program to define the required access type against the operator.
- The selected dimension code doesn't exist or is currently in a state of **I - INACTIVE**.
Solution: Use the **Dimension Code Maintenance** program to maintain the status of the dimension code.
- The dimension code is left blank and the posting rule against the ledger code is defined as **Mandatory**.
Solution: Use the **GL Default Dimension Maintenance** program to ensure that the correct dimension code and posting rules are defined against the ledger code.

¹Program: GENPDM

²Program: IMPFDS

FAQs

General

How will the selection at the Dimension analysis setup option affect dimension tagging?

The **DIMENSION ANALYSIS** setup option can be defined as **Transaction entry level** or **GL entry level**.

- If this is defined as **Transaction entry level**:

Transactions are tagged with dimensions when they are posted in the sub module.

This means that the **GL Dimension Analysis Capture¹** program is displayed when the transaction is processed in the transaction processing program.

- When this is defined at **GL entry level**:

Transactions will be tagged with dimensions when they are posted to the ledger.

This means that the **GL Dimension Analysis Capture²** program won't be displayed when the transaction is posted. Instead, a journal will be generated against the sub module. This journal will be placed **ON HOLD** until it is released and posted using the **GL Journal Entry** program.

When the journal is posted, the **GL Dimension Analysis Capture³** program is displayed so that the dimensions can be captured.

The option you choose typically depends on the employee that captures the dimension data and the volumes involved.

If the employee has sufficient financial knowledge, you may want to choose to capture dimension entries at **Transaction entry level**.

If the employee is not as knowledgeable regarding the company's financial structure and accounts, you may want to choose to capture dimension entries at **GL entry level**, so that a person in the Finance department can capture dimensions when the GL journal is posted.



The **GL entry level** option would be feasible for lower volumes.

¹Program: GENPDN

²Program: GENPDN

³Program: GENPDN

Why can't I save the dimension analysis detail?

You can't save the selected dimension detail within the **GL Dimension Analysis Capture**¹ program if any of the following apply:

- The operator doesn't have access to the selected dimension code.
Solution: Use the **Dimension Analysis Security**² program to define the required access type against the operator.
- The selected dimension code doesn't exist or is currently in a state of **I - INACTIVE**.
Solution: Use the **Dimension Code Maintenance** program to maintain the status of the dimension code.
- The dimension code is left blank and the posting rule against the ledger code is defined as **Mandatory**.
Solution: Use the **GL Default Dimension Maintenance** program to ensure that the correct dimension code and posting rules are defined against the ledger code.

Why do I need to assign priorities to master data in Dimension Analysis?

Priorities against master data are assigned to manage and resolve conflicts when a transaction could be tagged with more than one default dimension code.

Priorities are used to establish a hierarchy, which then determines which default dimension code takes precedence based on the prioritization of the source account or master data.

Working with dimension categories

How do I link a business process to a dimension category?

1. Access the **GL Dimension Source Maintenance** program (*Program List > General Ledger > Dimension Analysis > Setup*).
2. Select the dimension category that you want to link to a business process.
3. Within the **Dimension Source Details** pane, enable the **Business process required** field.
4. Within the **Business Processes** grid, select the business processes you want to link to the dimension category.
5. Save your changes.

¹Program: GENPDN

²Program: IMPFDS

Why aren't all the dimension categories available when posting a transaction?

Only dimension categories with an **A - ACTIVE** status can be selected.

You can change the status of a dimension category using the **GL Dimension Category Maintenance** program.



The dimension category will only be displayed if it is linked to the business process or if the selected ledger code has a mandatory posting rule.

If the selected ledger code has a not allowed posting rule defined against it, the category will not be displayed (even though it is linked to the business process).

Working with dimension codes

Why can't I select the dimension code I want to use?

This may be due to a number of reasons:

- Only dimension codes with an **A - ACTIVE** status can be selected.
Solution: Use the **Dimension Code Maintenance** program to maintain the dimension code's current status.
- Only the dimension codes for which the operator has access are displayed.
Solution: Use the **Dimension Analysis Security¹** program to define the required access type against the operator.
- You can only select dimension codes from the entity backed table (if the **Entity backed** field was enabled against the dimension category).
Solution: Use the **GL Dimension Category Maintenance** program to enable or disable the **Entity backed** field against a dimension category.



The dimension code can't be selected or updated if the dimension category is linked to a ledger code where the posting rule is defined as **Default**.

Why aren't all the dimension codes available when posting a transaction?

This may be due to one of the following:

- Only dimension codes with an **A - ACTIVE** status are displayed.
Solution: Use the **Dimension Code Maintenance** program to change the status of the dimension code.
- Only the dimension codes for which the operator has access are displayed.
Solution: Use the **Dimension Analysis Security²** program to define the required access type against the operator.

Why can't I select a posting rule for default dimension codes?

Posting rules are only available against ledger codes if you have selected the **GenMaster** table at the **Master table** field.

¹Program: IMPFDS

²Program: IMPFDS

How does the system determine the default dimension code?

The default dimension code is determined as follows:

- The system uses the default dimension code that was linked to the master data using the **GL Default Dimension Maintenance** program.
- If more than one default exists for a dimension category, the priority against the ledger code is taken into consideration (i.e. the default is selected from the entity with the highest priority).



Priorities can be assigned to a master data entity using the **GL Dimension Analysis Priorities** program.

- If no default was assigned to the master data entity with the highest priority, then the default assigned to the ledger code with the next highest priority is selected.

If no defaults are defined against a dimension category, then the category is still displayed, but the operator must capture the dimension code manually.

Can I update the dimension code on a transaction?

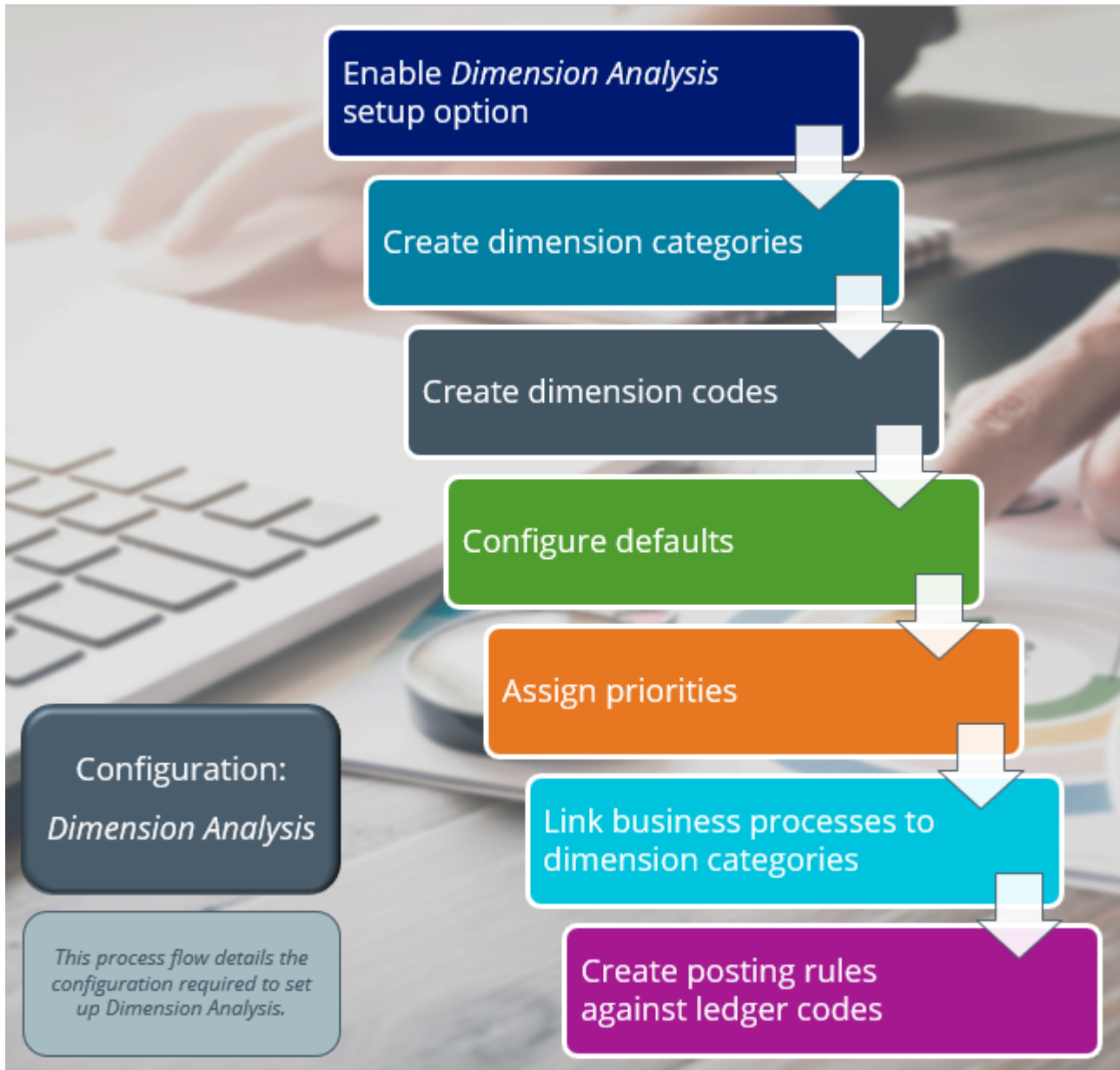
Yes.

Update the dimension code defined against an existing transaction as follows:

1. Open the **GL Dimension Code Update¹** program (*Program List > General Ledger > Dimension Analysis > Setup*).
2. Filter the transactions according to your requirements using the **Dimension Code Criteria**.
3. Update single transactions by entering or modifying the dimension code within the grid (i.e. **Dimension code** column).
4. Apply your changes to the dimension codes for all the transactions displayed in the grid using the **Update Codes** button.

¹Program: GENPUD

Using Process



Considerations:

- The dimension codes must be linked to dimension categories using the **Dimension Code Maintenance** program.
- You can configure default dimension codes against master data (customers, suppliers, etc) using the **GL Default Dimension Maintenance** program.

- If a transaction originates in a module that is configured for Dimension Analysis, the transaction will be automatically tagged with the default dimensions values defined against that ledger code.

- You can assign priorities to ledger codes to using the **GL Dimension Analysis Priorities** program.

Priority rules let you specify which default dimension code takes preference when more than one default is linked to a dimension category at master data level (the default assigned to the entity with the highest priority is then selected).

- You can define the applicable data source (or business process) where you want to apply a dimension category using the **GL Dimension Source Maintenance** program.



A business process can be linked to a maximum of 40 dimension categories, but only 10 categories are displayed within the **GL Dimension Analysis Capture¹** program.

- When you have assigned default dimension codes to ledger codes, you can define posting rules against ledger codes using the **GL Default Dimension Maintenance** program.



You can't assign posting rules to master data.

¹Program: GENPDN

Affected programs

The following indicates areas in the product that may be affected by implementing this feature:

Setup programs

Dimension Analysis Security

Accessible from the **Configure** option at the **DIMENSION ANALYSIS** section within the **Security** tab of the **Operator Maintenance** program.

This program lets you configure access control against operators to manage their access to dimension codes.

GL Dimension Category Maintenance

Program List > General Ledger > Dimension Analysis > Setup

This program lets you create and maintain reporting levels according to the unique requirements of your business.

Dimension Code Maintenance

Program List > General Ledger > Dimension Analysis > Setup

This program lets you create and maintain reporting levels according to the unique requirements of your business.

The reporting units (i.e. dimension codes) can then be linked to a dimension category.

We added the following columns at the **Dimension Code Maintenance** listview:

- The **Template** column allows you to define the dimension code as a template.
- The **Edit** hyperlink at the **Edit template split** column allows you to update the distributed template split for the selected template dimension code using the **Dimension Template Split¹** program.

GL Dimension Code Update

Program List > General Ledger > Dimension Analysis > Setup

This program lets you update the dimension codes defined against an existing transaction.

This is typically performed when the dimension code against a transaction is blank, or the transaction was tagged with an incorrect code.

This **Return blank dimension codes only** field displays the dimension categories in the listview against which no dimension codes were defined or captured.

The **Template** column with an **Edit** hyperlink in the **Distribution Template** listview allows you to define the dimension code as a template.

¹Program: GENPTS

Dimension Budgets Maintenance

Program List > General Ledger > Dimension Analysis > Setup

This program lets you maintain budget values against a dimension category and code combination per period.

Role Management

SYSPRO Ribbon bar > Setup

This program lets you maintain operator roles and configure settings and access to **Dimension Analysis** data for each role.

GL Dimension Analysis Priorities

Program List > General Ledger > Dimension Analysis > Setup

This program lets you define which master data takes preference when tagging transactions that are included within **Dimension Analysis**.

This is typically used when more than one default exists for a dimension category, in which case the priority determines which dimension code is used.

GL Default Dimension Maintenance

Program List > General Ledger > Dimension Analysis > Setup

This program lets you configure default dimension codes against master data.

You can also create posting rules for a dimension category, which will determine whether transactions with this ledger code will be included in the dimension.

GL Dimension Source Maintenance

Program List > General Ledger > Dimension Analysis > Setup

This program lets you link a dimension category to business processes.

Once this link is established and a transaction originates within the business process, the transaction is then tagged with dimension analysis.

Dimension Template Split

Program List > General Ledger > Dimension Analysis > Setup

This program lets you maintain the predefined split percentages for template dimension codes that are applied when distributing transaction values.

Dimension Template Distribution

Accessible from one of the following:

- From the **Update codes** icon in the **GL Dimension Analysis Capture¹** program.
- From the **Edit** hyperlink in the **GL Dimension Code Update²** program.

This program lets you maintain the split amount for the transaction line amount associated with the template dimension code.

When a dimension code is defined as a template, the transaction line value is automatically split according to the split percentage defined. However, users can edit and update the allocated amounts using the **Dimension Template Distribution³** program.

General Ledger Codes

Program List > General Ledger > Setup

When the **DIMENSION ANALYSIS** setup option is enabled for any sub module, a warning message is displayed within this program if the operator selects the **Detail transactions** or **Summary transactions** option against the **Sub-ledger integration method** field.

¹Program: GENPDN

²Program: GENPUD

³Program: GENPTD

Transaction Processing programs

GL Dimension Analysis Capture

This program can't be run standalone and is automatically displayed when posting or processing transactions from various programs listed below.

This program lets you review and update dimension codes for a transaction before it is posted or processed.

The **GL Dimension Analysis Capture¹** program is displayed when transactions are posted in the following programs, which then prompts the user to capture the dimension values:

- Accounts Receivable
 - AR Invoice Posting
 - AR Payments and Adjustments
 - AR Finance Charge Calculation
 - AR Exchange Rate Revaluation
 - AR Payments GL Integration
 - AR Payments Import
 - AR Payment Run
 - Customer-Supplier Contra
- Accounts Payable
 - AP Invoice Posting
 - AP Exchange Rate Revaluation
 - AP Permanent Entries Posting
 - AP Manual Check Entry
 - Payment Cycle Maintenance
 - Execute AP Payment Run
 - AP Execute Group Payment Run
 - AP Payments GL Integration
- Assets
 - Asset GL Integration
 - Asset Depreciation Calculation
 - Asset Depreciation Adjustment

¹Program: GENPDN

- □ Asset Depreciation Adjustment Recalc
- Asset Acquisition
- Asset Acquisition Import
- Asset Disposal
- Asset Count Confirm
- Asset Revaluation
- Assets in Suspense
- Asset Transfer
- Cash Book
 - Cash Book Deposits and Withdrawals
 - CB Permanent Entries Posting
 - Cash Book Currency Variance
- General Ledger
 - GL Journal Entry
 - GL Post Recurring Journals
 - GL Post Multiple Normal Journals
 - GL Posting Program
- Inventory Control
 - Inventory Movements
 - GIT Receipt with Apportionment
- Purchase Orders
 - GRN Adjustment
 - Purchase Order Receipts
 - Shipment Receipt
- Return Merchandise
 - End RMA Receipt
- Return to Supplier
 - RTS Maintenance
 - RTS Maintenance - Allow and Reject
- Trade Promotions

- □ Deduction Review
- □ Promotion Review
- □ Trade Promotions GL Integration
- Work in Progress
 - □ Job Closure
 - □ Part Billings
 - □ WIP Inspection Maintenance
 - □ WIP Inspection Variance Closure
 - □ Labor Posting
 - □ Job Issues
 - □ Job Receipts

The **GL Dimension Analysis Capture¹** program is also displayed when journal transactions are processed within the following integration programs:

- AR Invoice GL Integration
- AR Payments GL Integration
- Cash Book GL Integration
- GL Posting Program
- Inventory GL Integration
- WIP Labor GL Integration
- WIP Part Billings GL Integration



You can select the **Edit** hyperlink at the **Distribution template** field to select a different dimension template. If a default posting rule is displayed at the Defaults field, then the **Edit** hyperlink is unavailable.



We recommend that you define default dimension codes using the **GL Default Dimension Maintenance** program, so that the fields within the **GL Dimension Analysis Capture²** program are pre-populated with the default dimension values.

¹Program: GENPDN

²Program: GENPDN

Entity Dimension Analysis Capture

Accessible from the **Edit** hyperlink when posting or processing transactions from various programs listed below.

This program lets you edit dimension codes for a sales order, purchase order or dispatch note transaction before it is posted or processed.

The **Entity Dimension Analysis Capture¹** program is displayed when transactions are posted in the following programs, which then allows the user to edit the dimension values:

- Purchase Orders
 - Purchase Order Inspection
 - Purchase Order Entry
 - PO Creation
- Sales Orders
 - Sales Order Entry
 - Sales Order Entry Express
 - SO Counter Sales
 - Dispatch Note Maintenance

¹Program: GENPED

Report programs

GL List of Default Dimensions

Program List > General Ledger > Dimension Analysis > Reports

This report displays the default dimension codes and the ledger code to which they are linked.

GL Trial Balance for Dimensions

Program List > General Ledger > Reports

This report lists ledger account balances and detailed account activity. It can be generated per dimension code or category.

The **Return blank dimension codes only** field at the **Report Options** tab can be used to return all which transactions against which no dimension codes are defined.

The **Include dimension templates** option allows you to include the dimension code template and distribution split percentages in the report.

GL Dimension Budgets

Program List > General Ledger > Dimension Analysis > Reports

This program lets you generate a list of budget values per dimension category and ledger code.

Batch programs

GL Dimension Analysis Extract

Program List > General Ledger > Dimension Analysis

This program lets you extract the dimensions from the [GenDimensionDet](#) table to a separate extract table that is then used for reporting purposes and in the **GL Dimension Analysis Query¹** program.

This optimizes the query and reporting process in high-volume environments.

Various Batch programs

Transactions in the following programs are tagged with the dimension entry number using the default dimension codes.

- Document Print
- Stock Take Confirmation
- Consolidate Orders

The **GL Dimension Analysis Capture²** program won't be displayed when posting transactions, as the **GL DIMENSION ANALYSIS BUSINESS OBJECT³** business object is used to update the dimension analysis details.

¹Program: GENPDQ

²Program: GENPDN

³Business object: GENTDN

Query programs

GL Dimension Analysis Query

Program List > General Ledger > Dimension Analysis

This program lets you query the dimension details from the [GenDimensionDet](#) table. You must run the **GL Dimension Analysis Extract¹** program first to extract the dimension data before accessing this program.

You can select the **Show budgets** option in the **Dimension Analysis Criteria** pane to view budget values against the dimension codes and the ledger totals. Budget values are displayed in the **Dimension by budgets** pane and can only be displayed for one dimension category. This enables you to compare actual to budgeted values per ledger code and period.

GL Query

Program List > General Ledger > GL Query

You can view the Dimension Analysis entries against a transaction within the **Analysis** listview.

The **Dimension entry** field can be inserted at the **Details** listview using the **Field Chooser** option. Select the transaction to view the dimension entry detail at the **Dimension Analysis Details** pane.

You can also view the dimension data using the **GL Zoom on General Ledger Journal** program by selecting the **General Ledger Journal** option from the **Edit** icon in the **SYSPRO Web UI (Avanti)** version, or by selecting the dimension entry hyperlink in the **SYSPRO Desktop** version.

The dimension entry detail is displayed at the **Dimension Analysis Details** pane.

You can view the budget values per dimension and period in the **Dimension balances** and **Dimension movements** listviews and you can select the amounts and drill down on balances to view the budget amounts per dimension category and code.

Bank Query

Program List > Cash Book

The **Dimension entry** field can be inserted at the **Transaction** listview using the **Field Chooser** option. Select the transaction to view the dimension entry detail at the **Transaction Selection** pane.

Select the dimension entry hyperlink to display the **Cash Book GL Distribution Zoom** program.

You can view the dimension data at the **Dimension Analysis Details** pane.

¹Program: GENPEX

Supplier Query

Program List > Accounts Payable

You can view the Dimension Analysis details of an invoice by selecting the **Invoice** option from the **Query** menu, which displays the **AP Supplier Invoices** program. Right-click on the invoice and select the **GL distribution** option. From here, the dimension data can be viewed on the **Dimension Analysis Details** pane.

You can also insert the **Dimension entry** field at the **Invoices** listview by using the **Field Chooser** option. Select the dimension entry hyperlink to display the **AP Supplier Invoice Distribution** program to view dimension codes tagged against invoice transactions.

Purchase Order Query

Program List > Purchase Orders

The **Dimension Analysis** option in the **Query** menu launches the **GL Dimension Analysis Query¹** program that enables you to view tagged dimension codes per purchase order line.

Sales Order Query

Program List > Sales Orders

The **Dimension Query** option in the **Query** menu launches the **GL Dimensions Query²** program that enables you to view tagged dimension codes per purchase order line.

GL Dimensions Query

*Accessible from the **Dimension Query** option in the **Query** menu of the **Sales Order Query** program.*

This program lets you query dimension analysis details on sales orders.

¹Program: GENPDQ

²Program: GENPEQ

Zoom programs

The following programs can be used to view dimension analysis data at transaction level.

- GL Zoom on General Ledger Journal
- GL Zoom on Cash Book Journals
- Cash Book GL Distribution Zoom

Import programs

Dimension Budgets Import

Program List > General Ledger > Dimension Analysis > Setup

This program lets you import and capture dimension budgets against ledger codes.

Transactions that are imported using the following programs are tagged with the dimension entry number using the default dimension codes.

- Stock Take Import
- WIP Labor Import
- Import GRN Details
- Purchase Order Receipt Import
- AR Payments Import
- GL Entries Import

The **GL Dimension Analysis Capture**¹ program won't be displayed when posting transactions, as the **GL DIMENSION ANALYSIS BUSINESS OBJECT**² business object is used to update the dimension analysis details.

¹Program: GENPDN

²Business object: GENTDN

Affected business objects

The following indicates the business objects affected by this feature:

Setup objects

GL Dimension Analysis Priorities

The **GL DIMENSION ANALYSIS PRIORITIES**¹ business object lets you configure and maintain your priorities for the **Dimension Analysis** capability.

GL Dimension Codes

The **GL DIMENSION CODES**² business object lets you create dimension codes.

GL Dimension Categories

The **GL DIMENSION CATEGORIES**³ business object lets you create dimension categories.

Each dimension category can have an unlimited number of dimension codes. Categories that are active and fall within the date range are included in the analysis.

Dimension categories can be entity-backed (linked to existing system data such as branch, area, salesperson, etc.) or custom (predefined by the user).

GL Default Dimensions

The **GL DEFAULT DIMENSIONS**⁴ business object lets you create default dimension codes for ledger accounts.

GL Dimension Source

The **GL DIMENSION SOURCE**⁵ business object lets you to link dimension categories to business processes.

General Ledger Code Maintenance

The **GENERAL LEDGER CODE MAINTENANCE**⁶ business object lets you add, maintain and delete General Ledger codes.

Dimension Budgets Business Object

The **DIMENSION BUDGETS BUSINESS OBJECT**⁷ business object lets you capture multiple budget types for one or more dimension category and codes.

¹Business object: GL Dimension Analysis Priorities

²Business object: GENSCD

³Business object: GENSCT

⁴Business object: GENSDF

⁵Business object: GENSSR

⁶Business object: GENSCO

⁷Business object: GENSB

GL Dimension Template Split

The **GL DIMENSION TEMPLATE SPLIT**¹ business object lets you maintain the distribution splits for dimension templates.

¹Business object: GENSTS

Transaction objects

Accounts Payable Invoice Posting

The **ACCOUNTS PAYABLE INVOICE POSTING**¹ business object lets you capture invoices, debit notes, credit notes and adjustments against a supplier. The value of the transaction is distributed to ledger codes in the local or in the supplier currency.

The **Purchase Price Variance** ledger code (that is used to distribute the variance between a goods received note and a supplier invoice) can be changed when posting an invoice.

AP Invoice GL Integration

The **AP INVOICE GL INTEGRATION**² business object lets you create and optionally post ledger journals for Accounts Payable invoice transactions, when the **INTEGRATION LEVEL** is defined as in **Linked to GL in summary** or **Linked to GL in detail**.

AP Payment GL Integration

The **AP PAYMENT GL INTEGRATION**³ business object lets you create and optionally post General Ledger journals for Accounts Payable payment transactions, when Accounts Payable is integrated to General Ledger in detail.

AP Execute Payment

The **AP EXECUTE PAYMENT**⁴ business object lets you execute a payment run as part of SYSPRO's fully-automated supplier payment process. This allows customers to tailor their supplier pay run processing using third party applications and to better manage the approval and execution of big payment runs.



This business object caters for group payments but doesn't accommodate intercompany group payment runs.

AP Manual Check Payments

The **AP MANUAL CHECK PAYMENTS**⁵ business object lets you process any checks that were written manually to pay supplier invoices.

¹Business object: APSTIN

²Business object: APSTGI

³Business object: APSTGP

⁴Business object: APSTPD

⁵Business object: APSTPM

AP Payment Cycle Maintenance

The **AP PAYMENT CYCLE MAINTENANCE**¹ business object lets you create and maintain payment runs when processing payments to your suppliers.

AR Invoice Posting

The **AR INVOICE POSTING**² business object lets you capture invoices, debit notes and credit notes against a customer.

AR Invoice Integration update

The **AR INVOICE INTEGRATION UPDATE**³ business object lets you create and optionally post ledger journals for Accounts Receivable invoice transactions, when the **INTEGRATION LEVEL** is defined as in **Linked to GL in summary** or **Linked to GL in detail**.

AR Payment Integration update

The **AR PAYMENT INTEGRATION UPDATE**⁴ business object lets you create and optionally post ledger journals for Accounts Receivable payment transactions, when the **INTEGRATION LEVEL** is defined as in **Linked to GL in summary** or **Linked to GL in detail**.

AR Payments and Adjustments

The **AR PAYMENTS AND ADJUSTMENTS**⁵ business object is used to post payments and adjustments against **Accounts Receivable** invoices for SYSPRO customers and to post miscellaneous receipts (not linked to a specific customer or invoice).

AR Group Payment Run Post BO

The **AR GROUP PAYMENT RUN POST BO**⁶ business object lets you post the transactions associated with **AR Group Payments**.

Asset Transfer

The **ASSET TRANSFER**⁷ business object lets you transfer an asset from one branch, cost center and group to another.

¹Business object: APSTPY

²Business object: ARSTIN

³Business object: ARSTGI

⁴Business object: ARSTGP

⁵Business object: ARSTPY

⁶Business object: ARSTGR

⁷Business object: ASSTTF

Cash Book GL Integration Update

The **CASH BOOK GL INTEGRATION UPDATE**¹ business object lets you create and optionally post ledger journals for Cash Book transactions, when the **INTEGRATION LEVEL** is defined as in **Linked to GL in summary** or **Linked to GL in detail**.

CSH Deposits and Withdrawals

The **CSH DEPOSITS AND WITHDRAWALS**² business object lets you enter details of deposits and withdrawals, change existing transactions, reconcile or unreconcile transactions, and process inter-bank transfers in Cash Book. It can also be used to process foreign currency transactions through either a local or foreign bank account.

GL Dimension Analysis Business Object

The **GL DIMENSION ANALYSIS BUSINESS OBJECT**³ business object receives master data, reads default dimension analysis data. It then assigns dimension categories and codes and posts the transactions.

GL Journal Posting

The **GL JOURNAL POSTING**⁴ business object lets you create, maintain and post the different types of ledger journals and is also used to post sub-ledger transactions to the General Ledger.

Inventory Movements (Backflushing)

The **INVENTORY MOVEMENTS (BACKFLUSHING)**⁵ business object lets you record the manufacture of items without using a Work in Progress job. This enables the issuing of materials from inventory, applying standard labor costs, and receipting the finished good back into stock, all in one process.

Cycle Count Maintenance

The **CYCLE COUNT MAINTENANCE**⁶ business object lets you add, change and delete a cycle count.

Inventory GRN GL Integration Update

The **INVENTORY GRN GL INTEGRATION UPDATE**⁷ business object lets you create and optionally post ledger journals for GRN adjustment transactions, when the **INTEGRATION LEVEL** is defined as in **Linked to GL in summary** or **Linked to GL in detail**.

¹Business object: CSHTGI

²Business object: CSHTWD

³Business object: GENTDN

⁴Business object: GENTJL

⁵Business object: INVTBF

⁶Business object: INVTC2

⁷Business object: INVTGG

Inventory Integration Update

The **INVENTORY INTEGRATION UPDATE**¹ business object lets you create and optionally post ledger journals for inventory transactions, when the **INTEGRATION LEVEL** is defined as in **Linked to GL in summary** or **Linked to GL in detail**.

Inventory Cycle Count Capture

The **INVENTORY CYCLE COUNT CAPTURE**² business object lets you capture the items for the selected cycle count.

- Items without lots and serials are captured in the [InvCycleCountBin](#) and [InvCycleCountCapt](#) tables.
- Items with serials are captured in the [InvCycleCountBin](#), [InvCycleCountSer](#) and [InvCycleCountCapt](#) tables.
- Items with serials and lots are captured in the [InvCycleCountBin](#), [InvCycleCountSerInvCycleCountSer](#) and [InvCycleCountCapt](#) tables.
- Items with lots are captured in the [InvCycleCountBin](#), [InvCycleCountLot](#) and [InvCycleCountCapt](#) tables.

Inventory Movements (Adjust/Physical)

The **INVENTORY MOVEMENTS (ADJUST/PHYSICAL)**³ business object lets you capture an inventory adjustment or physical count transaction, which updates the on-hand quantity of a stock item.

Inventory Movements (Bin Transfers)

The **INVENTORY MOVEMENTS (BIN TRANSFERS)**⁴ business object lets you capture a bin transfer transaction, which records the transfer of items from one bin location to another. This transaction type is only available if the **MULTIPLE BINS** setup option is enabled.

Inventory Movements (Cost Changes)

The **INVENTORY MOVEMENTS (COST CHANGES)**⁵ business object lets you capture a cost change transaction, which updates the unit cost of a stock item in a specific warehouse.

Inventory Movements (Expense Issues)

The **INVENTORY MOVEMENTS (EXPENSE ISSUES)**⁶ business object lets you capture an expense issue transaction, which records the miscellaneous issue of stock from inventory.

¹Business object: INVTGM

²Business object: INVTCR

³Business object: INVTMA

⁴Business object: INVTMB

⁵Business object: INVTMC

⁶Business object: INVTME

The quantity on hand is reduced by the quantity issued and the transaction is valued at the current inventory cost. Entering a negative quantity can reverse any quantity issued in error.

Inventory Movements (WH Xfers IN)

The **INVENTORY MOVEMENTS (WH XFERS IN)**¹ business object lets you receive items in transit into the destination warehouse.

This is typically required when performing a non-immediate transfer of stock from one warehouse to another and items remain in transit until the transfer is recorded into the destination warehouse.

Inventory Movements (Cost Modifications)

The **INVENTORY MOVEMENTS (COST MODIFICATIONS)**² business object lets you capture a cost modification transaction, which adjusts the unit cost of a specific quantity of items.

This is typically done when a number of items were received into stock at the incorrect cost.

This transaction type can't be processed if the **COSTING METHOD** setup option is defined as **Standard** or the **FIFO VALUATION** setup option is enabled.

Inventory Movements (GIT Wh XFers IN)

The **INVENTORY MOVEMENTS (GIT WH XFERS IN)**³ business object lets you monitor warehouse and supply chain transfers and provides better control over stock items that are transferred between warehouses.

Inventory Movements (WH Xfers OUT/IMM)

The **INVENTORY MOVEMENTS (WH XFERS OUT/IMM)**⁴ business object lets you record the transfer of items from one warehouse to another and supports the following three functions:

- **Out**

Stock is transferred out of the source warehouse.

These items remain in transit until a transfer in is recorded into a destination warehouse.



If the **FULL GOODS IN TRANSIT TRANSFERS FACILITY** setup option is enabled, this function is unavailable. You should use the **INVENTORY MOVEMENTS (GIT WH XFERS OUT)**⁵ business object instead.

¹Business object: INVTMI

²Business object: INVTMM

³Business object: INVTMN

⁴Business object: INVTMO

⁵Business object: INVTMT

- **Out (no destination)**

Stock is transferred out of the source warehouse and no destination warehouse is specified.

- **Immediate**

Stock is transferred out of the source warehouse and received into the destination warehouse in a single transaction.

This option would be used when the transportation time between the warehouses is short, the transfer has already been completed or the destination warehouse does not have the facility to record the receipt of the transfer.

Inventory Movements (Receipts)

The **INVENTORY MOVEMENTS (RECEIPTS)**¹ business object lets you receipt items into stock that are not associated with one of the following:

- Purchase order
- Job
- Landed cost tracking shipment
- Backflushing entry

Inventory Movements (GIT WH Xfers OUT)

The **INVENTORY MOVEMENTS (GIT WH XFERS OUT)**² business object lets you transfer items from one warehouse to another when using the Goods in Transit module (i.e. the **FULL GOODS IN TRANSIT TRANSFERS FACILITY** setup option is enabled).

Inventory Stock Take Confirmation

The **INVENTORY STOCK TAKE CONFIRMATION**³ business object lets you confirm details of the stock take capture process and updates the inventory tables with the captured quantities.

GRN Post GRN Adjustments

The **GRN POST GRN ADJUSTMENTS**⁴ business object lets you add a Goods received note (GRN), adjust the value of an existing GRN, set the status of a matched GRN to unmatched and change the supplier details against a GRN.

¹Business object: INVTMR

²Business object: INVTMT

³Business object: INVTSU

⁴Business object: PORTGN

GRN Post GRN details

The **GRN POST GRN DETAILS**¹ business object lets you add GRNs for stocked items, non-stocked items or for non-merchandise costs.

PO Purchase Order Receipts

The **PO PURCHASE ORDER RECEIPTS**² business object lets you process positive receipts against purchase orders. Items can be receipted into stock or into inspection, if they have been defined as requiring inspection or they are lot traceable items. Non-stocked lines can optionally be receipted into inspection.

RMA Line Receipt

The **RMA LINE RECEIPT**³ business object lets you process receipts on RMA lines.

RTS Accept/Reject business object

The **RTS ACCEPT/REJECT BUSINESS OBJECT**⁴ business object lets you accept or reject the RTS transaction.

RTS creation/change business object

The **RTS CREATION/CHANGE BUSINESS OBJECT**⁵ business object lets you add and maintain RTS's.

RTS GL Update Utility program

The **RTS GL UPDATE UTILITY PROGRAM**⁶ business object is used when running the conversion from RTV to RTS.

It forces the transaction values (made when creating the various RTS entries) through to GL. The journal created from these transactions is stored in the [GenJournalDetail](#) table.

SO Consolidate Dispatch Invoice Calculation

The **SO CONSOLIDATE DISPATCH INVOICE CALCULATION**⁷ business object lets you post invoices against consolidated dispatch notes.

The **Dispatch Note Consolidation** program creates the consolidation records against the invoice. When the invoice is posted, all required transactions and calculations are processed and saved to the SYSPRO database.

¹Business object: PORTGR

²Business object: PORTOR

³Business object: RMATRR

⁴Business object: RTSTAR

⁵Business object: RTSTOI

⁶Business object: RTSUGL

⁷Business object: SORTCC

A copy of the invoice information is stored and can be printed/reprinted using the **SO CONSOLIDATED DISPATCH INV DOC QUERY**¹ business object or the **Document Print** program.

SO Invoice Calculation from Sales Order

The **SO INVOICE CALCULATION FROM SALES ORDER**² business object lets you capture the quantity counted into inspection.

Items are receipted into inspection (using the business object **PO PURCHASE ORDER RECEIPTS**³) if the **LOT TRACEABILITY** option against the stock code is defined as **Traceable** or **Inspection required**.

Non-stocked lines can optionally be receipted into inspection.

SO Dispatch Invoice Calculation

The **SO DISPATCH INVOICE CALCULATION**⁴ business object lets you invoice the dispatch notes that are created using the **SO DISPATCH NOTE MAINTENANCE**⁵ business object or the **Dispatch Note Review** program.

TPM GL Integration

The **TPM GL INTEGRATION**⁶ business object lets you create and optionally post General Ledger journals for trade promotions transactions, when Accounts Receivable is integrated to General Ledger in detail or summary.

WIP Inspection Accept into Stock

The **WIP INSPECTION ACCEPT INTO STOCK**⁷ business object lets you accept a quantity of a job's finished stock code into stock after completing an inspection.



This is a two-stage receipt facility for job receipts and is only available if the **LOT TRACEABILITY** option for the stocked item is defined as **Inspection required** (*Program List > Inventory > Setup*).

A ledger entry is made for the transaction if Work in Progress module is integrated to the General Ledger.

¹Business object: SORQCD

²Business object: SORTIC

³Business object: PORTOR

⁴Business object: SORTNC

⁵Business object: SORTDM

⁶Business object: TPMTGI

⁷Business object: WIPTAI

GL Dimension Code Update Posting

The **GL DIMENSION CODE UPDATE POSTING**¹ business object lets you update dimension codes for a specific dimension entry number or category item. Other information that you can specify includes the ledger code, ledger year, journal number and ledger code according to which you want to update the dimension codes.

GL Dimension Analysis Extract

The **GL DIMENSION ANALYSIS EXTRACT**² business object lets you extract results from the **Dimension Analysis** feature.

WIP Labor GL Integration business object

The **WIP LABOR GL INTEGRATION BUSINESS OBJECT**³ business object lets you create and optionally post ledger journals for WIP labor transactions, when the Work in Progress **INTEGRATION LEVEL** to the General Ledger is defined as in **Linked to GL in summary** or **Linked to GL in detail**.

WIP Part Billing GL Integration

The **WIP PART BILLING GL INTEGRATION**⁴ business object lets you create and post ledger journals for WIP part billing transactions, when the Work in Progress **INTEGRATION LEVEL** to the General Ledger is defined as in **Linked to GL in summary** or **Linked to GL in detail**.

WIP Job Closure

The **WIP JOB CLOSURE**⁵ business object lets you set a job to complete and distribute any outstanding work in progress amounts to the General Ledger.

WIP Labor Posting

The **WIP LABOR POSTING**⁶ business object lets you post labor hours against a job or record non-productive time without updating a job.

WIP Part Billings

The **WIP PART BILLINGS**⁷ business object lets you invoice a customer based on work completed for a non-stocked job. At the same time, the work in progress value is reduced and may be distributed to selected ledger codes.

¹Business object: GENTUD

²Business object: GENTEX

³Business object: WIPTGI

⁴Business object: WIPTGM

⁵Business object: WIPTJC

⁶Business object: WIPTLP

⁷Business object: WIPTPB

WIP Inspection Rework

The **WIP INSPECTION REWORK**¹ business object lets you send a specified quantity of the inspected item for rework. This can be sent back to the original job, if it still exists, or to a new job (which is then created automatically).

WIP Inspection Scrap Maintenance

The **WIP INSPECTION SCRAP MAINTENANCE**² business object lets you scrap a quantity for a WIP inspection reference together with a reason for scrapping.

A ledger entry is made for the transaction the Work in Progress module is integrated to the General Ledger.

Entity Dimension Analysis Capture

The **ENTITY DIMENSION ANALYSIS CAPTURE**³ business object lets you to capture a new dimension entity dataset for sales orders, purchase orders and dispatch notes.

SO Sales Order Import

The **SO SALES ORDER IMPORT**⁴ business object lets you add a new sales order and change or cancel an existing sales order.

Multiple orders can be passed to this object with any combination of the add, cancel and change requests. The input for each order is made up of header information and individual detail lines.

Sales Order Import Validation

The **SALES ORDER IMPORT VALIDATION**⁵ business object lets you validate sales order imports.

¹Business object: WIPRI

²Business object: WIPTSI

³Business object: GENTED

⁴Business object: SORTOI

⁵Business object: SORTOV

Query objects

GL Dimension Codes Query

The **GL DIMENSION CODES QUERY**¹ business object lets you query dimension code data per transaction and can be used to view default and blank dimension codes.

GL Dimension Categories Query

The **GL DIMENSION CATEGORIES QUERY**² business object lets you query dimension categories in the [GenDimensionCat](#) table.

GL Default Dimensions Query

The **GL DEFAULT DIMENSIONS QUERY**³ business object lets you query default dimension codes that are linked to ledger accounts.

Query GL Integration Options

The **QUERY GL INTEGRATION OPTIONS**⁴ business object lets you view the General Ledger integration settings.

AP Supplier Query

The **AP SUPPLIER QUERY**⁵ business object lets you view supplier information.

Cash Book Transaction Query

The **CASH BOOK TRANSACTION QUERY**⁶ business object lets you view the balance and transaction details for a specific bank.

GL Trial Balance

The **GL TRIAL BALANCE**⁷ business object lets you create the **GL Trial Balance** report.

GL Journal Zoom

The **GL JOURNAL ZOOM**⁸ business object lets you view ledger - and sub-ledger transactions for a specific journal. It returns all transactions that make up the selected journal and original transaction details from the sub-ledger.

¹Business object: GENQCD

²Business object: GENQCT

³Business object: GENQDF

⁴Business object: GENQSI

⁵Business object: APSQRY

⁶Business object: CSHQRY

⁷Business object: GENQ20

⁸Business object: GENQZM

GL General Ledger Query

The **GL GENERAL LEDGER QUERY**¹ business object returns information about a specific general ledger code, including:

- Static information
- Balances at period end
- Budget information
- Detail transaction

GL Dimension Analysis Query

The **GL DIMENSION ANALYSIS QUERY**² business object lets you query information relating to **Dimension Analysis** capability. The information that you can query includes dimension categories, dimension codes, credit amounts, debit amounts, etc. Additionally, you can filter according to assets, liabilities, revenue, capital, assets, expenses, ledger codes, ledger period and the ledger year.

Dimension Budgets Query

The **DIMENSION BUDGETS QUERY**³ business object lets you query budget values per dimension category and code.

Purchase Order Query

The **PURCHASE ORDER QUERY**⁴ business object lets you query purchase orders and returns purchase order header and detail line information.

¹Business object: GENQRY

²Business object: GENQDQ

³Business object: GENQ07

⁴Business object: PORQRY



www.syspro.com

Copyright © SYSPRO. All rights reserved.
All brand and product names are trademarks or
registered trademarks of their respective holders.