

Microsoft Edge WebView2 Browser Control

SYSPRO 8

Published: January 2023



CONTENTS

Microsoft Edge WebView2 Browser Control

Overview	1
Deployment	1
Where Used	2
FAQs	4



Microsoft Edge WebView2 Browser Control

This article provides details regarding the **Microsoft Edge WebView2** Control capabilities available within the **SYSPRO Desktop** from **SYSPRO 8 2022**.

Overview

The **SYSPRO Desktop** client web browser capabilities have been enhanced to utilize the latest **Microsoft Edge WebView2** control technologies, allowing for rich and secure web browser experiences within SYSPRO.

This provides a more responsive browser experience and improves the compatibility between third-party web-based solutions and SYSPRO.

Deployment

The following indicates how to deploy the **Microsoft Edge WebView2** control for use in the **SYSPRO Desktop** client:

New installs

- Any new installs of **SYSPRO 8 2022** will automatically include the **Microsoft Edge WebView2** runtime, as it is part of the SYSPRO client install.

Updating from a prior release

- As **Microsoft** have begun rolling out the **Microsoft Edge WebView2** Runtime to **Microsoft Windows 10** and **Microsoft Windows 11** users, you may already have it installed.



You can verify if you have this installed by checking the **Apps and Features** program within **Windows**.

- Alternatively, you can download the runtime from the following link:

<https://developer.microsoft.com/en-us/microsoft-edge/webview2/>

When downloading the runtime, select either the **Evergreen Bootstrapper** download button, or the **X64** button beneath the **Evergreen Standalone Installer** option.

Do *not* install the Fixed Version.



Where Used

Microsoft Edge

From **SYSPRO 8 2022**, the following features use **Microsoft Edge** exclusively:

- Embedded Analytics
- Visual Designer (web views)
- SYSPRO Main Menu (browser control)
- SYSPRO Web Views and Cards

Internet Explorer

Over time, other features within SYSPRO may be re-engineered to make use of **Microsoft Edge**. Currently, the following areas still use **Internet Explorer** when calling the browser:

- Accounts Receivable:
 - Customer Query (ARSPEN)
 - Contact Management Query (CMSPEN)
 - Account Query (CMSPQA)
- Administration:
 - Browser Queries and Themes (IMPSTY)
 - e.net Browse Setup (IMPUBR)
 - Syspro Browser (IMPURL)
- Custom Panes (web browser)
- General Ledger:
 - GL Define Financial Reports (GENP70)
 - GL XML Report Viewer (GENP81)
- Report Writer:
 - Create Report (REPP75)
 - Recent Reports (REPP76)
 - RW XML Report Viewer (REPP81)
 - RW XML Wizard (REPPZ3)
- Sales Analysis:
 - Lost Sales Import (SALPLI)
- Sales Orders:



- □ Sales Order Query (SORPEN)
- SYSPRO Help (when launched from within SYSPRO via the **F1** keyboard shortcut):
 - SYSPRO Help (IMPHL2)



FAQs

What platforms support Microsoft Edge WebView2?

The following systems support **Microsoft Edge WebView2**:

- Windows 11
- Windows 10
- Windows 10 IoT Enterprise LTSC x32 2019
- Windows 10 IoT Enterprise LTSC x64 2019
- Windows 10 IoT Enterprise 21h1 x64
- Windows 8.1
- Windows 7 **
- Windows Server 2022
- Windows Server 2019
- Windows Server 2016
- Windows Server 2012
- Windows Server 2012 R2
- Windows Server 2008 R2 **

**WebView2 support for Windows 7 and Windows Server 2008 R2 have the same support timeline as Microsoft Edge.



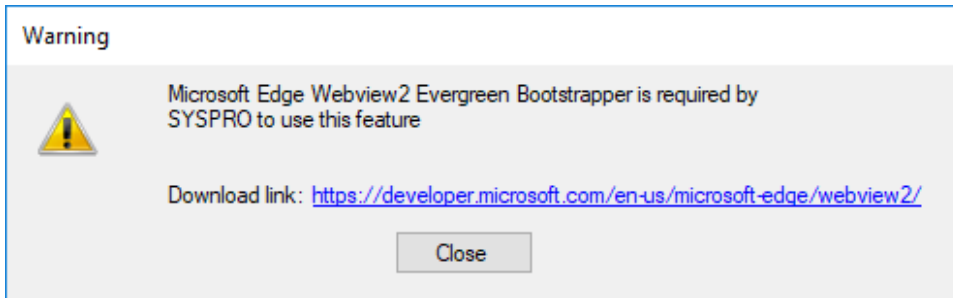
For more information, see <https://learn.microsoft.com/en-us/microsoft-edge/webview2/>.



What happens if I don't have Microsoft Edge WebView2 installed?

If the **Microsoft Edge WebView2** control is not installed when you access one of the features that use **Microsoft Edge** exclusively from **SYSPRO 8 2022**:

- A system message is displayed indicating as such and provides a download link for the control:



- Most of SYSPRO will simply revert to using **Internet Explorer**. However, you may experience problems when accessing one of the features that use **Microsoft Edge** exclusively.

View the **Deployment** section of this article for details on how to install the **Edge WebView2** Runtime.



www.syspro.com

Copyright © SYSPRO. All rights reserved.
All brand and product names are trademarks or
registered trademarks of their respective holders.