

EFT NACHA Conversion

SYSPRO 8

Reference Guide

Published: June 2024



CONTENTS

EFT NACHA Conversion

Exploring	1
Starting	2
Solving	4
Using	5

EFT NACHA Conversion

Exploring

Where it fits in?

The **EFT NACHA Conversion** capability lets you create a specific payment file format that is required by the National Automated Clearing House Association (NACHA) to execute a mass payment batch.

Benefits

- Streamlined, seamless transaction experience
- Enhanced operational efficiency and accuracy
- Reduced likelihood of payment errors and delays

Functionality

The **EFT NACHA Conversion** transforms the EFT payment XML file into a unique format required by NACHA (for the USA) and CPA (for Canada) and includes extra fields to facilitate automated execution of domestic ACH payments through the NACHA network.

Navigation

The programs related to this feature are accessed from the **Program List** of the SYSPRO menu:

- *Program List > Electronic Funds Transfer*

Terminology

NACHA and CPA

NACHA, originally the National Automated Clearinghouse Association, manages the ACH Network, which is the backbone for the electronic movement of money and data in the United States, and is an association for the payments industry.

CPA stands for Canadian Payments Association (also called Payments Canada), which is an organization that operates a payment clearing and settlement system in Canada.

Starting

Prerequisites

To use this feature, the following setup option(s) must be enabled:

Banks

Program List > Accounts Payable > Setup

- EFT payments required



This must be enabled against each bank for which the NACHA or CPA payment files are generated.

Suppliers

Program List > Accounts Payable > Setup

- EFT payments required



This must be enabled against each supplier for which the NACHA or CPA payment files are generated.

Licensing

To use this feature, the following module(s) must be installed according to the terms of your software license agreement:

- **Electronic Funds Interface**
- **Electronic Funds Transfer**

Security

You can secure this feature by implementing a range of controls against the affected programs. Although not all these controls are applicable to each feature, they include the following:

- You restrict operator access to *activities* within a program using the **Operator Maintenance** program.
- You can restrict operator access to the *fields* within a program (configured using the **Operator Maintenance** program).
- You can restrict operator access to *functions* within a program using passwords (configured using the **Password Definition** program). When defined, the password must be entered before you can access the function.

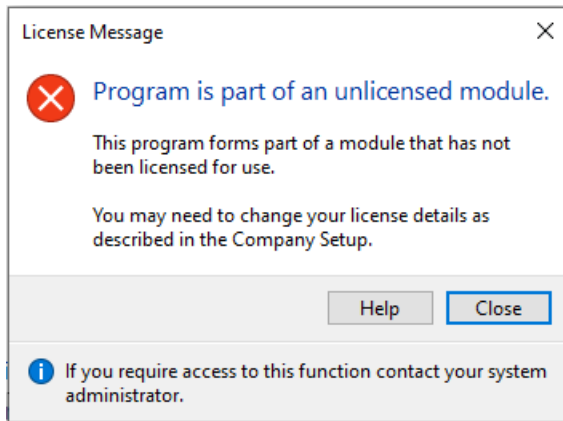
- You can restrict access to the eSignature *transactions* within a program at operator, group, role or company level (configured using the **Electronic Signature Configuration Setup** program). Electronic Signatures provide security access, transaction logging and event triggering that gives you greater control over your system changes.
- You can restrict operator access to *programs* by assigning them to groups and applying access control against the group (configured using the **Operator Groups** program).
- You can restrict operator access to *programs* by assigning them to roles and applying access control against the role (configured using the **Role Management** program).

Solving

System messages

Error messages

License Message



Cause

This message is displayed when you have attempted to access the **EFT File Format Maintenance¹** program, but your system is not configured to use the **Electronic Funds Interface** module.

Solution

Ensure that your license agreement allows you access to the **Electronic Funds Interface** module.

¹Program: EFTPF

Using

Affected programs

The following indicates areas in the product that may be affected by implementing this feature:

Setup programs

EFT File Format Maintenance

Program List > Electronic Fund Transfer > Setup

This program lets you design the format for an EFT payment file according to the specification of the financial institution. This information is stored in the [EftPayFormat](#) and [EftPayFormatDet](#) tables.

The program maps fields to the XML elements created by the **EFT Payments Extract** and **EFT Payments Re-extract** programs, which can include custom form fields from the [EftBankCtl](#), [EftApSupplier](#) and [EftCshSupplier](#) tables.

EFT Bank Control

Program List > Electronic Fund Transfer > Setup

This program lets you capture and maintain details of EFT control information required within the system.

We added the **Payment format information** section that lets you select the format, location and path to the XML payment file. Depending on your selections, either the **NACHA Details** or **CPA Details** form is displayed, where you can enter the payment data that is then saved in the [EftBankCtl](#) and [EftBankExtra](#) tables.



The fields at the **Payment format information** section become available once the **Output EFT payments to XML format** option is enabled.

EFT Cash Book Beneficiaries

Program List > Electronic Fund Transfer > Setup

This program lets you maintain details of beneficiaries you want to pay from the **Cash Book** module, using the **Electronic Funds Transfer** module.

We added the **Transaction code** and **Routing + ABA + Check Digit** fields.



These fields are only displayed when:

- **NACHA** is selected at the **Format type** field of the EFT bank against the beneficiary (**EFT Bank Control**).
- The **Electronic Funds Interface** license is installed.

Suppliers

Program List > Accounts Payable > Setup

You use this program to capture and maintain details of suppliers required within the system.

We added the **NACHA details** and **Canadian EFT details** sections within the **General Details** pane to define the NACHA/CPA details against the supplier that are used when creating the payment XML file.



- The **EFT PAYMENTS REQUIRED** field must be enabled against the supplier.
- You can add the **NACHA details** and **Canadian EFT details** sections by using the **Show Captions** function that is available from the context-sensitive menu in the **General Details** pane.
- These fields are only displayed if the **Electronic Funds Interface** license is installed.

Transaction Processing programs

EFT Payments Re-extract

Program List > Electronic Fund Transfer > Transaction Processing

You use this program to re-extract a batch of payments which were previously extracted using the **EFT Payments Extract** program.

We have modified this program for NACHA/Canadian EFT payments to use the XML elements stored in the [EftBankCtl](#), [EftApSupplier](#) and [EftCshSupplier](#) tables to map data during the payment format conversion process.

EFT Payments Extract

Program List > Electronic Fund Transfer > Transaction Processing

You use this program to extract Accounts Payable and Cash Book EFT (Electronic Funds Transfer) transactions into batches for payment by the bank.

We have added an operator activity that controls whether an operator can save the generated EFT payment file on the client or in the Downloads folder.

Affected business objects

The following indicates the business objects that are affected by this feature:

Setup objects

AP Supplier Maintenance

The **AP SUPPLIER MAINTENANCE**¹ business object lets you add, update or delete suppliers.

Bank Control Maintenance

The **BANK CONTROL MAINTENANCE**² business object lets you add, maintain or delete EFT banks.

Cash Book Beneficiary Maintenance

The **CASH BOOK BENEFICIARY MAINTENANCE**³ business object lets you add, maintain or delete EFT beneficiaries.

Query objects

CB Beneficiary Amendment Journal

The **CB BENEFICIARY AMENDMENT JOURNAL**⁴ business object lets you generate a list of all EFT cash book beneficiaries that were added, updated or deleted.

¹Business object: APSSSP

²Business object: EFTSMB

³Business object: EFTSMS

⁴Business object: EFTQAJ



www.syspro.com

Copyright © SYSPRO. All rights reserved.
All brand and product names are trademarks or
registered trademarks of their respective holders.

