

Integration Support

SYSPRO 8

Reference Guide

Published: February 2024



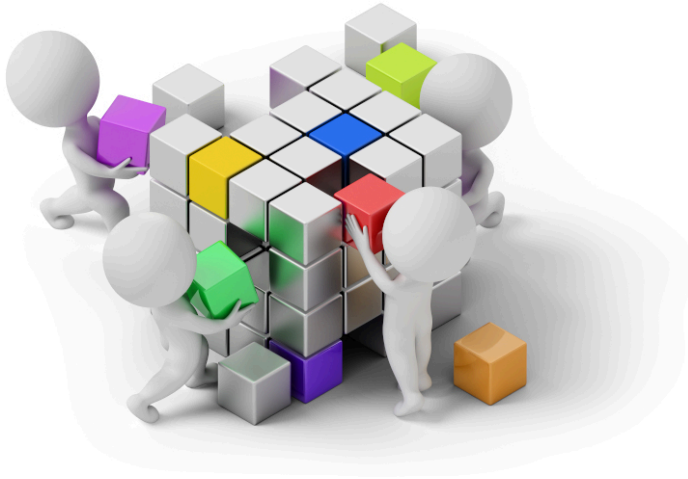
CONTENTS

Integration Support

2023	1
2022	6
2021-R2	8
2021-R1	11
2020-R2	14
2020-R1	15
2019-R2	18
2019-R1	25
2018	28

Integration Support

The following provides a summary of the features and functionality available in **SYSPRO 8**.



2023

Setup Objects

- The **EQUIPMENT TYPE SETUP**¹ business object lets you configure the setup for equipment types (i.e. used to group equipment codes). The information that you can specify includes the description for an equipment type, associated equipment code and whether a maintenance structure for the equipment code should be used.
- The **SERVICE STRUCTURE SETUP**² business object lets you configure the setup associated with service structures. The information you can specify includes the specific revision of the part or spare that will be used to maintain a machine, description of the non-stocked part or spare(s), equipment code and maintenance service type.
- The **SERVICE TYPE SETUP**³ business object lets you configure the setup for maintenance service types. The information you can specify includes the description of the maintenance service type, the type of maintenance service to be performed as well as the nature and type of service.
- The **SETUP DIMENSION ANALYSIS SECURITY**⁴ business object lets you configure the security associated with the **Dimension Analysis** feature. The information that you can specify and configure includes the role code for the configuration (if required) the operator

¹Business object: EAMSET

²Business object: Service Structure Setup

³Business object: EAMSST

⁴Business object: COMSFD

- associated with the configuration, company code, dimension category code and the whether the operator or role has access to the dimension category code.
- The **INTERCOMPANY TRANSACTION SECURITY SETUP**¹ business object lets you configure the security for inter-company transactions. The information you can specify includes the company, operator and the modules according to which configurations must be processed.
- The **ACCEPTANCE QUALITY LIMIT SETUP**² business object populates pre-built data for the **SYSPRO Quality Management** system. This pre-built data is sourced from a script executed by the **SQL Execute SQL Scripts** program.
- The **INSPECTION LEVEL TEST SETUP**³ business object lets you define which inspection tests need to be performed for each inspection level for your company as part of the **SYSPRO Quality Management** system. To assign or delete tests against an inspection level, you need to have access to the warehouse that applies to that specific inspection level.

Query Objects

- The **GL DIMENSION ANALYSIS QUERY**⁴ business object lets you query information relating to **Dimension Analysis** capability. The information that you can query includes dimension categories, dimension codes, credit amounts, debit amounts, etc. Additionally, you can filter according to assets, liabilities, revenue, capital, assets, expenses, ledger codes, ledger period and the ledger year.
- The **SO CUSTOMER CATALOG QUERY**⁵ business object lets you view active catalogs for customers according to specified, or all dates.
- The **CATALOGUE DETAILS GENERATION QUERY**⁶ business object lets you specify the data and information for sales order pricing catalogs.
- The **TPM QUERY BY STOCK CODE**⁷ business object lets you query information relating to Trade Promotion Management in your system according to stock codes.
- The **PICK OUTER DETAILS**⁸ business object lets you query pick outers according to whether they are ready to dispatch, have a status of dispatched or created as well as the outers that you want to query. Additionally, you can restrict the number of documents that are generated.

¹Business object: COMSPS

²Business object: SQMSAL

³Business object: SQMSLT

⁴Business object: GENQDQ

⁵Business object: SORQ52

⁶Business object: SORQ54

⁷Business object: TPMQST

⁸Business object: WHMQPO

- The **PICK SELECTION QUERY**¹ business object lets you query information about pick lines that are outstanding, have been invoiced, packed in outers according to specified customers, sales order numbers, pick numbers and dates.
- The **COM QUERY DIMENSION ANALYSIS SECURITY**² business object lets you query information relating to security configurations for the **Dimension Analysis** capability for operators, roles and companies.
- The **INTERCOMPANY TRANSACTION SECURITY QUERY**³ business object lets you query information relating to the security configurations for inter-company transactions.

Transaction Objects

- The **GL DIMENSION ANALYSIS EXTRACT**⁴ business object lets you extract results from the **Dimension Analysis** feature.
- The **GL DIMENSION CODE UPDATE POSTING**⁵ business object lets you update dimension codes for a specific dimension entry number or category item. Other information that you can specify includes the ledger code, ledger year, journal number and ledger code according to which you want to update the dimension codes.
- The **SERVICE OPERATION FUNCTIONS**⁶ business object lets you copy, move and delete operations for Enterprise Asset Management structures.
- The **QUALITY MANAGEMENT RETURN**⁷ business object lets you return items back to the supplier based on the results of a quality management inspection.
- The **CATALOG MAINTENANCE**⁸ business object lets you add, change, maintain or delete a sales order catalog. The information you can indicate includes the start date, expiry date, currency, whether to include a trade promotion, catalog status and customers to which the catalog applies.
- The **SO CREATE PICK FROM SO RELEASED TO PICK**⁹ business object lets you create or add to an existing pick. The information that you can indicate when creating or adding to existing pick includes the bin, lot number, quantity required, sales order number, sales order line number and serial number.
- The **CANCEL RMA HEADER/LINE**¹⁰ business object lets you cancel RMA and RMA lines.
- The **WHM ADD/DELETE OUTER**¹¹ business object lets you add or delete an outer.

¹Business object: WHMQPS

²Business object: COMQFD

³Business object: COMQPS

⁴Business object: GENTEX

⁵Business object: GENTUD

⁶Business object: EAMTMO

⁷Business object: PORTIQ

⁸Business object: SORT51

⁹Business object: SORTR1

¹⁰Business object: RMATRC

¹¹Business object: WHMTOU

- The **WHM DISPATCH OUTERS**¹ business object lets you indicate the outer that you want to dispatch.
- The **MARSHALLING**² business object lets you indicate the pick line of the pick number that you want to add or remove from the selected outer, the pick to be added or removed from the selected outer as well as the packed quantity that you want to add to the outer (which can be equal to or less than the picked quantity).
- The **SQM INSPECTION CREATION**³ business object lets you initiate and create a new Work in Progress or Purchase Orders inspection. The information that you need to indicate includes the WIP inspection reference or goods receipt number, the associated lot for the item that you want to inspect, stock code, quantity of items being inspected as well as the inspection level that you require.
- The **COPY OPERATOR OR ROLE COMPANY SECURITY**⁴ business object lets you copy configurations for an operator or role type for inter-company transactions and **Dimension Analysis** capabilities.
- The **POST SYSPRO EMBEDDED ANALYTICS CONFIG**⁵ business object creates and updates the **SYSPRO Embedded Analytics** configuration settings within the **Setup Options** program.
- The **INSPECTION PREBUILT DATA**⁶ business object populates pre-built data for the **Quality Management System**. This pre-built data is sourced from a script executed by the **SQL Execute SQL Scripts** program. The ISO plan can be supplied and caters for different ISO plans in the future.
- The **INSPECTION TEST QUEUE**⁷ business object lets you:
 - Submit the information for a test required to be performed against each sample test for the SQM inspection, when the `Action` element contains `T` and establishes if the sample test passes or fails inspection. Additionally, it also establishes if the SQM inspection passes or fails inspection and updates these inspections according to the inspection status with regards to passing or failing inspection.
 - To amend a test that was previously completed, when the sample basis is sample quantity and the sample test isn't already completed, when the `Action` element contains `A`.
 - Set an expected end date against a sample test, when the `Action` element contains `D`.
 - Assign an inspector against a test, when the `Action` element contains `I`. The inspector will be assigned according to the `Apply Individual Test` element:

¹Business object: WHMTPD

²Business object: WHMTOM

³Business object: SQMTIN

⁴Business object: COMTSC

⁵Business object: SEATSO

⁶Business object: SQMTPD

⁷Business object: SQMTWS

- □ □ When **I**, then the inspector will be applied to the individual test only.
- When **S**, then the inspector will be applied to the sample test only.
- When **A**, then the inspector will be applied to the sample test as well as all associated individual tests.
- Assign a serial to a test when the stock item is serialized, when the **Action** element is **S**.
- When the quality inspection originated from WIP inspection, then the **Capture serials at end of WIP inspection** must not be selected.
- Add short instructions to a sample test, when the **Action** element is **N**.
- Place an Inspection on hold , when the **Action** element is **H**.
- The **WIP PICK QUANTITY REVIEW**¹ business object lets you review pick quantities according to the job number, stock code, warehouse, customer, product class, work center, delivery date, product bin and WIP branch.

¹Business object: WIPRPB

2022

Setup Objects

- The **SO PICK ALLOCATION OVERRIDE**¹ business object lets you override a stock item's original bin, lot or serial that was allocated for picking. The updated allocation information is saved in the [SorPickAmendJnl](#) table.
- The **STOCK CODE BARCODE UOM XREF MAINTENANCE**² business object lets you create a cross-reference between a stock code's unit of measure and a barcode or RFID (radio frequency identification) code. This allows the stock item to be scanned in the warehouse.
- The **TPM PRICE MAINTENANCE**³ business object lets you bulk upload TPM price breaks.

Query Objects

- The **STOCK CODE BARCODE UOM XREF LIST QUERY**⁴ business object lets you query cross references that have been defined between a stock code's unit of measure and a barcode or RFID (radio frequency identification) code.
- The **SO PICK AMENDMENT JOURNAL QUERY**⁵ business object lets you query all items that have been changed on a pick line using the data on the [SorPickAmendJnl](#) table.

Transaction Objects

- The **AP PAYMENT INTEGRATION TO CASH BOOK**⁶ business object lets you integrate supplier payment runs to Cash Book as part of SYSPRO's fully-automated supplier payment process. This allows customers to tailor their supplier pay run processing using third party applications and to better manage the approval and execution of big payment runs.
- The **AP EXECUTE PAYMENT**⁷ business object lets you execute a payment run as part of SYSPRO's fully-automated supplier payment process. This allows customers to tailor their supplier pay run processing using third party applications and to better manage the approval and execution of big payment runs.



This business object caters for group payments but doesn't accommodate intercompany group payment runs.

¹Business object: SORTPA

²Business object: INVSSU

³Business object: TPMSM7

⁴Business object: INVQSU

⁵Business object: SORQPA

⁶Business object: APSTCI

⁷Business object: APSTPD

- The **TAX CONNECTORS AUDIT LOG PURGE**¹ business object lets you delete entries from the [AdmTaxAuditLog](#) table according to the purge options defined within the **Tax Interface Setup** program for **Avalara** and **Vertex**. The object is run from the **Tax Connectors Audit Log Purge** program.

The start time, end time and number of entries deleted is output to job logging as a record of purges processed.

- The **SO PICK ALLOCATION OVERRIDE**² business object lets you override a stock item's original bin, lot or serial that was allocated for picking. The updated allocation information is saved in the [SorPickAmendJnl](#) table.

¹Business object: IMPTTP

²Business object: SORTPA

2021-R2

Business Objects

Setup Objects

- The **BOM PRODUCTION LINE MAINTENANCE**¹ business object lets you add, change and delete production lines.
- The **BOM MULTIPLE SHIFT ALLOCATION**² business object lets you add, change and delete shift allocations.
- The **BOM SITE LOCATION MAINTENANCE**³ business object lets you add, change and delete site codes.
- The **BOM SHIFT DETAIL SETUP**⁴ business object lets you add, change and delete shift details.
- The **BOM SHIFT HEADER SETUP**⁵ business object lets you add, change and delete shift code records for the [BomShiftHdr](#) table.
- The **SO PRICE LIST DETAIL MAINTENANCE**⁶ business object lets you create price list detail records.
- The **SO PRICING ENGINE PRICE GROUP SETUP**⁷ business object lets you create price group records.
- The **SO PRICE LIST HEADER MAINTENANCE**⁸ business object lets you create list price header records.
- The **SO PRICING ENGINE PRICE GROUP RULES SETUP**⁹ business object lets you create price group rule records.
- The **WHM MISSION TEAM MAINTENANCE**¹⁰ business object lets you allocate a mission to a team.
- The **WHM MISSION TEAM EMPLOYEE MAINTENANCE**¹¹ business object lets you add, change or delete employees that form part of the teams to which missions can be allocated.
- The **TEAMS MAINTENANCE**¹² business object lets you add, change and delete teams that can be allocated to missions.

Query Objects

¹Business object: BOMSPL

²Business object: BOMSSA

³Business object: BOMSSC

⁴Business object: BOMSSD

⁵Business object: BOMSSH

⁶Business object: SORSPD

⁷Business object: SORSPG

⁸Business object: SORSPH

⁹Business object: SORSPR

¹⁰Business object: WHMSMT

¹¹Business object: WHMSTE

¹²Business object: WHMSTM

- The **AP CHECK AND REMITTANCE FORMAT QUERY¹** business object is used for online SRS printing and lets you query AP check and remittance format information for all document types against each bank code.
- The **AP CHECK/REMITTANCE DOCUMENT QUERY²** business object is used for online SRS printing and lets you query AP remittance format information against a single supplier.
- The **SHIFT PATTERN QUERY³** business object caters for the creation of the **BOM Shift Pattern Report**.
- The **COM QUERY ODATA OPERATORS⁴** business object lets you query OData operator information (e.g. operator code, name and credentials).
- The **SO PRICE GROUP QUERY⁵** business object lets you query price group and price group rule information.
- The **SO PRICING PRICE QUERY⁶** business object lets you query the best price details per stock code (and other prices available in a price group) for a specific customer.
- The **SO PRICING BEST PRICE QUERY⁷** business object lets you calculate the best price for a given stock code and price group.
- The **SO PRICE LIST QUERY⁸** business object lets you query a price list, with the option to see all associated stock codes and calculated prices.
- The **WHM COMPLETED MISSIONS QUERY⁹** business object lets you query all completed missions and tasks.
- The **WHM MISSION QUERY¹⁰** business object lets you query a mission, and the tasks associated with that mission, from the [WhmMission](#) table.
- The **WHM IN PROGRESS MISSIONS QUERY¹¹** business object lets you query all missions from the [WhmMission](#) table that are still in progress (i.e. missions that are not canceled or completed).
- The **WHM MISSIONS QUERY¹²** business object lets you query missions in the [WhmMissionTasks](#) and [WhmMission](#) tables and displays their status and source (i.e. picking, cycle counting or inventory putaway). It is called from the **WHM Review Mission Tasks** program and loads the results in the listview.

¹Business object: APSQD1

²Business object: APSQDP

³Business object: BOMQSP

⁴Business object: COMQOD

⁵Business object: SORQPG

⁶Business object: SORQPP

⁷Business object: SORQPQ

⁸Business object: SORQPR

⁹Business object: WHMQCM

¹⁰Business object: WHMQMS

¹¹Business object: WHMQPM

¹²Business object: WHMQSM

- The **WHM MISSION TEAM EMPLOYEES QUERY**¹ business object lets you query any single input team operator from the [WhmTeamEmployees](#) table.
- The **WIP BALANCE QUERY**² business object is part of a suite of business objects that lets you quickly identify whether there are imbalances between Work in Progress tables.
- The **JOB NESTING QUERY BUSINESS OBJECT**³ business object lets you query job nests according to a range of filters (e.g. job, job nest, nest status, parent stock code and work center. You can optionally choose to view a summary of the data, or a detailed query that shows all the information regarding the nests.

Transaction Objects

- The **VESSEL MAINTENANCE**⁴ business object lets you add, maintain and delete LCT vessels.
- The **PO STATUS CHANGE**⁵ business object lets you change the status of a purchase order.
- The **WHM MISSION PURGE**⁶ business object lets you selectively purge complete or canceled missions and tasks from the [WhmMission](#) and [WhmMissionTasks](#) tables. It is run from the **WHM Mission Purge** program.
- The **WHM MISSION COMPLETE/CANCEL**⁷ business object lets you complete or cancel a putaway (e.g. a warehouse or bin transfer) and is called from the **WHM Review Mission Tasks** program.
- The **WMS PUTAWAY ENTRY**⁸ business object lets you add putaways to the [WhmMissionTasks](#) and [WhmMission](#) tables.
- The **WHM ALLOCATE EMPLOYEE/TEAM**⁹ business object lets you allocate employees and teams to a task or a mission.

Utility Objects

- The **WHM MISSION AND TASKS ENTRY UTILITY**¹⁰ business object lets you add and change the status of missions and tasks created.

¹Business object: WHMQTE

²Business object: WIPQBL

³Business object: WIPQJN

⁴Business object: PORTMA

⁵Business object: PORTOS

⁶Business object: WHMT01

⁷Business object: WHMTCM

⁸Business object: WHMTPE

⁹Business object: WHMTTM

¹⁰Business object: WHMUMM

2021-R1

Business Objects

Setup Objects

- The **AP SUPPLIER GROUP MAINTENANCE**¹ business object lets you define primary and secondary suppliers for payment against a group supplier. Records are written to the [ApSupplierGroup](#) table.
- The **AR CUSTOMER GROUP MAINTENANCE**² business object lets you define primary and secondary customers for payment against a customer group. Records are written to the [ArCustomerGroup](#) table.
- The **INVENTORY WAREHOUSE BIN MAINTENANCE**³ business object lets you add, update and delete fixed bins.
- The **PORT/AIRPORT MAINTENANCE**⁴ business object lets you create ports and airports that are used for IntraStat transactions.
- The **REGIME CODE MAINTENANCE**⁵ business object lets you maintain regime codes (used to identify and report on IntraStat transactions) stored in the [SalRegimeCode](#) table.

Query Objects

- The **AP GROUP SUPPLIER CASH REQUIREMENTS**⁶ business object lets you query cash requirements for a group supplier.
- The **AP LIST OF SUPPLIER GROUPS QUERY**⁷ business object lets you query records held against the [ApSupplierGroup](#) table in order to establish the primary and secondary supplier relationships for processing group payments.
- The **AR CUSTOMER GROUP QUERY**⁸ business object lets you query customer groups in the [ArCustomerGroup](#) table.
- The **AR GROUP PAYMENT RUN REPORT**⁹ business object lets you query customer group payment records to establish which payments have been made.
- The **ASSET BALANCE HEALTH CHECK**¹⁰ business object lets you report on and create log files of integrity errors detected within [Assets](#) module tables, without actually updating any values.

¹Business object: APSSSG

²Business object: ARSSCG

³Business object: INWSBW

⁴Business object: SALSPT

⁵Business object: SALSRG

⁶Business object: APSQGR

⁷Business object: APSQSG

⁸Business object: ARSQCG

⁹Business object: ARSQGP

¹⁰Business object: ASSQBF

- The **COM SAMS EXTRACT QUERY**¹ business object lets you collect system configuration information from a site and upload it to a cloud service.
- The **DIGITAL TAX TOOL STATUS**² business object lets you report on the reprint flags added to the [AdmTaxReturn](#) table for the **Digital Tax System**. It compiles a summary or detailed view on whether transactions have been printed or submitted based on the [DttStatus](#) and [DttSubmitted](#) columns of the [AdmTaxReturn](#) table.
- The **SO CUSTOMER BALANCES QUERY**³ business object forms part of a suite of business objects that lets you identify imbalances between the active orders in SYSPRO and records held in the [ArCustomer](#) table.
- The **WIP BRANCH COSTS QUERY**⁴ business object lets you query the total material costs, total labor costs, and total hours booked for each WIP branch and job.
- The **BRANCH TRANSFER QUERY**⁵ business object lets you query WIP branch transfer transactions recorded in the [WipBranchTransfer](#) table for jobs are processed at different WIP branches.
- The **WIP JOB COSTS PER WIP BRANCH QUERY**⁶ business object lets you calculate the total material costs, labor costs and hours booked per job and WIP branch, using the job detail information from the [WipJobPost](#) table.
- The **TRANSFER JOB TO WIP BRANCH**⁷ business object lets you transfer a job to another WIP branch that is used against one of the job operations.

Transaction Objects

- The **ASSET BALANCE HEALTH FIX**⁸ business object lets you report on, fix, and create log files of any integrity errors detected within tables of the **Assets** module.
- The **CSH DEPOSITS AND WITHDRAWALS**⁹ business object lets you enter details of deposits and withdrawals, change existing transactions, reconcile or unreconcile transactions, and process inter-bank transfers in Cash Book. It can also be used to process foreign currency transactions through either a local or foreign bank account.
- The **BOM COST IMPLOSION**¹⁰ business object lets you calculate and update costs using SQL-only statements (instead of temporary files). The business object is only used if you uncheck the **RUN COST IMPLOSION IN LEGACY MODE** option of the **Cost Implosion** program.

¹Business object: COMQAS

²Business object: IMPQDS

³Business object: SORQCB

⁴Business object: WIPQBC

⁵Business object: WIPQJB

⁶Business object: WIPQJC

⁷Business object: WIPTTB

⁸Business object: ASSTBF

⁹Business object: CSHTWD

¹⁰Business object: BOMTCI

- The **TAX INTERFACE**¹ business object interfaces with the Avalara and Vertex tax systems.
- The **STOCK TAKE CANCELLATION**² business object lets you cancel a stock take and clear the stock take tables. It is called when you run the **Stock Take Cancellation** program from the **SYSPRO Desktop** version.
- The **STOCK TAKE SELECTION**³ business object lets you select the stock codes you want to include in a stock take count. The selection of stock items to count is the first step in the stock take process.
- The **SO CUSTOMER BALANCE FUNCTION**⁴ business object forms part of a suite of business objects that lets you correct imbalances between the active orders in SYSPRO and records held in the **ArCustomer** table.

¹Business object: IMPTAT

²Business object: INVT6C

³Business object: INVT60

⁴Business object: SORTCB

2020-R2

Business Objects

Setup Objects

- The **WIP BY BRANCH MAINTENANCE**¹ business object lets you add, maintain and delete WIP branches.

Query Objects

- The **COM QUERY SRS DOCUMENTS**² business object is called by a generic search in SYSPRO Avanti to access SRS Documents in SYSPRO.
- The **COM QUERY SRS DOCUMENT TYPES**³ business object is called by a generic search in SYSPRO Avanti to access SRS Document types in SYSPRO.
- The **INVENTORY STOCK TAKE TICKETS QUERY**⁴ business object generates stock take tickets for items you are counting within a warehouse and prints the report using the **Stock Take Tickets** program.
- The **INVENTORY LABEL PRINT REPORT**⁵ business object generates and prints up to 9999 labels for every selected stock code using the **Inventory Label Print** program.
- The **INTRASTAT TRIANGULATION ARRIVALS QUERY**⁶ business object lets you report on all Intrastat arrival transactions, including each transaction's country of origin, destination state, triangulation role, shipping location and mode of transport.
- The **SA INTRASTAT TRIANGULATION DISPATCHES**⁷ business object lets you report on all Intrastat dispatch transactions, including each transaction's country of origin, destination state, dispatch state, triangulation role and mode of transport.
- The **SALES ORDER LABEL PRINT REPORT**⁸ business object generates and prints up to 9999 labels for selected sales orders or dispatch notes using the **SO Label Print** program.
- The **SRS QUERY FUNCTIONS**⁹ business object scans through specific folders to find any appropriate files to import. Once a file is imported it is moved to the appropriate sub folder in the new `\Base\ReportingCustomized\BackUp` folder.

Storing the contents of the ReportingCustomized folder in SQL, helps SaaS environments retain any customizations and to help system administrators backup and restore SRS customizations as part of the System wide database backup.

¹Business object: WIPSBN

²Business object: COMQDO

³Business object: COMQDT

⁴Business object: INVQ62

⁵Business object: INVQLP

⁶Business object: PORQEC

⁷Business object: SALQEC

⁸Business object: SORQLA

⁹Business object: SRSQRY

2020-R1

Business Objects

Query Objects

- The **COM QUERY MFA OPERATOR HISTORY**¹ business object lets you query an operator's history information for multi-factor authentication purposes.
- The **QUERY SYSTEM SETUP OPTIONS**² business object lets you query the system options configured within the **Setup Options** program.
- The **TAX RETURN STATUS**³ business object lets you query tax return transactions that are not printed, not submitted, and submitted for a single year and period or a range of year and period (highlighting tax lines that may not have been submitted).
- The **GTR DETAIL AMENDMENT JOURNAL QUERY**⁴ business object lets you query the Gtr Detail Amendment Journal transactions.
- The **INVENTORY LOST AND FOUND WAREHOUSE QUERY**⁵ business object lets you query inventory lost and found warehouse transactions.

Transaction Objects

- The **PRODUCT CONFIGURATOR CALCULATIONS**⁶ business object lets you maintain calculations of the product configurator. Calculations can be added, copied, deleted, and updated.
- The **PRODUCT CONFIG REPLACE WHERE USED**⁷ business object is used by the **Configurator Replace Component Where Used** program and lets you globally replace one component with another component in one or more configurations.
- The **PRODUCT CONFIGURATOR DEPENDENCIES**⁸ business object lets you maintain product configurator dependencies. Dependants (selection criteria and components) can be added and deleted.
- The **PRODUCT CONFIGURATOR INVALID SELECTION**⁹ business object lets you add and delete invalid product configurator selections.
- The **PRODUCT CONFIGURATOR CRITERIA MAINTENANCE**¹⁰ business object lets you add and delete product configurator criteria.

¹Business object: COMQMH

²Business object: COMQSY

³Business object: IMPQRS

⁴Business object: INVQGA

⁵Business object: INVQWL

⁶Business object: CFGTCL

⁷Business object: CFGTDF

⁸Business object: CFGTDP

⁹Business object: CFGTIS

¹⁰Business object: CFGTMC

- The **PRODUCT CONFIGURATOR OPERATION MAINTENANCE**¹ business object lets you add and delete product configurator operations.
- The **PRODUCT CONFIGURATOR MATERIAL MAINTENANCE**² business object lets you add and delete product configurator materials.
- The **PRODUCT CONFIGURATOR OPTIONS MAINTENANCE**³ business object lets you add and delete product configurator options.
- The **PRODUCT CONFIGURATOR SELECTION MAINTENANCE**⁴ business object lets you add and delete product configurator selections.
- The **POST SYSTEM SETUP OPTIONS**⁵ business object lets you post system setup options for the **Setup Options** program.
- The **MRP REQUIREMENTS CALCULATION OBJECT**⁶ business object facilitates a SQL-only version of the **Requirements Calculation**.
- The **SO DISPATCH NOTE CONSOLIDATION**⁷ business object lets you consolidate dispatch notes for invoicing.
- The **SO CREDIT NOTE CHANGE KIT COMPONENT LNS**⁸ business object lets you maintain credit note lines of a kit component.
- The **SO SALES ORDER CHANGE KIT COMPONENT LNS**⁹ business object lets you maintain sales order lines of a kit component.

Utility Objects

- The **MRP COPY TO SNAPSHOT UTILITY**¹⁰ business object lets you copy all relevant live data of the **Requirements Calculation** to the SQL snapshot tables.
- The **MRP DEMAND UTILITY**¹¹ business object updates the **MrpRequirement**, **MrpDetailPegging** and **MrpMpsDetPegging** tables with existing demand (e.g. forecasts, sales orders, supply chain transfers, material allocations, quotations or store requisitions).

¹Business object: CFGTML

²Business object: CFGTMM

³Business object: CFGTMO

⁴Business object: CFGTMS

⁵Business object: COMTSY

⁶Business object: MRPTRC

⁷Business object: SORTCD

⁸Business object: SORTCR

⁹Business object: SORTSU

¹⁰Business object: MRPUCS

¹¹Business object: MRPUDM

- The **MRP FUNCTION CREATION UTILITY**¹ business object calls several utilities to handle the various phases of processing. It creates, grants permission, and deletes the necessary functions needed for the **Requirements Calculation**.
- The **MRP LOT EXPIRY UTILITY**² business object lets you build temporary lot expiry records to be depleted and creates lot expiry demand records for any remaining records.
- The **MRP LOW LEVEL CODE CALCULATION UTILITY**³ business object lets you calculate the low level codes for all items using the Bill of Material (archived BOM) and Quotation structure tables, as well as the Work in Progress tables.
- The **MRP NETTING OFF UTILITY**⁴ business object updates the [MrpRequirement](#), [MrpDetailPegging](#) and [MrpMpsDetPegging](#) tables with the existing supply (e.g. supply chain transfers, jobs, purchase orders, requisitions, goods in transit, inventory stock and non-stocked items).
- The **MRP NETTING OFF UPDATE UTILITY**⁵ business object lets you reschedule specific and existing supply, and raise suggested supply.
- The **MRP SUPPLY UTILITY**⁶ business object updates the [MrpRequirement](#), [MrpDetailPegging](#) and [MrpMpsDetPegging](#) tables with existing supply (e.g. supply chain transfers, jobs, purchase orders, requisitions, goods in transit, inventory stock and non-stocked items).
- The **POST MULTIPLE BIN UTILITY PROGRAM**⁷ business object updates the bin as part of the continued effort to create utility programs during the purchase order receipt process.

¹Business object: MRPUFS

²Business object: MRPULE

³Business object: MRPULL

⁴Business object: MRPUNO

⁵Business object: MRPUNU

⁶Business object: MRPUSY

⁷Business object: PORURB

2019-R2

Business Objects

Component objects

- The **COM AD SYNCHRONIZATION**¹ business object lets you synchronize active directory (AD) users with SYSPRO.
- The **UPDATE PURCHASE ORDER LINE UTILITY**² business object lets you create purchase orders from requisitions.
- The **POST S/ORDER RECEIPT UTILITY PROGRAM**³ business object lets you validate and update the details related to an associated sales order and then posts the transaction details when doing a purchase order receipt.
- The **RTS CONVERSION PROGRAM**⁴ business object lets you convert from RTV to RTS.
- The **RTS CONVERSION CHECK**⁵ business object warns you that the system needs to be converted from RTV to RTS and prompts you to run the conversion.
- The **RTS GL UPDATE UTILITY PROGRAM**⁶ business object is used when running the conversion from RTV to RTS.

It forces the transaction values (made when creating the various RTS entries) through to GL. The journal created from these transactions is stored in the [GenJournalDetail](#) table.

- The **RTS UPDATE JOURNAL PRINTED FLAG**⁷ business object lets you reset all RTS printed journals to not printed.
- The **RTS FROM P/ORDER RECEIPTS**⁸ business object lets you create an RTS from a purchase order.
- The **RTS UPDATE RETURN SLIP FLAG**⁹ business object lets you reset the return slip printed flag for RTS's with a status of `Normal`.

¹Business object: COMTSS

²Business object: PORULN

³Business object: PORUSO

⁴Business object: RTSTCV

⁵Business object: RTSUCC

⁶Business object: RTSUGL

⁷Business object: RTSUJP

⁸Business object: RTSUPO

⁹Business object: RTSURE

Setup Objects

- The **PRODUCT CONFIGURATOR SETUP**¹ business object lets you add, change and delete product codes for a product configurator.
- The **COMPLAINT GROUP SETUP BUSINESS OBJECT**² business object lets you add, maintain and delete customer complaint groups.
- The **COMPLAINT OWNER SETUP BUSINESS OBJECT**³ business object lets you add, maintain and delete customer complaint owners.

Complaint owner details are saved to the [CrmCompOwners](#) table.

- The **COMPLAINT ROUTE REASON SETUP**⁴ business object lets you add, maintain and delete customer complaint severity levels.

Customer complaint severity details are saved to the [CrmCompSeverity](#) table.

- The **COMPLAINT USER SETUP BUSINESS OBJECT**⁵ business object lets you add, maintain and delete customer complaint users.

Customer complaint user details are saved to the [CrmCompUsers](#) table.

- The **COMPLAINT SEVERITY SETUP BUSINESS OBJECT**⁶ business object lets you add, maintain and delete customer route reasons.

Customer route reason details are saved to the [CrmCompRouting](#) table.

Query Objects

- The **CUSTOMER COMPLAINTS QUERY**⁷ business object lets you query the [AdmSchHeader](#) system-wide database table.
- The **COM QUERY SYSPRO SCHEDULE**⁸ business object lets you query information about customer complaints (e.g. complaint details, linked activities, and resolution details for resolved complaints).
- The **GL BALANCE CHECK QUERY**⁹ business object lets you query the General Ledger and company balances to ensure that they are in balance. Discrepancies are output to the [GenHealthBal](#) table.
- The **INVENTORY CYCLE COUNT QUERY**¹⁰ business object lets you query cycle count details.

¹Business object: CFGSCF

²Business object: CMSSGR

³Business object: CMSSOW

⁴Business object: CMSSRR

⁵Business object: CMSSUR

⁶Business object: CMSSVE

⁷Business object: CMSQCY

⁸Business object: COMQSH

⁹Business object: GENQBL

¹⁰Business object: INVQC1

- The **INVENTORY CYCLE COUNTS LIST QUERY**¹ business object lets you query a list of cycle counts that have been created, including whether cycle counts are in progress.
- The **INVENTORY CYCLE COUNT CAPTURE QUERY**² business object lets you query the [InvCycleCountCapt](#) table to view details of captured cycle counts.
- The **INVENTORY CYCLE COUNT PERFORMANCE**³ business object lets you query the [InvCycleCountCapt](#) table to view captured quantities and variances as well as how many times an operator captured items and how many times an item has been captured.
- The **INVENTORY CYCLE COUNT QUERY**⁴ business object lets you query the [InvCycleCountBin](#), [InvCycleCountLot](#) and [InvCycleCountSer](#) tables to view details on lots and serials used in cycle counts. Quantity variances are also displayed.
- The **RFQ ATTACHMENTS QUERY**⁵ business object lets you query all media files attached to an RFQ.

Attachments can be made at the following (<LevelID>) levels:

- R - indicates MasterMedia
- L - indicates LineMedia
- S - indicates SupplierMedia
- The **RFQ PRINT QUERY**⁶ business object lets you query the status of RFQ lines (e.g. in process, accepted, canceled) and the supplier status (e.g. waiting for quote, quote accepted, quote rejected, and no reply). This object is used by the **Request for Quote Maintenance** program.
- The **RFQ QUERY**⁷ business object lets you query all details for existing RFQ's.
- The **RTS JOURNAL REPORT**⁸ business object lets you query RTS journals for printing and reprinting over a selected period. The status of unprinted journals is also updated. This object is used by the **RTS Journal Report** SRS report program.
- The **RTS RETURNS QUERY**⁹ business object lets you query RTS transactions.
- The **RTS STATUS QUERY**¹⁰ business object lets you query the status of RTS transactions (e.g. normal, accepted, rejected).

¹Business object: INVQCC

²Business object: INVQCE

³Business object: INVQCR

⁴Business object: INVQCS

⁵Business object: PORQMD

⁶Business object: PORQQ3

⁷Business object: PORQQY

⁸Business object: RTSQJN

⁹Business object: RTSQRN

¹⁰Business object: RTSQS1

- The **RTS RETURN SLIP PRINTING**¹ business object lets you print RTS return slips that accompanies merchandise. This object is used by the **RTS Return Slip Print** SRS report program.

Transaction Objects

- The **CUSTOMER COMPLAINTS CAPTURE**² business object lets you capture new complaints. This object is called by the **Customer Complaints Entry** program to generate new complaints.
- The **COM MAINTAIN SYSPRO SCHEDULE**³ business object lets you add, maintain and delete SYSPRO schedules. Schedule details are saved to the **AdmSchHeader** and **AdmSchDetail** tables.
- The **COM TRANSACTION MAINTAIN SQL LOGIN**⁴ business object lets you create and maintain SQL logins and passwords, as well as create the SQL user on the system wide and company databases.

It adds the user to both the system and the allowed company databases and alters datareader and datawriter roles on each SYSPRO company database to which the user has been granted access (including the system wide database).

When deleting a SQL login, the user is removed from all SYSPRO company databases to which access was granted (including the system wide database).

- The **GL BALANCE FUNCTION**⁵ business object lets you compare the General Ledger and company balances to ensure that they are in balance. Discrepancies are output to the **GenHealthFix** table.
- The **CYCLE COUNT SELECTION**⁶ business object lets you add the selected items (bins, lots, serials) to the cycle count. Tables updated include:
 - **InvCycleCountBin**
 - **InvCycleCountSer** (if serials are defined for the selected stock items in the cycle count)
 - **InvCycleCountLot** (if lot numbers are defined for the selected stock items in the cycle count)
- The **CYCLE COUNT MAINTENANCE**⁷ business object lets you add, change and delete a cycle count.

¹Business object: RTSQSL

²Business object: CMSTCC

³Business object: COMTSH

⁴Business object: COMTSL

⁵Business object: GENTBL

⁶Business object: INVTC1

⁷Business object: INVTC2

- The **INVENTORY CYCLE COUNT CANCEL**¹ business object lets you cancel a cycle count. When a cycle count is canceled, the records in the [InvCycleCountBin](#), [InvCycleCountSer](#), [InvCycleCountLot](#) and [InvCycleCountCapt](#) tables for the selected cycle count are removed.
- The **INVENTORY CYCLE COUNT CONFIRMATION**² business object lets you accept a cycle count and confirm the bins in the cycle count. The relevant inventory records are updated in the [InvMultBin](#), [LotDetail](#) and [InvSerialHead](#) tables.
- The **INVENTORY CYCLE COUNT CAPTURE PURGE**³ business object lets you purge cycle counts.
- The **INVENTORY CYCLE COUNT CAPTURE**⁴ business object lets you capture the items for the selected cycle count.
 - Items without lots and serials are captured in the [InvCycleCountBin](#) and [InvCycleCountCapt](#) tables.
 - Items with serials are captured in the [InvCycleCountBin](#), [InvCycleCountSer](#) and [InvCycleCountCapt](#) tables.
 - Items with serials and lots are captured in the [InvCycleCountBin](#), [InvCycleCountSerInvCycleCountSer](#) and [InvCycleCountCapt](#) tables.
 - Items with lots are captured in the [InvCycleCountBin](#), [InvCycleCountLot](#) and [InvCycleCountCapt](#) tables.
- The **CYCLE COUNT CONFIRMATION SCHEDULER**⁵ business object lets you select a cycle count based on the schedule id provided by the **SYSPRO Scheduler** program. The [InvCycleCount](#) table is queried to establish the cycle count for the schedule id and the **CYCLE COUNT SELECTION**⁶ business object is called to select the cycle count.
- The **RFQ MEDIA BUSINESS OBJECT**⁷ business object lets you store media attachments for RFQ's for either an RFQ header, a line, or a supplier.
- The **REQUEST FOR QUOTE REVIEW**⁸ business object lets you create new RFQ's, allowing you to add the RFQ header details as well as RFQ stocked lines (linked to the requisition lines from which the RFQ is derived). You can also add the set of supplier(s) for the specific RFQ.
- The **REQUEST FOR QUOTE MAINTENANCE**⁹ business object lets you maintain RFQ's.

¹Business object: INVTCT

²Business object: INVTCC

³Business object: INVTCP

⁴Business object: INVTCR

⁵Business object: INVTCT

⁶Business object: INVTC1

⁷Business object: PORTMD

⁸Business object: PORTQ1

⁹Business object: PORTQ2

- The **RFQ SUPPLIER PORTAL**¹ business object lets you add RFQ supplier quotes.
- The **RTS ACCEPT/REJECT BUSINESS OBJECT**² business object lets you accept or reject the RTS transaction.
- The **RTS GL INTEGRATION UPDATE**³ business object lets you convert the General Ledger integration from RTV to RTS.
- The **RTS CREATION/CHANGE BUSINESS OBJECT**⁴ business object lets you add and maintain RTS's.
- The **SO CONSOLIDATE DISPATCH INVOICE CALCULATION**⁵ business object lets you post invoices against consolidated dispatch notes.

The **Dispatch Note Consolidation** program creates the consolidation records against the invoice. When the invoice is posted, all required transactions and calculations are processed and saved to the SYSPRO database.

A copy of the invoice information is stored and can be printed/reprinted using the **SO CONSOLIDATED DISPATCH INV DOC QUERY**⁶ business object or the **Document Print** program.

- The **SO DISPATCH NOTE MAINTENANCE**⁷ business object lets you maintain the sales order dispatch note.

When the dispatch quantity is reduced, the back order quantity against the sales order line is automatically increased.

Allocations for traceable or serialized stock items must be de-allocated in the stocking unit of measure. Stock allocations against the dispatch line can be reduced or deleted, but can't be changed to a different lot, bin or serial.

- The **SO CHANGE DISPATCH STATUS**⁸ business object lets you change the status of a dispatch note.

Current status	Can be changed to:
Entered	<ul style="list-style-type: none"> ▫ Suspend ▫ Hold

¹Business object: PORTQ4

²Business object: RTSTAR

³Business object: RTSTGG

⁴Business object: RTSTOI

⁵Business object: SORTCC

⁶Business object: SORQCD

⁷Business object: SORTDM

⁸Business object: SORTDS

Current status	Can be changed to:
Dispatch note printed	<ul style="list-style-type: none">Released to invoiceSuspenseHold
Released to invoice	<ul style="list-style-type: none">SuspenseHold
Suspense	<ul style="list-style-type: none">The last status of the dispatch note before it was put in suspense.
Hold	<ul style="list-style-type: none">The last status of the dispatch note before it was put on hold.

2019-R1

Business Objects

Component objects

- The **COM COMPANY SETTINGS EXPORT UTILITY**¹ business object lets you export your company settings to a `.txt` format file that can be imported into another company.
- The **DATA DICTIONARY EXPORT SAN_TABLE.SQL**² business object lets you create the table script for the SYSPRO Analytics database update.
- The **DATA DICTIONARY EXPORT SAN_COLUMN.SQL**³ business object lets you create the column script (`SOURCE\SAN_COLUMN.SQL`) for the SYSPRO Analytics DB update.
- The **UPDATE PURCHASE ORDER EMAIL UTILITY**⁴ business object lets you update the email address on all live purchase orders.
- The **RMA ALLOCATE LBS LINK TO IMPPBL UI**⁵ business object provides the interface when processing lots, bin and serial transactions between RMA programs and the **Bins, Lots & Serial Allocation** program.

Query Objects

- The **COM DIAGNOSTIC EXTRACT QUERY**⁶ business object lets you extract (from the **Diagnostic Extract Utility** program) diagnostic information about a customer's SYSPRO setup.
- The **COM SQL INFORMATION QUERY**⁷ business object lets you query SQL information that is available from the **SQL Health Dashboard** program.
- The **COM VERIFY OPERATOR PASSWORD**⁸ business object lets you indicate an operator password for a specific operator and verifies whether that password is correct. This is intended for use in e.net systems prior to logging in as a SYSPRO operator.
- The **ALLOCATED LBS QUERY BUSINESS OBJECT**⁹ business object lets you query allocated bins, lots and serials for **Work in Progress, Sales Orders, Return Merchandise**, and **Dispatch Notes**.
- The **ON HOLD QUERY BUSINESS OBJECT**¹⁰ business object lets you query stock codes, bins, lots or serials that are on hold.

¹Business object: COMUCS

²Business object: DDSSQ3

³Business object: DDSSQ4

⁴Business object: PORUEM

⁵Business object: RMAUAS

⁶Business object: COMQDG

⁷Business object: COMQSI

⁸Business object: COMQVP

⁹Business object: IMPQAL

¹⁰Business object: INVQRH

- The **PRODUCT RECALL BUSINESS OBJECT**¹ business object lets you query product recalls that are currently held on file.
- The **LOT PRODUCT RECALL SELECTIONS QUERY**² business object lets you query items (e.g. warehouses, bins, lots, serials) that must be included in a product recall.
- The **PURCHASE ORDER DOCUMENT DETAILS QUERY**³ business object lets you return the purchase order document XML for a single purchase order.
- The **PO DOCUMENT DOCUMENT PRINT QUERY**⁴ business object lets you use the XML output from **PURCHASE ORDER DOCUMENT DETAILS QUERY**⁵ to print the purchase order document in **SYSPRO Espresso**.
- The **SO PICKING SLIP QUERY**⁶ business object lets you query picking lists and return the sales order lines, as well as the allocations for these sales order lines, in a required pick.
- The **SO PICK QUERY**⁷ business object lets you query sales order picks and display the pick lines for the entered pick number. Pick line details include the quantity in picking, the sales order line attached to the pick, and the status of each pick line.

Retrieve Objects

- The **SO PICK QUANTITY REVIEW**⁸ business object displays a list of sales orders that have been reserved for picking, together with their corresponding ship quantities.

Transaction Objects

- The **MERGE CUSTOM DATA DICTIONARY TO LIVE**⁹ business object lets you create and deploy third party custom data dictionaries.
- The **COM DIAGNOSTIC UPLOAD POST**¹⁰ business object lets you upload diagnostic data for support purposes.
- The **COM IMPORT PROGRAMS, ACTIVITIES AND ESIG**¹¹ business object lets you upload standard and custom tiles to the system wide database. This is done as part of the minor database release.

¹Business object: LOTQPR

²Business object: LOTQPS

³Business object: PORQD2

⁴Business object: PORQDP

⁵Business object: PORQD2

⁶Business object: SORQPK

⁷Business object: SORQPN

⁸Business object: SORRPB

⁹Business object: COMTDC

¹⁰Business object: COMTDU

¹¹Business object: COMTII

- The **ON HOLD PROCESSING**¹ business object lets you maintain the hold status of stock codes, bins, lots and serials.
- The **ADDITIONAL LOT**² business object lets you add and maintain additional lot names.
- The **LOT PRODUCT RECALL QUARANTINE**³ business object lets you create and maintain product recalls.
- The **COPY LCT BILL**⁴ business object lets you copy an LCT bill from a specific stock code to a selection of all, range, single, or list of stock codes.
- The **SO RELEASE SALES ORDERS TO PICKING**⁵ business object lets you create a new pick on the sales order line as well as add the sales order line to the existing pick.
- The **SO PICK STATUS CHANGE**⁶ business object lets you change the status of a pick from **S - STARTED** to **F - CONFIRMING**, **X - CANCELLED** or **C - PICKED**.

The business object also changes the status of pick lines.

¹Business object: INVTRH

²Business object: LOTTLA

³Business object: LOTTQT

⁴Business object: PORTBC

⁵Business object: SORTPN

⁶Business object: SORTPS

2018

Business Objects

Setup Objects

- The **AR DUNNING GROUP MAINTENANCE**¹ business object lets you add, update and delete Dunning groups held against the [ArDunningGroup](#) table.
- The **AR DUNNING STATUS MAINTENANCE**² business object lets you add, update and delete Dunning statuses.
- The **PO SUPPLIER CONTRACT**³ business object lets you add, change and delete supplier contracts.
- The **COM HARMONY MAINTENANCE**⁴ business object is used by the AI Administrator program.
- The **DFM POLLER SERVICE MAINTENANCE**⁵ business object lets you add, update and delete the DFM folder and Queue services.

Query Objects

- The **AR DUNNING LETTER FORMAT**⁶ business object lets you query Dunning letter formats.
- The **AP BALANCE HEALTH CHECK**⁷ business object lets you report on and create log files of AP data integrity errors.
- The **AR INVOICE AGE AND TERMS**⁸ business object lets you produce a temporary aged invoice table version of the [ArInvoice](#) table. The temporary table can be used by any program that still needs to perform any aging method to the standard invoice table.
- The **AR BALANCE HEALTH CHECK**⁹ business object lets you report on and create log files of AR data integrity errors.
- The **AR STATEMENT SRS FORMAT QUERY**¹⁰ business object lets you return a list of all formats defined for the AR Statement document type that have been configured to use SRS Document printing, as well as the document control file information for a single format.
- The **LIST OF DUNNING GROUPS QUERY**¹¹ business object lets you output a list of Dunning groups, which can be filtered by list, single, range or all.

¹Business object: ARSSDG

²Business object: ARSSDS

³Business object: PORSCS

⁴Business object: HRMTES

⁵Business object: DFMSFP

⁶Business object: IMPQSD

⁷Business object: APSQBF

⁸Business object: ARSQAG

⁹Business object: ARSQBF

¹⁰Business object: ARSQD1

¹¹Business object: ARSQDG

- The **AR STATEMENT DOCUMENT PRINT QUERY**¹ business object lets you return the AR Statement document XML for a single customer.
- The **LIST OF DUNNING STATUSES QUERY**² business object lets you return all Dunning statuses for multiple Dunning groups.
- The **CASH BOOK BALANCE CHECK QUERY**³ business object lets you examine Cash Book transactions to perform a health check.
- The **GL BALANCE CASH BOOK**⁴ business object lets you balance the Cash Book to the General Ledger.
- The **PREFERRED SUPPLIER QUERY**⁵ business object lets you query preferred suppliers for sourcing policies against a stock code/warehouse.
- The **INVENTORY SOURCING POLICIES QUERY**⁶ business object lets you query sourcing policies.
- The **PO SUPPLIER'S PERFORMANCE QUERY**⁷ business object lets you query purchase order supplier performance details.
- The **PO DOCUMENT FORMAT QUERY**⁸ business object lets you query purchase order document types.
- The **WIP JOB RESERVATIONS REVIEW QUERY**⁹ business object lets you query job reservations. This information is used by the **WIP Reservations Review** program to release or reserve reservations.
- The **WIP FACTORY DOCUMENT FORMAT QUERY**¹⁰ business object lets you query quotation documentation for WIP Factory Document types.
- The **WIP FACTORY DOCUMENT PRINT QUERY**¹¹ business object lets you return the XML required to produce WIP Factory Documents using the SRS Server-side printing architecture.
- The **SO PICK SEARCH QUERY**¹² business object lets you query picking detail lines.

¹Business object: ARSQDP

²Business object: ARSQDS

³Business object: CSHQBL

⁴Business object: GENQBC

⁵Business object: INVQPS

⁶Business object: INVQSP

⁷Business object: PORQ7X

⁸Business object: PORQD1

⁹Business object: WIPQ46

¹⁰Business object: WIPQD1

¹¹Business object: WIPQDP

¹²Business object: SORQSP

- The **WAREHOUSE BIN QUERY**¹ business object lets you query information about warehouses and bins from the [WhmBin](#) table.
- The **QOT DOCUMENT FORMAT QUERY**² business object lets you query WIP Factory Documentation information for SRS printing.
- The **QUOTATION DOCUMENT DETAILS QUERY**³ business object lets you query the Quotation Document SRS Document XML.
- The **QOT DOCUMENT DOCUMENT PRINT QUERY**⁴ business object lets you print quotation documents.
- The **ESPRESSO SEARCH CRITERIA QUERY**⁵ business object lets you query search parameters that can be used to build an interface for users to select search information in **SYSPRO Web UI (Avanti)** and **SYSPRO Espresso**.
- The **DFM CONTRACTS QUERY**⁶ business object lets you query DFM contract information held against the [AdmDfmMaster](#) and [AdmDfmEmailConfirm](#) tables.
- The **DFM POLLER SERVICES QUERY**⁷ business object lets you query DFM Folder Poller Services information held against the [DfmServices](#) table.
- The **DFM DOCUMENT QUEUE QUERY**⁸ business object lets you query DFM Document Queue information held against the [DfmQueueDetail](#), [DfmQueueDep](#) and [DfmQueueNonDep](#) tables.
- The **BOT QUERY FUNCTIONS**⁹ business object lets you query skill assemblies from the `\Base\Bot\Skills` folder.

Transaction Objects

- The **AP BALANCE HEALTH FIX**¹⁰ business object lets you correct Accounts Payable imbalances reported by the **AP BALANCE HEALTH CHECK**¹¹ business object.
- The **AR BALANCE HEALTH FIX**¹² business object lets you correct Accounts Receivable imbalances reported by the **AR BALANCE HEALTH CHECK**¹³ business object.

¹Business object: WHMQBY

²Business object: QOTQD1

³Business object: QOTQD2

⁴Business object: QOTQDP

⁵Business object: ESPQSC

⁶Business object: DFMQCO

⁷Business object: DFMQFP

⁸Business object: DFMQTR

⁹Business object: BOTQRY

¹⁰Business object: APSTBF

¹¹Business object: APSQBF

¹²Business object: ARSTBF

¹³Business object: ARSQBF

- The **CASH BOOK BALANCE FUNCTION**¹ business object lets you query corrections identified by the **CASH BOOK BALANCE FUNCTION**² business object and updates balances against the [CshHealthFix](#) and [ApBank](#) tables.
- The **CONVERT SERIALS BY BIN**³ business object lets you convert serials by bin that are used when the **ASSOCIATE SERIALS BY BIN** setup option is enabled.
- The **SOURCING POLICY MAINTENANCE**⁴ business object lets you add, change and delete sourcing policies for preferred suppliers.
- The **INVENTORY SOURCING POLICIES POST**⁵ business object lets you define sourcing policies against a stock code/warehouse and then suggest a preferred supplier when creating a requisition/purchase order for that stock code.
- The **WIP ARCHIVE MIGRATION**⁶ business object lets you migrate all archived job information from XML to SQL tables.
- The **JOB NEST CREATION**⁷ business object lets you create and maintain job nests.
- The **WIP JOB NESTING PROCESSING**⁸ business object lets you process the job nest.
- The **SOR ARCHIVE MIGRATION**⁹ business object lets you migrate archived sales orders from XML to SQL tables ([SorArcMaster](#) and [SorArcDetail](#)).
- The **BOM ARCHIVE MIGRATION**¹⁰ business object lets you migrate BOM structures from archive files to SQL tables ([BomArcParentInfo](#), [BomArcStructure](#), [BomArcOperations](#) and [BomArcNarration](#)).
- The **BOM REPLACE WHERE-USED**¹¹ business object is used by the **Replace Component Where Used** program.
- The **LOT ARCHIVE MIGRATION**¹² business object lets you migrate Lot archive files to SQL tables.
- The **COM TRANSACTION CREATE DATABASE**¹³ business object lets you create SQL databases for both SQL On Premise and Azure environments.

¹Business object: CSHTBL

²Business object: CSHT01

³Business object: INVTC

⁴Business object: INVTSP

⁵Business object: INVTP

⁶Business object: WIPTAM

⁷Business object: WIPTJN

⁸Business object: WIPTNP

⁹Business object: SORTAM

¹⁰Business object: BOMTAM

¹¹Business object: BOMTWU

¹²Business object: LOTTAM

¹³Business object: COMTCD

- The **COM TRANSACTION CREATE DB SCHEMA**¹ business object lets you ignore SQL-only tables that are not in the company database when creating database schema (i.e. ignores system-wide tables, Harmony tables and SRS tables).
- The **COM SET PASSWORD**² business object lets you facilitate the setting of passwords for one or more operators. Affected operators will be required to change their password when next they log in.
- The **DFM CONTRACTS POST**³ business object lets you return information relating to DFM contracts. This object is called from the **Document Flow Manager Setup** program to add and maintains DFM contract records in the [AdmDfmMaster](#) and [AdmDfmEmailConfirm](#) tables.
- The **DFM CONTRACT TRANSACTION PROCESSING**⁴ business object is called from the **SYSPRO 8 Document Flow Manager Queue Poller** service to process a transaction on the SQL Server Queue for a specific DFM contract.
- The **DFM CONTRACT XML POST**⁵ business object lets you add a document for a DFM transaction to the relevant SQL Queue. This business object is called from the **SYSPRO 8 Document Flow Manager Folder Poller** service to add an XML document to the SQL Server Queue for a specific DFM contract.

¹Business object: COMTCS

²Business object: COMTPW

³Business object: DFMTCO

⁴Business object: DFMTQP

⁵Business object: DFMTQU



www.syspro.com

Copyright © SYSPRO. All rights reserved.
All brand and product names are trademarks or
registered trademarks of their respective holders.