

2022 Roadmap Themes

SYSPRO 8

Reference Guide

Published: January 2023



CONTENTS

Roadmap Themes 2022

Improved Control of Internal Operations	1
Improved Organizational Controls	7
Supply Chain and Connected World	10
Information and Intelligence	12
Digital Business Platform	14
Technology Development	16
Integration Support	21

Roadmap Themes 2022

Improved Control of Internal Operations



As globalization continues and access to world markets becomes easier, manufacturing industries are under pressure to remain competitive and improve efficiencies while reducing costs, and being able to deliver their product anywhere in the world at short notice.

These expectations require improved internal controls throughout the manufacturing business. To support this, a number of capabilities are being developed to offer the manufacturing business the required level of internal control.

Espresso Pack Size Scanning

SYSPRO's **Espresso Pack Size Scanning** feature lets you associate a barcode or radio frequency identification (RFID) to different units of measure for an item. Then, using either the **SYSPRO Espresso Missions & Tasks** or **Order Picking** applications, you can scan the item in the warehouse to automatically add the unit of measure quantity to the picking (or moving) quantity (i.e. without having to manually enter the number of units picked).

Program notes

You activate the feature by switching on the **ENABLE PACK SIZE SCAN FOR ESPRESSO** setup option (*Setup Options > Configuration > Distribution > Inventory*).

You assign units of measure to an item using the **Stock Code Barcode Uom Cross-Reference**¹ program. Access to this program and the associated business object (**STOCK CODE BARCODE UOM XREF MAINTENANCE**²) can be secured using eSignatures.

¹Program: INVPSU

²Business object: INVSSU

RMA Credit Note for IBT customer

This feature allows you to more accurately identify a credit note as an inter-branch transfer and apply the correct pricing and ledger integration.

SYSPRO has always applied the pricing and ledger integration logic to the credit note as if the return was based on an IBT. However, because sales order entry allows for billing orders and inter-branch transfers to be invoiced against an IBT customer, this logic was not entirely correct.

This feature increases the accuracy of credit notes raised for IBT customers and improves the auditing, integration and tracking capabilities for an RMA.

Program notes

When a credit note is created for an IBT customer (using the **RMA Issues and Receipts**¹ program) and the RMA is not linked to an existing invoice, then a system message is displayed that prompts you to indicate whether the RMA should be treated as an IBT. You can use eSignatures to control the message option that can be selected.

If you indicate that the RMA is for an IBT, then the credit note is treated as a normal RMA for an IBT customer (i.e. the price equals cost).

If you indicate that the RMA is not for an IBT, then the normal sales price is used and ledger integration is processed like a normal sales transaction.

Work In Progress Transactional Custom Form Fields

This feature increases the flexibility of the **Work in Progress** module by catering for transactional custom form fields. This lets you store additional details against WIP material and labor posting transactions, allowing you to document transaction details and information against the job that will then remain attached as a record against that job. This is useful when recording additional information like specific instructions or quality-related details.

Inventory Transactional Custom Form Fields

This feature increases the flexibility of the **Inventory Control** module by catering for transactional custom form fields. This lets you store additional details against transactions such as movements and receipts and is useful when recording additional information like visible condition, quality and auditing information.

Warehouse Order Policies

This feature extends the **O - COVER SHORTAGES LESS THAN MIN OVERAGES UP TO MAX** order policy to cater for *concurrent* co-products manufactured from a notional part. The policy must be applied to the notional part (i.e. not the co-product) which effectively means that the minimum and maximum levels of the co-product are ignored and replaced by the minimum and maximum levels of the notional part.

¹Program: RMAP20

The (**O - COVER SHORTAGES LESS THAN MIN OVERAGES UP TO MAX**) order policy was introduced in **SYSPRO 8 2021 R2** to allow processing of supplies up to the warehouse maximum level, even though the quantity on hand was above the minimum level. This ensured that stock levels could be increased prior to promotions or anticipated demand.

SRS API - Dispatch Invoices

The SRS API has been updated to cater for automating the invoicing process when using dispatch notes by letting you generate dispatch note invoices.

Program notes:

- The **Sales Order Document Printing** Espresso application lets you generate dispatch notes and dispatch note invoices using the SRS API.
- The **SO DOCUMENT DETAILS QUERY**¹ and **SO DOCUMENT PRINT QUERY**² business objects have been updated to cater for this.

Web Based UI: Product Configurator

SYSPRO's **Product Configurator** module is now available in **SYSPRO Web UI (Avanti)**.

The **Configuration Maintenance**³ program lets you build different configurations for a product, where each variation comprises a set of selection criteria, options, components and operations. The configuration can be saved in the library for subsequent re-use.

Program notes

Once the configuration is built and deployed, the **SYSPRO Web UI (Avanti)Product Configurator Wizard**⁴ application can be accessed from the **Configurator** field or button from within the following programs:

- Sales Order Entry
- Quotations
- Job Entry
- Estimates
- Structures and Routings

¹Business object: SORQD2

²Business object: SORQDP

³Program: CFGPDZ

⁴Program: CFGPC1

Kanban Automated Replenishment

SYSPRO's **Kanban Automated Replenishment** feature extends the Warehouse Management System to provide an automated stock replenishment solution for sales order picking and manufacturing production lines.

Factory Documentation Printing via SQL driver

SYSPRO's document printing architecture has been enhanced to enable the printing of Factory documentation using the SQL driver. Previously, this was only available using the XML driver, regardless of the configuration defined against the document template.

Once you have configured your system to use the SQL driver, you then assign a SQL template to the document format.

SYSPRO Point of Sale

SYSPRO Point of Sale has been enhanced in various ways to improve the following aspects:

Changeable Quantities for Service Charges

The **SYSPRO Point of Sale** capabilities have been enhanced to allow operators to specify a quantity when adding service charge lines. When capturing a transaction, you can now define the quantity required for a *Miscellaneous charge type* service charge with a calculation type of *User defined*.

This not only provides store clerks with the ability to capture a *User defined* service charge with a quantity of more than 1 in a single step, but it also saves them time when adding multiple service charges.

Improved Synchronization Performance

The performance of the **SYSPRO 8 Point of Sale Synchronize Service** has been improved by eliminating unnecessary data synchronization between the main server and offline branches.

Updated Offline Database Scripts

SYSPRO Point of Sale now manages the creation and update of databases required for offline usage, without reliance on **Silverlight**.

SYSPRO Point of Sale API

The **SYSPRO Point of Sale API** service (i.e. **SysproPosApiService** - previously named **POS Engine**) has been updated to support HTTPS communication and to align with industry naming standards.

Multiple UoM Calculations

SYSPRO Point of Sale now includes functionality to manage unit of measure conversions using the **QUANTITY CONVERSION FOR MULTIPLE UOM¹** business object.

This ensures consistent available quantity calculations for lots, bins and serials when selling stock items with multiple unit of measures and that the subsequent sales order allocation and inventory depletion in SYSPRO is handled correctly when posting the sales order to SYSPRO.

This capability allows **SYSPRO Point of Sale** to easily manage the conversion across different unit of measures, eliminating errors typically introduced by manual calculations when working with multiple unit of measures.

Third Party Biometric Scanning

The **SYSPRO Point of Sale** architecture has been enhanced to enable supervisor authorization using biometric scanning.

From the **Branch Settings** program, administrators can select to apply a third party provider's biometric solution for a specific **SYSPRO Point of Sale** branch. Then, during the **Supervisor Authorization** process, the entering of a password is replaced by the request to perform a biometric scan

This capability provides better security and lets you develop your own biometric validation. It also lets third party developers easily integrate with **SYSPRO Point of Sale** at different supervisor authorization points.

Standardized Naming Convention - Contact Numbers

The naming convention within **SYSPRO Point of Sale** has been standardized to eliminate possible confusion relating to the search fields previously referred to as **Contact Number, Cell number, Telephone** and **Additional Telephone**.

Within all searches in **SYSPRO Point of Sale**, the **Telephone** search field has been standardized as **Contact number**, and the **Add Telephone** search field has been standardized as **Cell number**.

Invoice Terms Available on Stationary Format Designs

The **Printing Designer** within **SYSPRO Point of Sale** lets you add customer **Invoice Terms** to all customer-related stationery format designs This aligns with standard business practice to indicate payment terms on your commercial documents (i.e. Invoices, Sales Orders, Credit Notes and Quotes).

The **TermsCode** and **TermsDescription** fields are now available for selection from the **Printing Designer** dictionary under the **Headers** section.

¹Business object: SORQUM

Flexibility for placing items in back order

The **Manage Orders** program in **SYSPRO Point of Sale** now lets you configure your branch or user to automatically place the full quantity of a sales order into back order (matching the **SYSPRO Desktop** version).

Previously, when changing the order quantity for a sales order within the **Manage Orders** program, **SYSPRO Point of Sale** would automatically calculate the ship and back order quantities accordingly. However, now you can use the **Automatically put order qty in b/order** option to automatically put the whole order quantity into back order (or the available quantity into ship and the remainder into back order).

This capability aligns **SYSPRO Point of Sale** with the user preference currently available in the **Sales Order Entry** program, allowing you to manage the back order preference at a line level.

Improved Lead time Calculations

The custom lead time calculation logic within **SYSPRO Point of Sale** now lets you also take into consideration the lead-time days (i.e. **LMWDaysLeadtime**) from the **RegionsWarehouse** table and to cater for Kit-type items.

This offers improved lead time calculations considering the data provided within your custom form fields and ensures that lead-time calculations on kit-type items are performed at component level, with the longest lead-time then applied to the parent item.

Improved Organizational Controls



As the landscape changes, businesses need to focus on improving organizational controls and internal controls.

Improved organizational control will become steadily critical as the business changes and grows, and for improved real-time decision making by the leadership team.

Improved Governance and Customer Experience with Tax Connectors

Avalara tax connector users can now apply the master account's **Avalara** exemption certificate to determine tax for a sub account. This ensures flexibility in tax determination and aligns customers to local tax regulations.

FOR EXAMPLE:

If the master account has an exemption certificate for the state in which the sub account operates, US tax regulations allow for the sub accounts to apply the master account exemption certificate and for the transaction to be treated as non-taxable.

You can now also configure your tax connector to archive files submitted to **Avalara** or **Vertex**, and to retain an audit log of these transactions.

Global Tax Compliance

In order to support tax reporting globally and comply with regulatory requirements, the size of the **Company tax number** and the **Tax registration number** fields have been increased to 30 digits and the following fields were been added to the **Digital Tax Tool** and **Consolidated Tax Return** programs and the **TAX SUBMISSION QUERY**¹ business object to provide insight into the tax status of cross-border sales transactions:

¹Business object: IMPQTS

- Warehouse
- Description of warehouse
- Nationality of warehouse
- Description of warehouse nationality
- Tariff code
- Sales order
- Country or origin
- Nationality description

Control Account Locking

To improve performance and eliminate queuing and roll-backs when processing transactions, new database tables have been created whereby the Inventory, General Ledger, Accounts Receivable and Work in Progress modules obtain next journal numbers and save journal information.

Centralized Payment Processes with Group Payments

SYSPRO's **Group Payments** feature now caters for centralized payments by an organization sharing customers or suppliers across multiple SYSPRO companies. This lets you apply a consolidated customer receipt or supplier payment across multiple customers or suppliers within a payment group.

Benefits include reduced administration through the processing of a single transaction for a consolidated customer receipt (or supplier payment) and the automatic generation of inter-company entries.

Simplifying the customer payment receipt process for multiple customer accounts adds value to the Cash Collection and Customer Credit Management cycle and also helps in producing consolidated AR Statements.

Consolidating payments to groups of suppliers across multiple companies within an enterprise adds value to the Procure-to-Pay business process and supports cash flow planning by providing a consolidated view on future cash requirements.

Dimension Analysis

SYSPRO's **Dimension Analysis** feature extends the product's financial reporting capability by offering you a multi-dimensional detailed view of your financial data and allowing you to slice-and-dice data according to your requirements with minimal effort.

A standardized Chart of Accounts is used and you create dimensions for business segments or reporting categories. These dimensions can then be linked to a business process and appended



to financial transactions and operational data. Data quality and consistency is enhanced as all ledger transactions originating from the same source are tagged against the same dimension category.

Supply Chain and Connected World



The competitive landscape has changed and each manufacturer increasingly faces a requirement to find new and alternative routes to market, as well as being able to better service their current market.

SYSPRO's product roadmap provides capabilities to improve processes to support optimization of the sales and distribution channel as well as aftermarket support for the sale.

Admin Management Capabilities within the Supply Chain Portal

The **SYSPRO Supply Chain Portal** has been enhanced to provide management capabilities to account managers enabling them to maintain which employees at their suppliers and customers have access to the portal. This includes the ability to define the dynamic landing page to determine the features and functionality available to each employee.

The ability to manage your own portal provides administrators and account managers (both Sales and Procurement alike) with an improved user experience, increased configuration flexibility, improved integration and effective portal access security. This leads to increased collaboration and visibility throughout the supply chain and portal users gain access only to those portions of the portal that they require.

In a multi-company environment, the supplier/customer no longer needs to have the same key in all companies from which they transact. SYSPRO Administrators can now link SYSPRO operators to a portal supplier or portal customer (per company) so that they can manage the specific customer and supplier accounts for access to the portal. In addition, account managers can now customize the individual applications availability within the dynamic landing page.

Sales Orders Picking Allocation Override

This feature increases the flexibility of sales order picking by letting you override allocations when items can't be located and to use alternate stock in the warehouse if available. This helps to eliminate bottlenecks and simplifies the picking process.

This typically targets situations where the picker is unable to locate the allocated stock (or stock with earlier expiry dates is found). Instead of having to return to the office, cancel the pick and reallocate, stock can be reallocated on the pick using either the **SYSPRO Desktop** or **SYSPRO Espresso** versions.

Program notes

You activate the feature by switching on the **PICK ALLOCATION OVERRIDE** option against the warehouse.

Stock can be reallocated on the pick using either the **Pick Maintenance¹** program (**SYSPRO Desktop**) or the **Order Picking** and **Missions & Tasks** applications (**SYSPRO Espresso**).

Sales Pricing Engine

Building on the simplified pricing structures implemented in previous releases, SYSPRO's **Sales Pricing Engine** feature is bolstered by a flexible pricing hierarchy that now lets you define priorities and contracts against price rules. Price rules with the highest priority take precedence over other price rules and override the *best price*. When a contract is linked to a price group, it becomes a price rule that is included in the pricing hierarchy.

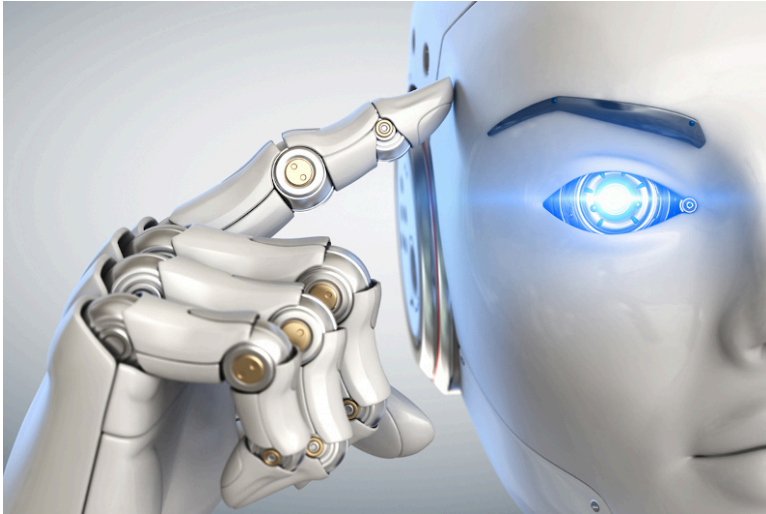
In addition, a status (e.g. active, in review, on hold) can now be defined against a price list and further control is provided over price selection when stock is sold in different units of measure.

To ensure a smooth transition to the revised **Sales Pricing Engine**, the **Price List Conversion²** program lets you convert existing price code configurations (e.g. existing stock code and price code combinations) into price lists.

¹Program: SORPPM

²Program name: SORPLC

Information and Intelligence



Along with the improved controls, a business needs information to function. Digital Transformation is bringing more and more information to the business, but without the tools to manage all of the extra information it adds no value.

SYSPRO adds the key tools to manage and analyze all of the extra information. Augmented Services translates all of the knowledge into an improved customer experience.

Business Insight Tile Builder (Web UI Capability)

The programs typically associated with business insight tiles in the **SYSPRO Desktop** version are now also available in the **SYSPRO Web UI (Avanti)** version. This ensures that tiles can be created, maintained, imported and exported using both versions.

Embedded Analytics

The **SYSPRO Embedded Analytics** feature provides analytical dashboards and visualization capabilities that help you manage core aspects of the business's operations, without needing third-party business intelligence solutions.

As well as supplying you with a business management system that acts as a system of insight, it also empowers SYSPRO users to easily create, customize and deploy dashboards and visualizations anywhere in SYSPRO.

SYSPRO Embedded Analytics lets you transform your current data into visualizations and dashboards, providing decision making analysis to business users and functional roles.

The ability to turn data into powerful, insight-driven experiences dramatically reduces operating costs and increases your visibility of operations. It provides improved decision making and accelerates your time-to-value (without requiring additional development resources or specialist skills).

Business Activity Queries via SYSPRO OData Connector

SYSPRO OData now caters for access to SYSPRO-designed **Business Activity Queries** (i.e. SQL Database view objects prefixed with `ba_`). This extends your ability to retrieve data from a **Business Activity Queries** using the **SYSPRO OData Connector**.

You access **Business Activity Queries** directly from within the SYSPRO ODATA Connector endpoint. While the ODATA Connector URL conventions remain the same, the **Business Activity Queries** are now included in the list of SQL Objects to which you can connect or from which you can retrieve data.

Business Activity Query Import & Export Functions

The **Business Activity Queries** feature (released for the **SYSPRO Desktop** version in **SYSPRO 8 2021 R2**) is now available in the **SYSPRO Web UI (Avanti)** version. In addition, you can now export and import business activity queries in both versions.

The export and import functionality allows you to transfer your business activity queries to multiple SYSPRO instances without having to manually recreate them at each new site, or access SQL to create and manage custom data views.

This lets you develop and test your business activity queries in SYSPRO and then export them, for importing into your live production environment.

Microsoft Edge WebView2 Browser Control

To provide a more responsive browser experience and improve the compatibility with third-party web-based solutions, the **SYSPRO Desktop** web browser capabilities have been enhanced to utilize the latest **Microsoft Edge** browser technologies. This allows for a rich and secure web browser experience within SYSPRO.

Digital Business Platform



A combination of technologies that enables an organization to deliver digital business capabilities, SYSPRO's Digital Business Platform supports any customer organization that needs to build their own platform (or multi-purpose integration hub) to interact with other platforms or integrate all of their disparate systems into a single platform that is integrated directly into SYSPRO.

Application Designer

SYSPRO's **Application Designer** feature is a suite within the SYSPRO core application that partners and customers can use to create new applications for the SYSPRO platform. These applications can in turn be used by end-users to further customize and personalize the application (e.g. add custom form fields, customized panes, etc.).

The **Application Designer** is designed to reduce the complexity of coding by providing a simple interface to the SYSPRO core functionality. It inherits and harnesses all SYSPRO's underlying security, enrichment and flexibility, and leverages the comprehensive library of SYSPRO business logic, UI controls and event handlers.

It lets developers extend the enterprise by creating newly-imagined solutions in both the **SYSPRO Desktop** and **SYSPRO Web UI (Avanti)** versions, saving cost and time in building out new SYSPRO platform solutions, as well as improving productivity and story-boarding.

SYSPRO Web UI (Avanti) Responsive UI Customization

A responsive and limitless design canvas has been introduced to improve the customization and personalization features within the **SYSPRO Web UI (Avanti)** version. This enables you to design or personalize user applications without layout limitations.



In the **SYSPRO Desktop** version, this is equivalent to moving, positioning and resizing docking panes.

The **SYSPRO Web UI (Avanti)** architecture has been re-engineered to remove the column layout restriction and provide a more fluid and responsive design. This lets you position and resize your data objects without column layout style restrictions and allows you to personalize the layout of applications without needing to use the **Visual Designer¹** program.

Visual Designer

The **Visual Designer²** program now provides a fluid design surface without a column layout option/section.

In addition to being able to drag and move data objects on the design surface, you can now also resize them, even when they span sections.

User Personalization

The application view lets you personalize the layout of an application without having to use the **Visual Designer³** program.

In addition to being able to drag and move data objects, you can now also resize them.



You can't remove or add data objects; you can only resize them or place them in different locations.

There is also now a clear differentiation of data objects as they will no longer blend into each other and are fixed in size. If the content is larger than the assigned space, automatic scroll-bars are displayed once you hover over the data object.

The ability to personalize a web view is controlled using the **AVANTI - ALLOW PERSONALIZATION OF WEBVIEWS** security activity (disallowed by default) and can be applied by operator (**Operator Maintenance**) or by role (**Role Management**).



You can also reset your user personalization using the **Reset Layout** option that is available from the **Customize** icon.

Considerations

- To activate moving and resizing, hover over the data object or on the edges of the data object.
- You can't resize a data object from the top, as this area is used for moving it around the page (i.e. when the cursor turns into a hand).
- You can enable a lock icon to prevent further moving or resizing (the icon is displayed in orange when enabled and black when disabled).

¹Program: IMPFRZ

²Program: IMPFRZ

³Program: IMPFRZ

Technology Development



SYSPRO Web UI Enhancements

Increased Functionality

The **SYSPRO Web UI (Avanti)** architecture has been enhanced in various ways to ensure feature parity with the **SYSPRO Desktop**:

Improved Grid Infrastructure

The grid infrastructure and handling of grid cell content within the **SYSPRO Web UI (Avanti)** has been improved in various ways, including:

- Rendering of grid cell content for complex data types has been enhanced.
- Editable grids no longer truncate decimal values.
- You can now re-use grids within the **Payment Cycle Maintenance** program for multiple postings (i.e. when releasing invoices for multiple suppliers) without having to close and re-open the program.
- You can now export grid content to **Excel** and **PDF**, even if the rest of the grid is disabled.
- The scroll position within grids is now restored after you interact with a row and update a grid.
- The following grid templates are now available within the **SYSPRO Web UI (Avanti)**:
 - Inline Address boxes with multiple lines (i.e. AddressPlain)
 - Inline Charts (i.e. LineChart12)

- □ Inline Images
- Inline Thumbnails
- Inline Progress bars (i.e. ProgressBlue)

Customization Management

The **Customization Management** program has been updated so that you can now export and/or import role customizations when using the ***SYSPRO Web UI (Avanti)***.

Enhanced Security and Compliance

Most secure version of SYSPRO 8

From a security perspective, the entire infrastructure of the SYSPRO stack (i.e. ***SYSPRO Web UI (Avanti)***, ***SYSPRO Desktop***, SYSPRO Services, etc.) was placed through complete system and software vulnerability audits, including penetration tests. And as a result, the security of SYSPRO 8 has been bolstered dramatically.

Some of the advancements in this area include:

- Complete HTTPS support within the ***SYSPRO Web UI (Avanti)***, SYSPRO Services and ***SYSPRO Embedded Analytics*** integration.
- No information is sent over clear text anymore. Where previously information was sent in the header, it is now sent in the request body allowing for full encryption of the message.

Improved User Efficiencies

Images Supported within Predictive Search

Your control over search options has been improved by the new **SHOW IMAGES IN PREDICTIVE SEARCH** setup option (*Setup Options > System Setup > System-Wide Personalization*) which is enabled by default. This lets you disable (or enable) the display of key field images (e.g. stock code images) when using the **Predictive Search** functionality in the ***SYSPRO Web UI (Avanti)***.



If you don't require images to be displayed when using the search, then disabling this option can improve the **Predictive Search** performance when displaying your search results.

Maximum data entry length supported for text entry fields

To improve the user entry experience, the ***SYSPRO Web UI (Avanti)*** platform has been enhanced to apply a **MaxLength** property to alphanumeric fields when binding data. This enables you to display data for certain widgets while the system takes the maximum length into consideration.

This **MaxLength** property determines the number of characters that can be used to display data within the **SYSPRO Web UI (Avanti)**. It also controls the number of characters that can be entered for alphanumeric entry fields.



This property doesn't change the existing **Maximum Length** defined against each key field within the **SYSPRO Desktop**.

FOR EXAMPLE:

- You have a branch description that is 15 characters long but the current length is defined as 10 characters.
- You then change the length of this field to be 20 characters within **SYSPRO Desktop**.
- The branch description is then displayed with all 15 characters when this branch information is next loaded.



You can define the **Maximum Length** of your fields within the **SYSPRO Desktop** via the **Field Properties** options, or via the relevant **PRESENTATION LENGTH** setup option.

Search Enhancements

The **SYSPRO Web UI (Avanti)** infrastructure has been enhanced to provide more flexible search capabilities:

- Improved handling of tabs on predictive search enabled fields.
Previously, when tabbing off a predictive search enabled field, you often had to tab twice to move to the next field. This is no longer the case, as tabs are now executed correctly on predictive search fields when nothing has been highlighted yet.
- Support for cross company browsing on forms and searching data across multiple companies.

FOR EXAMPLE:

You can now browse currency data across companies within the **Intercompany Currency Cross Reference** program.

Custom Input Masks

To improve user input and validation, the **SYSPRO Web UI (Avanti)** infrastructure has been updated to allow the application of input masks (i.e. masked text characters) to any form field.

FOR EXAMPLE:

In the **SYSPRO Desktop**, you can define the mask input text to be applied to the **Telephone** form field within a certain program as:

```
(_0_0_0) - _0_0_0_0_0
```

The characters `_0` indicate that this must be entered as a numeric digit.

Therefore, your configuration of these input masks is now retrieved from the **SYSPRO Desktop** and applied accordingly within the **SYSPRO Web UI (Avanti)**.

Access to AR Statements

The infrastructure behind the **Customer Query** program has been updated to support the **SHOW STATEMENTS** function within the **SYSPRO Web UI (Avanti)**. This means that you can now view your AR statements in HTML, as well as download and print them, directly from the **Customer Query** program when using the **SYSPRO Web UI (Avanti)**.

SYSPRO Web UI Scalability

The scalability and performance of the **SYSPRO Web UI (Avanti)** offering has been bolstered by the release of the **SYSPRO Application Gateway** service that, together with **Microsoft Windows** containers, allows a much larger number of users to run on a single application server.

Client-Server Scalability Improvement

The **SYSPRO 8** architecture supports a system environment variable on the SYSPRO Application server that is designed to improve reliability over an extended period.

This resolves connectivity issues, improves performance for **SYSPRO 8** sites with hundreds of concurrent users running **SYSPRO 8** in a client-server environment, and removes the need to periodically reboot your Application server.

Reduced file system usage

As part of the **SYSPRO 8** journey to reduce files being persisted to the file system, you can now store your customized VBScripts (usually stored in the `\Work\VBScripts` folder) within the **SysSettings** table of the system-wide database.

You'll need to enable the **PERSIST OPERATOR UI SETTINGS TO SQL** setup option (*Setup Options > System Setup > System-Wide Personalization*) to cater for this relocation.

This ensures that customization can be retrieved seamlessly in the event of a system crash, or loss of data on the file system, or a pod loss in a **SYSPRO Cloud ERP** environment.

You may notice an increase in the size of your database once you update to **SYSPRO 8 2022**; the increase in size being proportional to the size of the data being migrated from the file system.

Advantages of moving this data from the file system to the database includes:

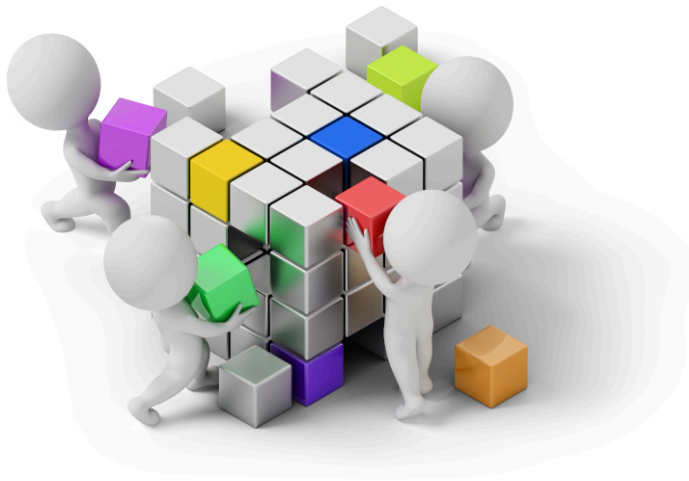
- Centralized access to all related data
- Reduction of file system usage and maintenance
- Simplified portability of data and backup strategy
- Improved performance

Temporary File Handling

System administrators can now configure and manage the folder used to store SYSPRO temporary files.

Selected SYSPRO applications make use of temporary files that are created to store information temporarily - either for a program's temporary use, to transfer information from one program to another, or for transfer to a permanent file or database storage once complete.

Integration Support



Setup Objects

- The **SO PICK ALLOCATION OVERRIDE**¹ business object lets you override a stock item's original bin, lot or serial that was allocated for picking. The updated allocation information is saved in the [SorPickAmendJnl](#) table.
- The **STOCK CODE BARCODE UOM XREF MAINTENANCE**² business object lets you create a cross-reference between a stock code's unit of measure and a barcode or RFID (radio frequency identification) code. This allows the stock item to be scanned in the warehouse.
- The **TPM PRICE MAINTENANCE**³ business object lets you bulk upload TPM price breaks.

Query Objects

- The **STOCK CODE BARCODE UOM XREF LIST QUERY**⁴ business object lets you query cross references that have been defined between a stock code's unit of measure and a barcode or RFID (radio frequency identification) code.
- The **SO PICK AMENDMENT JOURNAL QUERY**⁵ business object lets you query all items that have been changed on a pick line using the data on the [SorPickAmendJnl](#) table.

¹Business object: SORTPA

²Business object: INVSSU

³Business object: TPMSM7

⁴Business object: INVQSU

⁵Business object: SORQPA

Transaction Objects

- The **AP PAYMENT INTEGRATION TO CASH BOOK**¹ business object lets you integrate supplier payment runs to Cash Book as part of SYSPRO's fully-automated supplier payment process. This allows customers to tailor their supplier pay run processing using third party applications and to better manage the approval and execution of big payment runs.
- The **AP EXECUTE PAYMENT**² business object lets you execute a payment run as part of SYSPRO's fully-automated supplier payment process. This allows customers to tailor their supplier pay run processing using third party applications and to better manage the approval and execution of big payment runs.
- The **TAX CONNECTORS AUDIT LOG PURGE**³ business object lets you delete entries from the [AdmTaxAuditLog](#) table according to the purge options defined within the **Tax Interface Setup** program for **Avalara** and **Vertex**. The object is run from the **Tax Connectors Audit Log Purge** program.

The start time, end time and number of entries deleted is output to job logging as a record of purges processed.

- The **SO PICK ALLOCATION OVERRIDE**⁴ business object lets you override a stock item's original bin, lot or serial that was allocated for picking. The updated allocation information is saved in the [SorPickAmendJnl](#) table.

¹Business object: APSTCI

²Business object: APSTPD

³Business object: IMPTPP

⁴Business object: SORTPA



www.syspro.com

Copyright © SYSPRO. All rights reserved.
All brand and product names are trademarks or
registered trademarks of their respective holders.

