

Predictive Search

SYSPRO 8

Reference Guide

Published: May 2021



CONTENTS

Predictive Search

Exploring	1
Starting	2
Solving	3

Predictive Search

Exploring

Where it fits in?

The **Predictive Search** facility in SYSPRO automatically shows suggested search results as you type text into any key field in the product (e.g. stock code, customer, supplier, etc).

The search uses a web service to interrogate the database and return values based on a pre-defined configuration.

Predictive searching helps you get to the information you need effortlessly, by filtering the top records in the database based on what you have already typed. This innovation provides a streamlined process in the selection of records, typically associated with browse or find functions.

Predictive searching is also available for linked tables and custom form tables. Custom form columns can be automatically linked to use predictive searching - the columns only have to be selected, as the joins are done dynamically.

When predictive searching is switched on, it applies to all search and browse functions within SYSPRO.

Starting

Prerequisites

- The **SYSPRO 8 e.net Communications Load Balancer** must be installed and you must configure service address details against the **E.Net Service Details** form within the **System Setup** category of the **Setup Options** program.

Restrictions and Limits

- The predictive search functionality is controlled by the captions on the forms. If a caption matches one of those in the predictive search configuration, then the predictive search is run.

You can't selectively disable the search for standard captions.

- The predictive search on custom forms functionality is only supported for linked tables that have a single column as their key. This key must exist on the primary table.

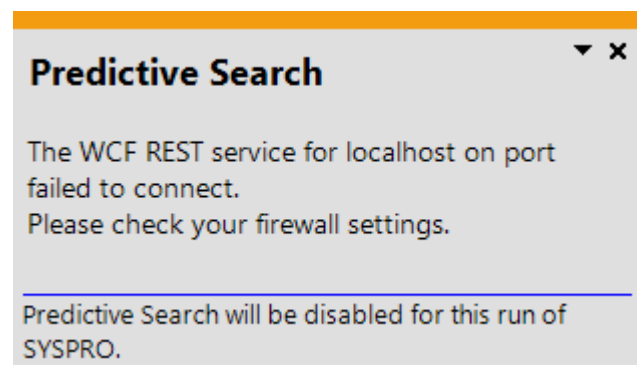
This functionality is not supported for tables that have composite keys.

- The predictive search for the **Non-stocked code** key field applies only to the **Quotations** module. Non-stocked items in **Purchase Orders** and **Sales Orders** are not the same as Non-stocked items in **Quotations**, and aren't saved anywhere.

Solving

Warning messages

Predictive Search



This message indicates that the `REST` port in the **Setup Options** program has not been configured, or is not configured correctly.

Review your settings against the `REST` port field on the **E.Net Service Details** form within the **System Setup** category of the **Setup Options** program.

How do I switch on predictive search?

1. From the **Setup Options** program, navigate to the **System-Wide Personalization** form (*Setup Options > System Setup > System-Wide Personalization*).
2. Enable the **Use Predictive Search** option.
3. Navigate to the **E.Net Service Details** form and define the required details:

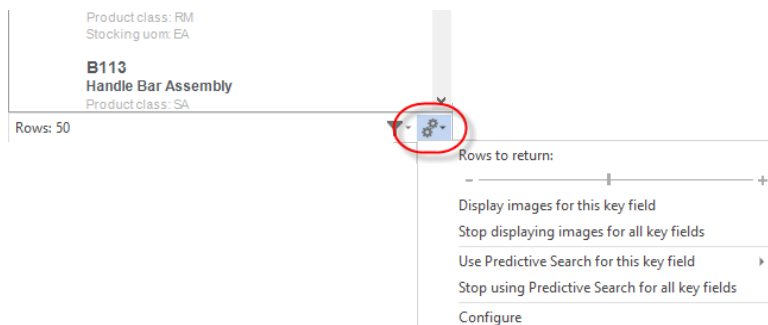
Field	Description
Server name	This is the IP address or server name where the SYSPRO 8 e.net Communications Load Balancer is installed.
SOAP port	This is the SOAP port that has been configured for the SYSPRO 8 e.net Communications Load Balancer .
REST port	This is the REST port that has been configured for the SYSPRO 8 e.net Communications Load Balancer .

4. Navigate to the **Espresso Search Configuration** program (*Program List > SYSPRO Espresso*) and define the key field search configuration parameters required.

These can be used in both the core SYSPRO product and **SYSPRO Espresso**.

How do I configure a key field search?

1. SYSPRO ships with pre-configured key field searches that are available to use.
2. You can configure your own key field predictive searches from within a search field itself, by clicking the **Settings** icon and choosing **Configure** from the shortcut menu that is displayed:



3. You can create new key field searches on SYSPRO tables, as well as linked and custom form tables.

You can also configure predictive search functionality for your own key fields using the **Espresso Search Configuration** program (*Program List > SYSPRO Espresso*).



www.syspro.com

Copyright © SYSPRO. All rights reserved.
All brand and product names are trademarks or
registered trademarks of their respective holders.

