

Installation Guide

2019 R1 | Manufacturing Operations Management

Last Published: August 2019





Contents

How to use this guide.....	3
Internet Information Services.....	4
.NET Framework.....	7
Downloading and Running the Product Updater.....	8
Installing LYNQ aps.....	10
Configuring Visual APS for SYSPRO.....	13
Installing LYNQ mom.....	20
Configuring SYSPRO MOM.....	22
Installing SYSPRO api.....	24
Configuring LYNQ api.....	26
Upgrading LYNQ.....	33
Uninstalling LYNQ.....	34

How to use this guide

The following instructions explain how to install all the components of LYNQ mes. Prior to commencing the installation, you must ensure that the specification of servers, clients and data collection devices (Web Clients) where SYSPRO MES will be deployed to, meet the minimum requirements as detailed in the **System Requirements** document.

To prepare for the installation, it is recommended that you have the following information to hand.

Please note, you must be logged on as a **windows administrator** to perform the install and **User Account Control** must be disabled on each server or client computer.

During the installation of LYNQ, you will be requested for the following information:

Requested Information	Notes
LYNQ License Name	
Web Server Name	
Database Server Name	
SYSPRO Database Name	
LYNQ Administrator Name(s)	

Important Information

LYNQ Licensing Server: LYNQ provides a physical copy of the licence which can be provided during the installation. However if you do not have the physical license file you only need your license name to install LYNQ. When entering your license name the installer will validate your license against the LYNQ licensing server.

LYNQ administrators: When requested to enter administrator names, you must enter your windows user name.

User Account Control: Remember to turn on **User Account Control** after installing LYNQ.

Product Updater: The Product Updater is a proprietary application that has been designed to deliver applications that you are licensed for. If an installation has been customized by the LYNQ team, the Product Updater will provide you with a warning when upgrades are applied. This is to ensure that you are made aware of any changes that may need to be re-applied after the upgrade has finished.

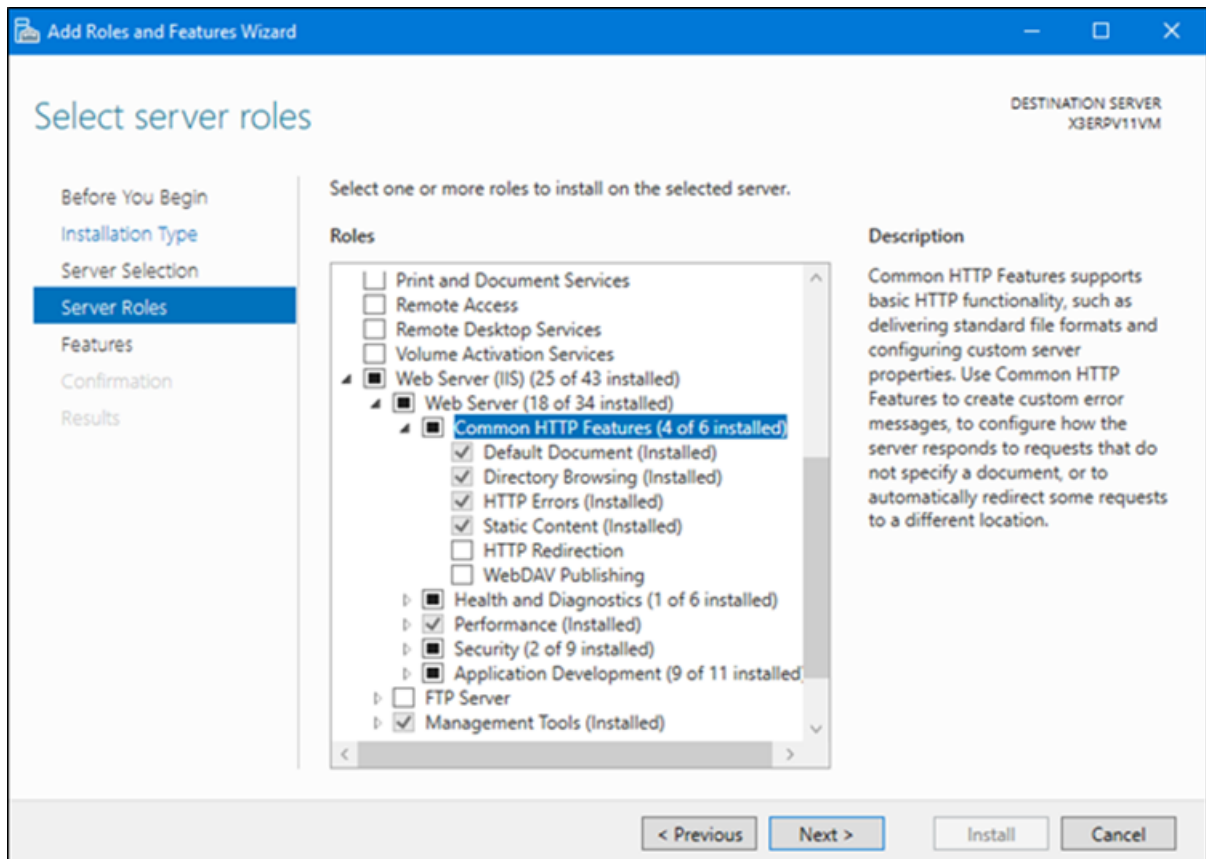
The Product Updater can be saved to a network share so it's easily accessible to all LYNQ users.

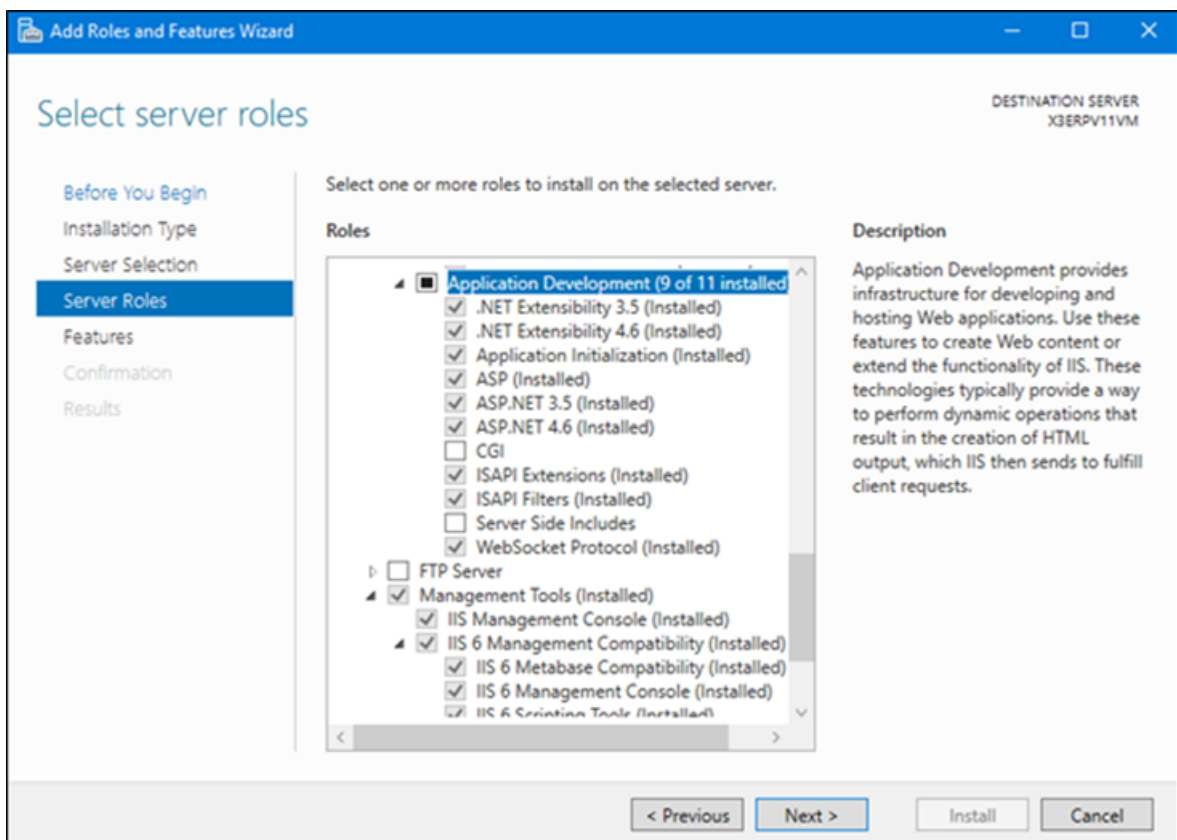
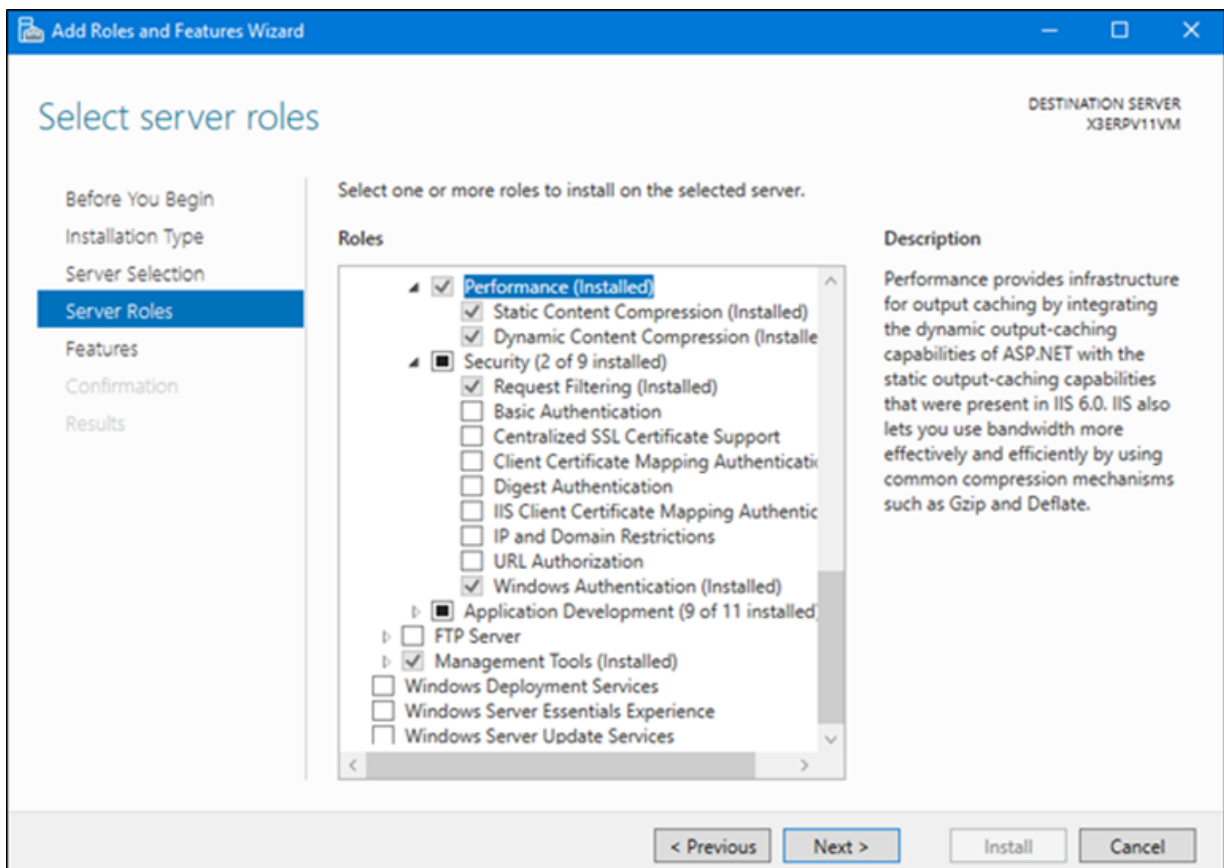
Firewall Rules: The Product Updater does not automatically create firewall rules. Rules must be setup manually.


Internet Information Services


LYNQ mom and LYNQ api are web-based applications and will need to be installed on a server where Internet Information Services is installed. Prior to commencing with this installation ensure the following server roles and features are installed.

Server Roles







 **Note: Local Installations:** For demonstration and training purposes you can install LYNQ on a local computer or laptop. Remember to enable these features prior to your installation. It's likely that none of these features or roles are installed.

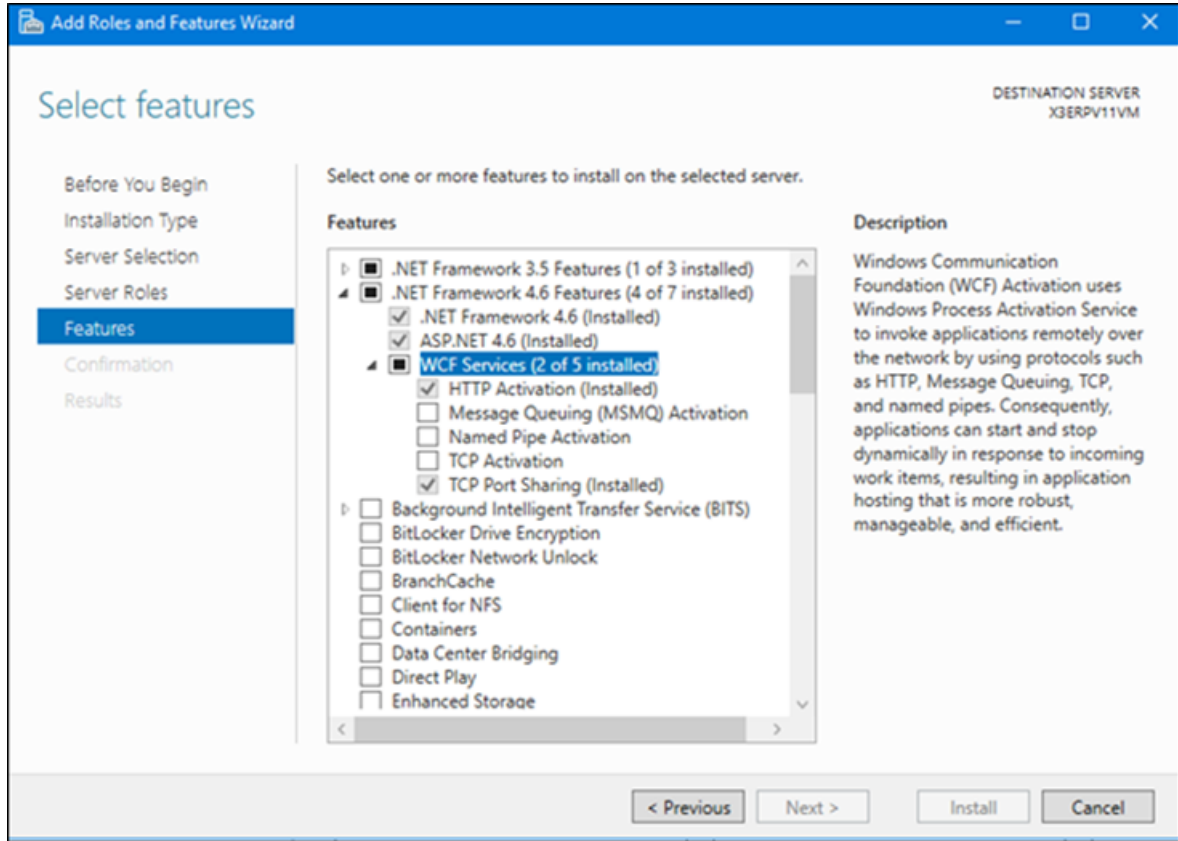
Once all pre-requisites have been installed and you have available all the information in the table in the **How to use this guide** section you are ready to complete the installation of LYNQ.

Authentication

Users of **SYSPRO mom** and **SYSPRO api**, must connect to the web sites using windows authentication. Make sure **Windows Authentication** is enabled in the security section. **SYSPRO MOM** will fail to load if this is not enabled.

.NET Framework

Features



Once all pre-requisites have been installed and you have available all the information in the table in the How to use this guide section you are ready to complete the installation of LYNQ.

Note: **WCF Services:** Failing to enable **HTTP Activation** will prevent LYNQ api from loading. **Remember to enable this feature before you start the installation.**

Downloading and Running the Product Updater

The following steps describe how to download and run the Product Updater.

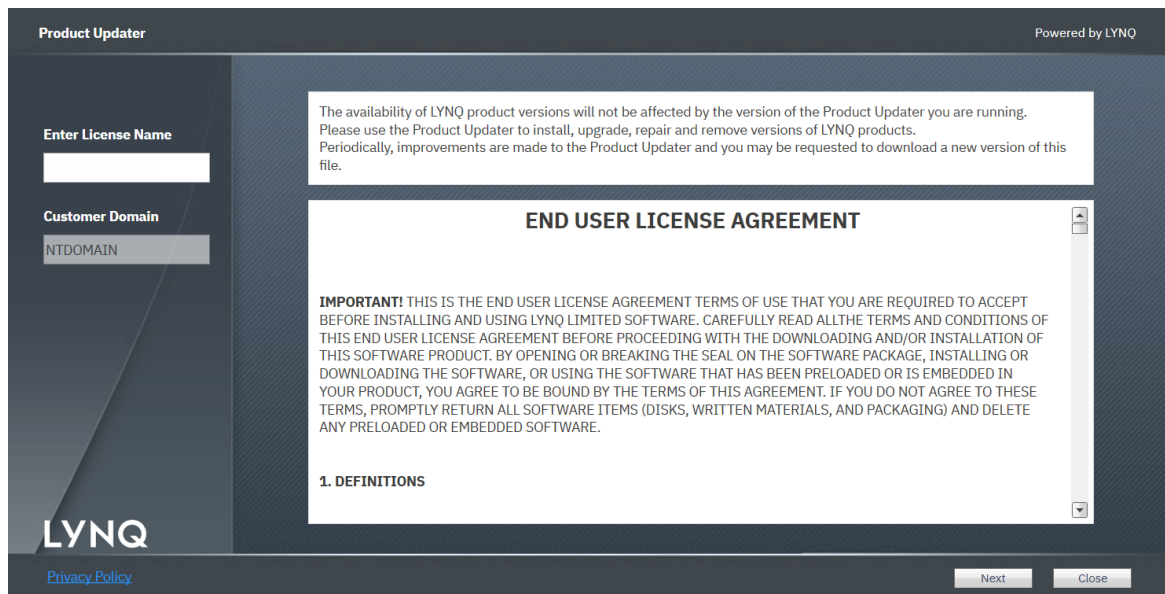
1. Download and extract the **Product Updater.zip** file.

For the latest copy of the Product Updater navigate to <https://support.lynqmes.com/Download/>.

LYNQ generally release a new **Product Updater** every 3-6 months. This is to provide you with the latest updates which may include improvements to the overall UX or technical changes.

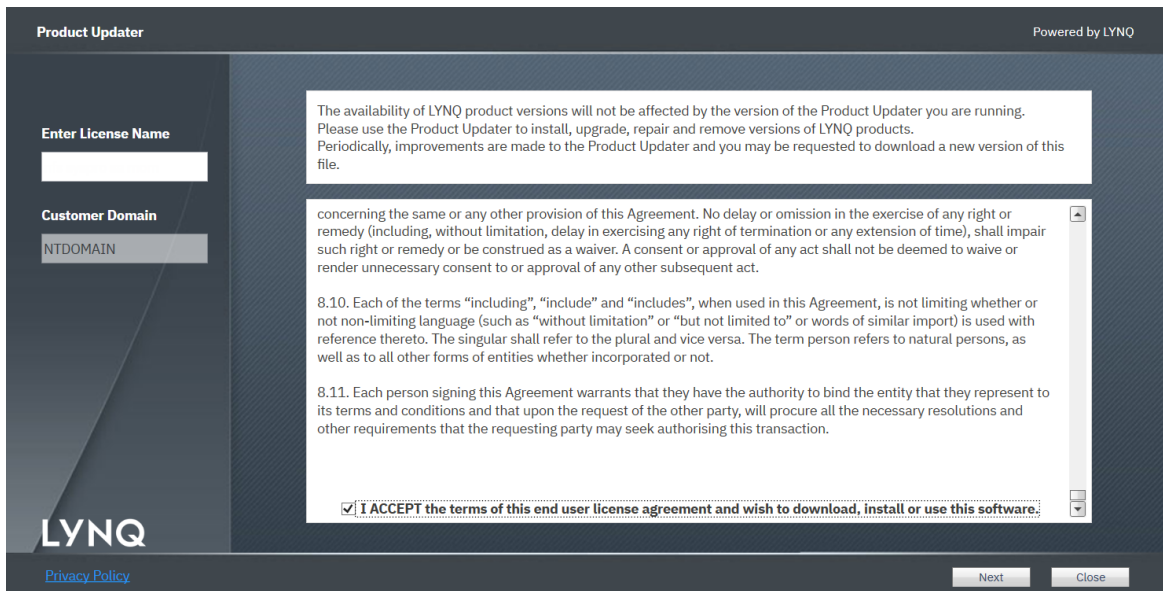
2. Once downloaded right click on the **Product Updater.exe** file and select **Run as administrator**.

The **Product Updater** window is displayed.

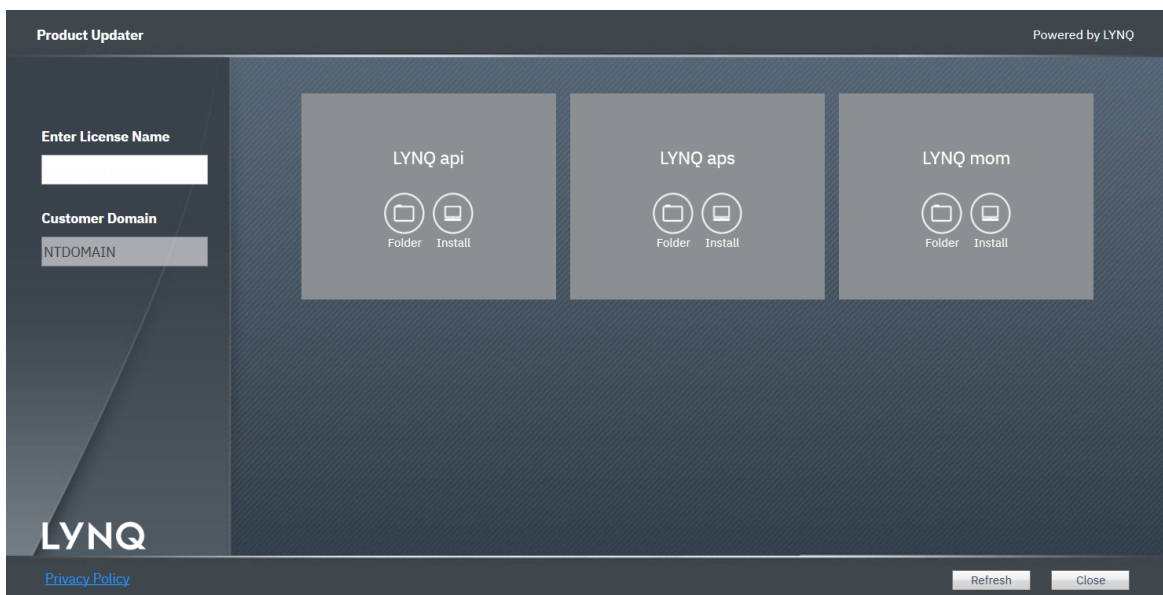


3. Enter your **License Name** and tab.
4. Accept the **License Agreement** and click on Next.

The **Product Updater** window is displayed.



5. The **Product Updater** will show you software that you are licensed for.
The **Product Updater** window is displayed.



6. You are now ready to start installing LYNQ.

Order of components: When installing LYNQ it's best to install the different components in the same order:

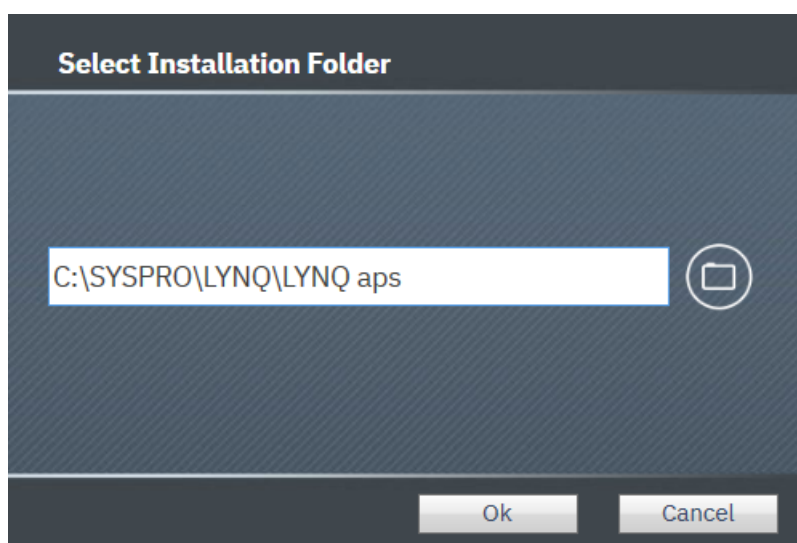
- LYNQ aps
- LYNQ mom and
- LYNQ api

Installing LYNQ aps

The following steps describe how to install LYNQ aps.

1. Logon to the computer with **Administrator rights** (both Windows and SQL).
2. Right click on the **Product Updater** file and select **Run as administrator**.
3. Locate the product **LYNQ aps**.
4. Select an installation path by clicking on the folder button.

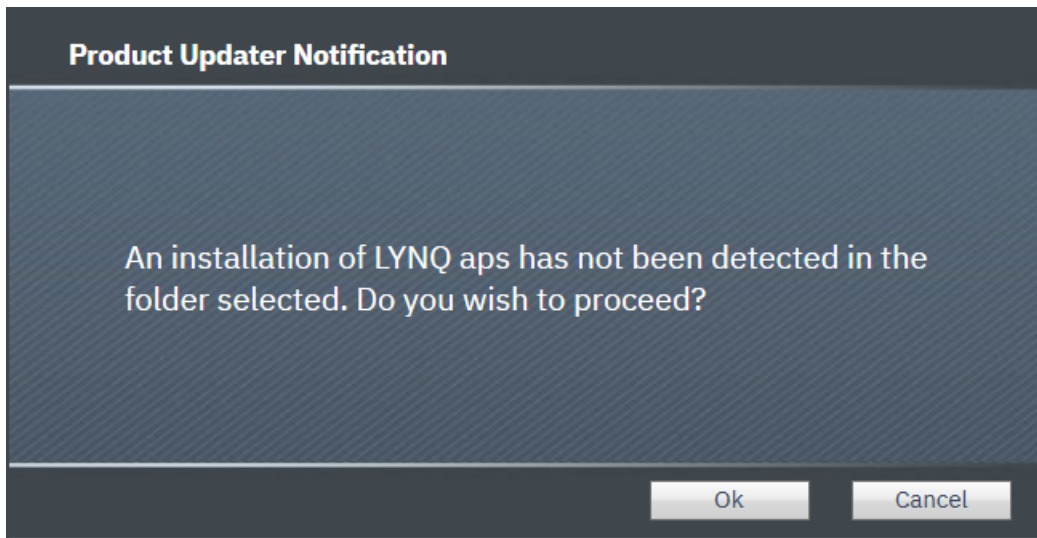
The **Select Installation Folder** window is displayed.



5. Accept the default path or change the path and then select **Ok**.
Change the path to C:\SYSPRO\LYNQ\LYNQ aps. Select Ok.
6. Click **Install**.

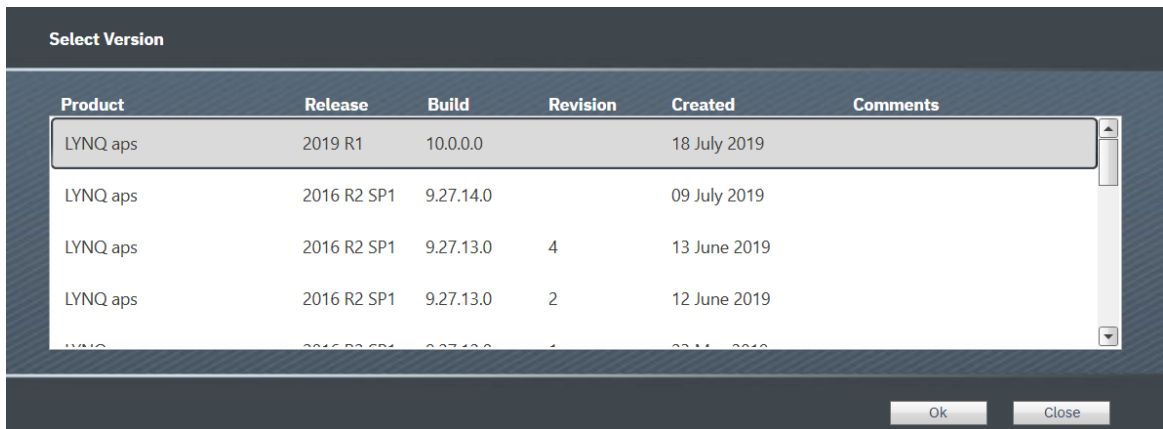
The first time you open a SYSPRO Database with LYNQ aps, a number of SQL objects are created in the SYSPRO Database. This only happens on first use and you must ensure that the user opening the company is a **SQL SysAdmin** user or with equivalent security rights to create **Tables, Views, Stored Procedures** and **Functions**.

The **Product Updater Notification** window is displayed.

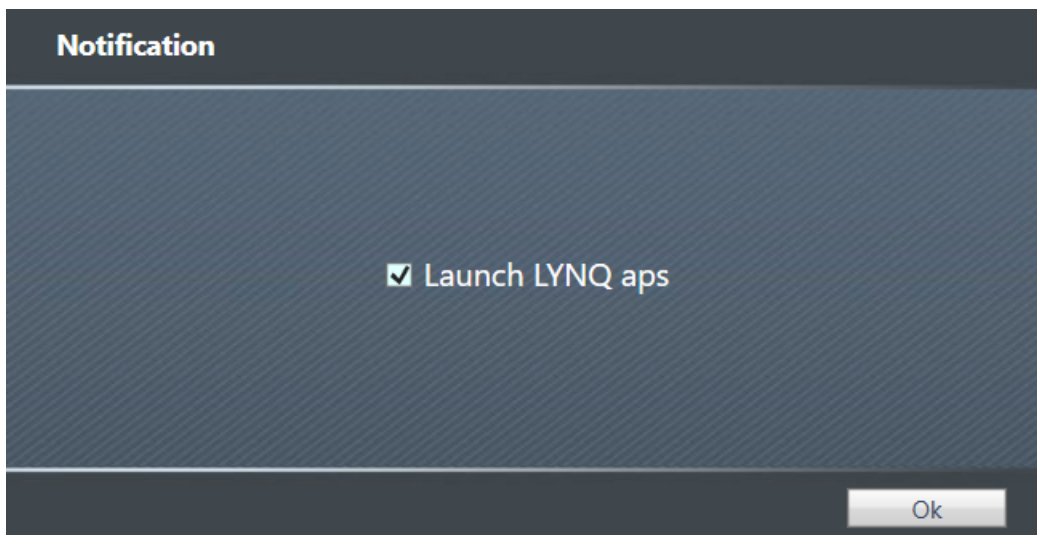



7. Select **Ok** to continue.

The **Select Version** window is displayed.



8. From the product version drop down list, select the latest version and click on **Ok**.
Highlight the row LYNQ aps release 2019 R1 build 10.0.0 dated 18 July 2019.
9. The installation of LYNQ aps will take a few minutes to complete. Once the installation has completed, tick **Launch LYNQ aps**.



- 
10. Click on **Ok**.
You are now ready to configure LYNQ aps.

Configuring Visual APS for SYSPRO

The following steps describe how to configure Visual APS for SYSPRO for the first time.

1. Once Visual APS for SYSPRO has loaded, you may be asked to update your license. The **License Upload** window is displayed.

License Upload Close X

Network domain **NTDOMAIN** * Network domain name is used for license verification, you submitted this information to software vendor on license purchase step

License name * License name is used for license verification, you should have received this information from software vendor on license purchase step

License ID

Expiration Date

Total users

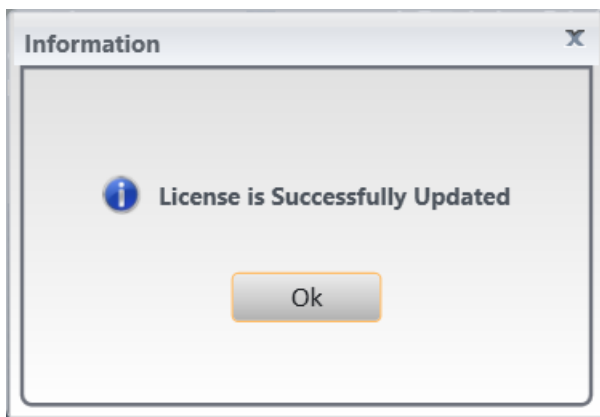
Market

Styling

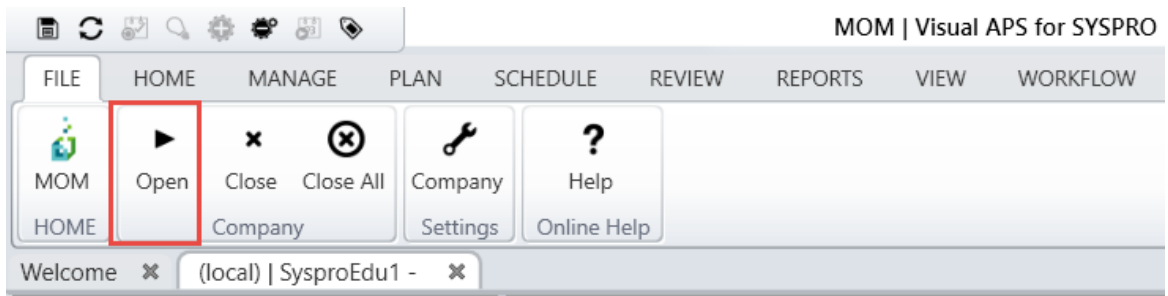
or

2. Enter your **License Name** and click on **Get License Online** and then **Ok**.

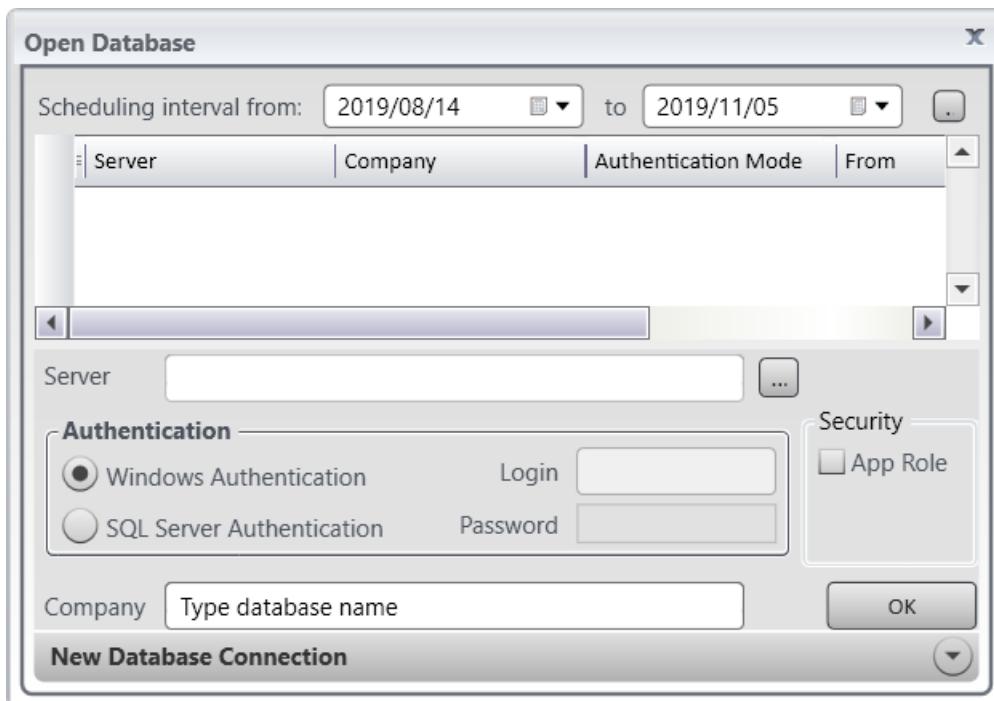
If your **License Name** has been entered correctly, the **Get License Online** will populate all the fields with the required information.



3. The Landing page of **Visual APS for Syspro** is opened.



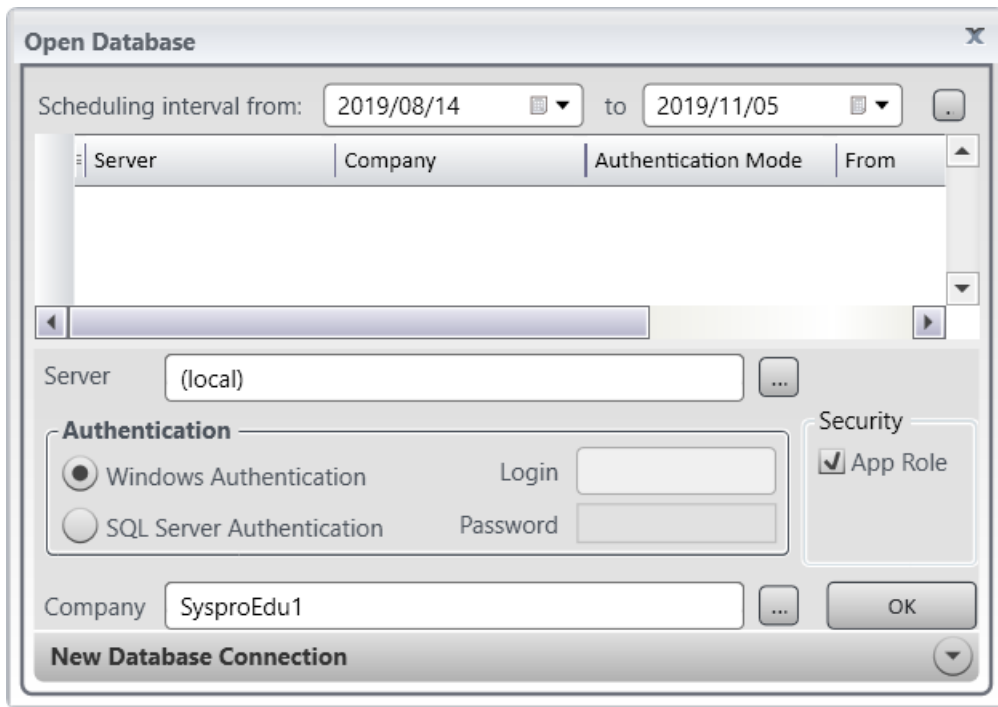
4. Select the **Open Company** option.
The **Open Database** window is displayed.



5. Enter the required details to create a new database connection that enables the program to connect to the SYSPRO Database.
You must open the company with a user that has **SysAdmin** rights.

Server: (enter your name of the SQL Server where the SYSPRO database resides)
Authentication: Windows Authentication or SQL
Company: Set the company name to the correct SYSPRO ERP database.

The **Open Database** window displays the required information entered.



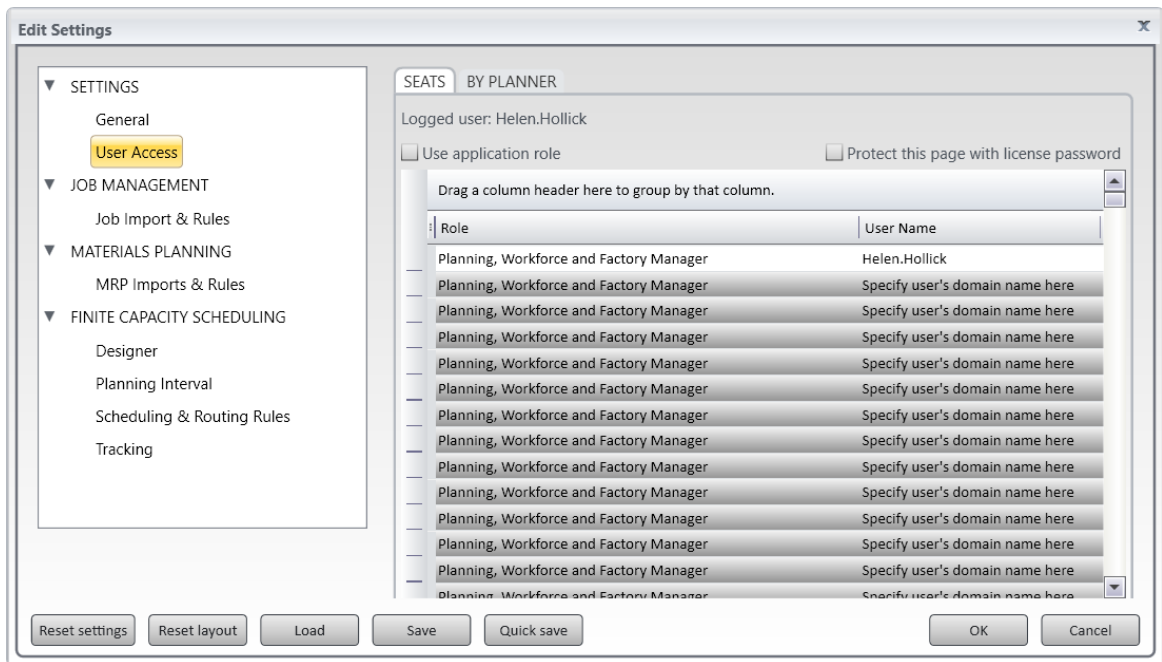
6. Select to **OK**.

The **Visual APS** window is displayed.

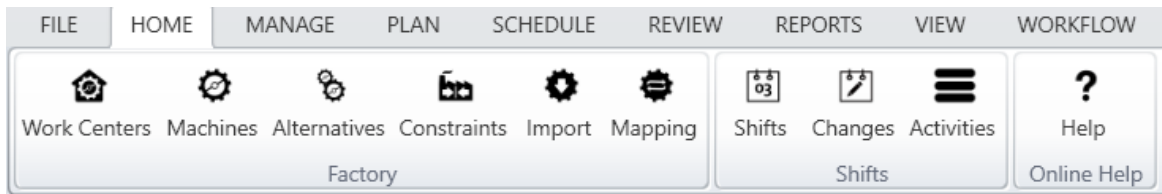


7. Select **Yes** to continue.

The **Edit Settings** window is displayed highlighting **User Access**.



8. Enter the names of the **Windows Users** that will access **Visual APS for SYSPRO**. (Do not enter the domain prefix).
9. Click on the option to **Use the Application Role Object**.
10. Click **OK** when all users have been entered.
You are returned to the **Home** page.
11. The next step in the configuration is to import **Machines**. Click on the **Home** menu and then **Import**.



12. Select the option to **Import Machines**.
Select **Import** and then **Import Machines**.
The **Import Machines** window is displayed.

Import Machines

Infinite Resource

Resources

Resource Type: Machines - Machine Hours

Default Resource Qty: 1

Float Resource Usage:

Float Resource Usage Type: All

Float Discrete Resource Usage:

Min Resource Consumption: 0

Max Resource Consumption: 0

Recommended Load Level(%): 100

Split Task Consumption (Min) 00:00

Split Task Interruption (Max) 00:00

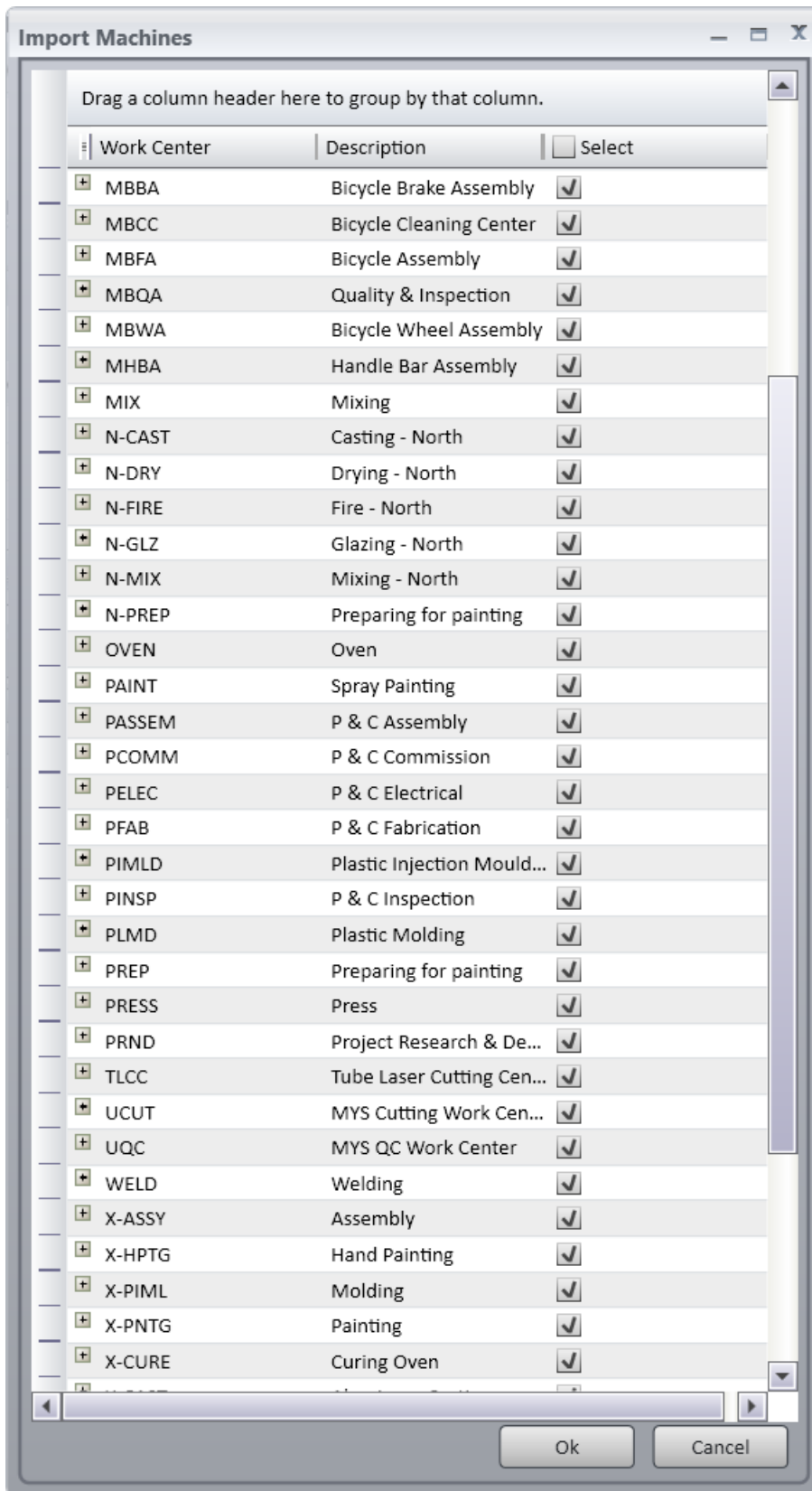
Shifts

Shift: Default - Default Shift

Edit Default Shift Changes


Ok Cancel


13. Set the resource type to **Machine - Machine Hours**.
 14. Select **Ok** to display a list of Machines that are ready for importing.
- The **Import Machines** window is displayed.



 **Note:** You must import at least one Machine during the installation process.

15. Tick the machines you want to import and select **Ok**.

 **Note:** You must install LYNQ aps on all other user's computers by using the **Product Updater**. Once installed you will need to create a new database connection on each computer. For each



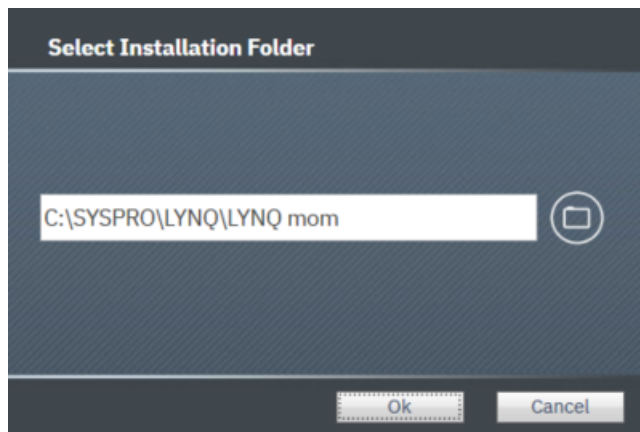
LYNQ aps user, create a windows or SQL login (or use Windows Groups) and update their respective **Login user** mapping settings in **SQL Management Studio** so that the public role for the SYSPRO ERP database is enabled. This will allow the application role setting on the connection screen to work correctly.

Installing LYNQ mom

The following steps describe how to install LYNQ mom.

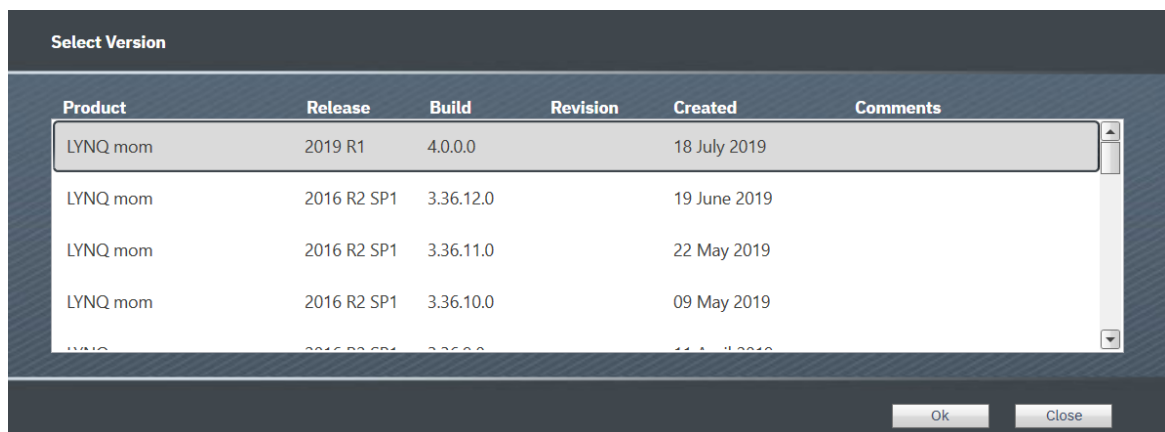
1. From the **Server** where IIS (Internet Information Services) is installed, right click on the **Product Updater** file and select **Run as administrator**.
2. Locate the product LYNQ mom.
3. Select an installation path by clicking on the folder button.

The **Select Installation Folder** window is displayed.



4. Accept the default path or change the path and then select **Ok**.
Change the path to C:\SYSPRO\LYNQ\LYNQ aps. Select Ok.
5. Click **Install**

The **Select Version** window is displayed.



6. From the product version drop down list, select the latest version and click on **OK**.
7. During the installation, you will be presented with the **LYNQ mom Configurator** screen. Enter the following details to configure a new instance of LYNQ mom.

Administrators: Separate multiple administrators with the (;) semi colon character. Administrators have full rights to the application.

Changing Administrators: You can easily change LYNQ mom administrators at a later date by entering the Settings page in LYNQ mom. You must be logged in as an administrator to do this.

Manufacturing Operations Manager Configurator Powered by LYNQ

Site Configuration

Display Name

Site Name

Port Number

LYNQ

Server	Database	SQL User	Password	Create Database	Create User
ERP (local)	SysproEdu1	syspromes	*****	<input type="checkbox"/>	<input checked="" type="checkbox"/>
MOM Data (local) <small>Copy above</small>	MOM EDU1 Data	syspromes	*****	<input checked="" type="checkbox"/>	<input checked="" type="checkbox"/>
MOM Config (local) <small>Copy above</small>	MOM EDU1 Config	syspromes	*****	<input checked="" type="checkbox"/>	<input checked="" type="checkbox"/>
MOM Logic (local) <small>Copy above</small>	MOM EDU1 Logic	syspromes	*****	<input checked="" type="checkbox"/>	<input checked="" type="checkbox"/>
MOM Factory Automation (local) <small>Copy above</small>	IOM EDU1 Automation	syspromes	*****	<input checked="" type="checkbox"/>	<input checked="" type="checkbox"/>
<input checked="" type="checkbox"/> Use MOM Statistics Cache (local) <small>Copy from Data</small>	MOM EDU1 Live	syspromes	*****	<input checked="" type="checkbox"/>	<input checked="" type="checkbox"/>
Cache Period Days 30					

Datasource Type: Administrators (separator *;):

Configuration	Value	Example
Display Name	Your company Name	Company EDU1
Site Name	Web Ste Name	MOM_EDU1
Server	SQL Server	(local)
Database	Database Name	SysproEdu1
SQL User	SQL User Name	syspromes
Password	SQL User Password	Syspromes123
Create Database	Creates User Mapping	Yes for all <u>except</u> ERP DB
Create User	Creates User Login	Yes if the user doesn't exist
DataSource	SYSPRO with Planning	SYSPRO with Planning
Administrators	Windows User Names	Admin1;Admin2;Admin3

8. Click on **OK** to accept the configuration installation.
9. Once installed you can connect to the LYNQ mom site in the browser.

<http://servername:port/sitename>

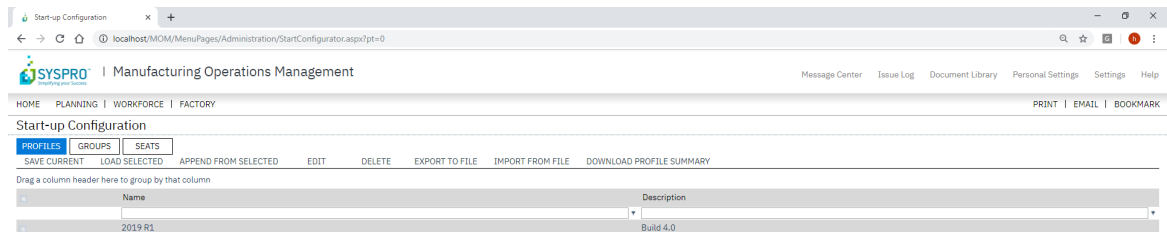
Configuring SYSPRO MOM

The following steps describe how to configure SYSPRO MOM for the first time.

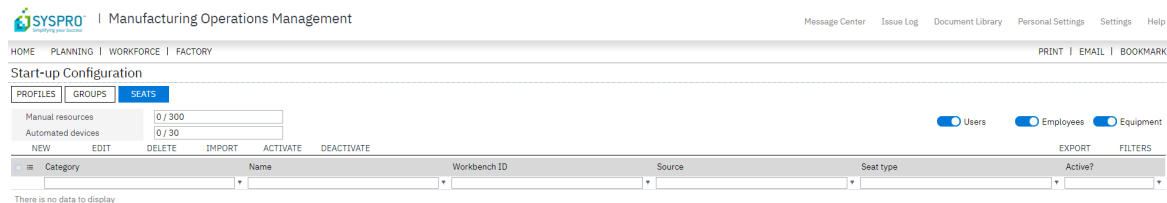
- Once LYNQ mom has loaded you will see the start-up configuration screen and a start-up configuration record should be available for loading.

Start Up Configurator: The Start-Up Configurator provides you with the minimal steps you must complete to be able to fully access LYNQ mom. All configuration of the application is completed in **Advanced Settings**. It's unlikely you will need to go into **Advanced Settings** when you are just installing the software.

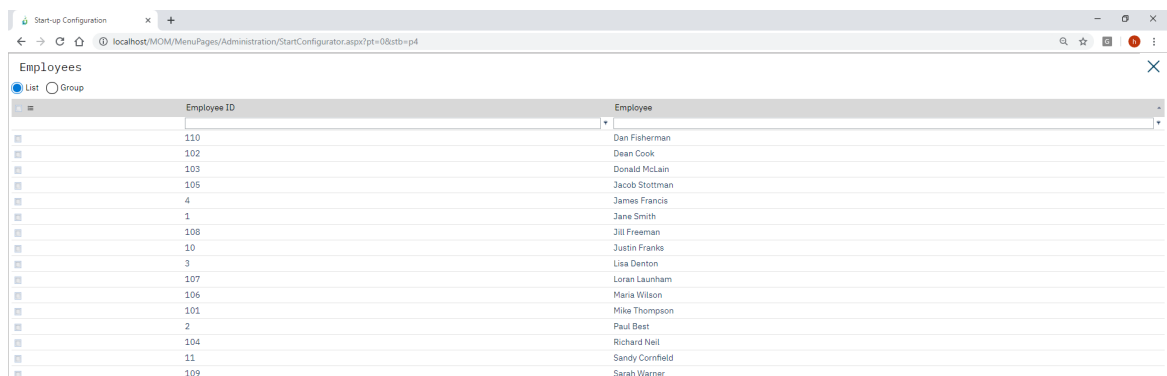
On First Use: The first time you open LYNQ mom, a number of SQL objects are created in the SYSPRO database and in the LYNQ mom databases. This only happens on first use and you must ensure that the user opening LYNQ mom is a SQL SysAdmin user or with equivalent security rights to create Tables, Views, Stored Procedures and Functions.



- Tick the checkbox in the row value and select **LOAD SELECTED**.
- Click **OK**.
- Click on the **Seats** Tab.



- Click **Import**.
- Click **Import Employees**.



- Select the **Employees** from SYSPRO that will be used for data collection purposes.

Select **All**.

8. Click **OK**.
9. Click **Import Equipment**.
10. Select the **Machines** that need to be imported to SYSPRO mom
11. Click **OK**.
12. Select **ALL** imported resources and click **Activate**.

Category	Name	Workbench ID	Source	Seat type	Active?
Employee	Dan Fisherman	110	ERP	Manual	Active - Manual Resource
Employee	Dean Cook	102	ERP	Manual	Active - Manual Resource
Employee	Donald McLain	103	ERP	Manual	Active - Manual Resource
Employee	Jacob Stottman	105	ERP	Manual	Active - Manual Resource
Employee	James Francis	4	ERP	Manual	Active - Manual Resource
Employee	Jane Smith	1	ERP	Manual	Active - Manual Resource
Employee	Jill Freeman	108	ERP	Manual	Active - Manual Resource
Employee	Justin Franke	10	ERP	Manual	Active - Manual Resource
Employee	Lisa Denton	3	ERP	Manual	Active - Manual Resource
Employee	Loran Launham	107	ERP	Manual	Active - Manual Resource
Employee	Maria Wilson	106	ERP	Manual	Active - Manual Resource
Employee	Mike Thompson	101	ERP	Manual	Active - Manual Resource
Employee	Paul Best	2	ERP	Manual	Active - Manual Resource
Employee	Richard Neil	104	ERP	Manual	Active - Manual Resource
Employee	Sandy Cornfield	11	ERP	Manual	Active - Manual Resource
Employee	Sarah Warner	109	ERP	Manual	Active - Manual Resource
Equipment	ABC_AS / ABC_AS	M_1	ERP	Manual	Active - Manual Resource

13. Now go to **Workforce, Workbench**.
14. Select the **Advanced Terminal**.
15. Enter one of the employee codes that you have imported in step 7.
Enter **110** as the **Employee** code.
16. Click **Login**.
17. If you have managed to setup resources correctly you should see a start day option.

Installing SYSPRO api

The following steps describe how to install SYSPRO api.

1. From the Server where IIS (Internet Information Services) is installed, right click on the **Product Updater.exe** file and select **Run as administrator**.

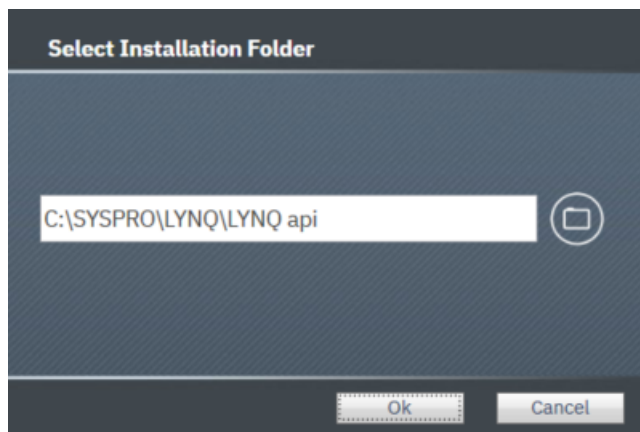
On First Use: The first time you open SYSPRO api, a number of SQL objects are created in the SYSPRO database and in the LYNQ api databases. This only happens on first use and you must ensure that the user opening SYSPRO api is a SQL SysAdmin user or with equivalent security rights to create Tables, Views, Stored Procedures and Functions.

Administrators: Separate multiple administrators with the (;) semi colon character. Administrators have full rights to the application.

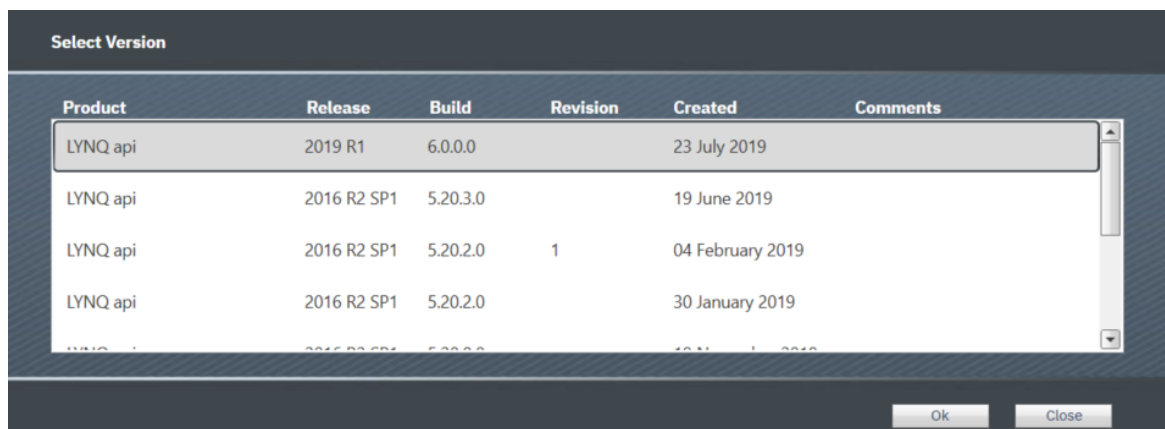
Changing Administrators: You can easily change LYNQ api administrators at a later date by entering the Roles Administration page in LYNQ api. You must be logged in as an administrator to do

2. Locate the product **LYNQ api**.
3. Select an installation path by clicking on the folder button and **Ok** to continue.

It is recommended to use a path of C:\SYSPRO\LYNQ\LYNQ api. This way software relating to the SYSPRO install is in the same area.



4. Click **Install**.
5. From the product version drop down list, select the latest version and click on **OK**.



6. In a few minutes the configurator window will appear.

LYNQ api configurator

Internet Information Services (IIS)
 Version: 10.0
 Site Name: lynqapi
 Port: [dropdown]

Database Configuration
 Server: helenho
 Database: [text box]
 Login: [text box]
 Password: [text box]
 Create Database:
 Create User:

Application Pool Recycling
 Shutdown Time Limit (seconds): 300
 Regular Time Interval (minutes): 1740
 Specific Recycle Time:

Site Configuration
 Last Connections Count: 1
 Administrator (separator ";"): helen.hollick

Run site **OK** Cancel

7. Enter the correct values using the image and table below as a guide.

LYNQ api configurator

Internet Information Services (IIS)
 Version: 10.0
 Site Name: lynqapi
 Port: 80

Database Configuration
 Server: helenho
 Database: LYNQapi
 Login: syspromes
 Password: [masked]
 Create Database:
 Create User:

Application Pool Recycling
 Shutdown Time Limit (seconds): 300
 Regular Time Interval (minutes): 1740
 Specific Recycle Time: 01:00

Site Configuration
 Last Connections Count: 1
 Administrator (separator ";"): helen.hollick

Run site **OK** Cancel

8. Click **OK**.
9. To complete install of LYNQ api move on to **Configuring SYSPRO api**.

Configuring LYNQ api

The following steps describe how to configure LYNQ api.

- ⚠ You can load the LYNQapi site by typing **http://servername:port/sitename** .
- 📄 **Note:** If you installed the site on port 80 you do not need to specify the port in the URL.

1. Connect to the LYNQ api site.

Type in **http://localhost/lynqapi**

The **LYNQ** Licencing test window is displayed.

LYNQ INSTANCE NOT SELECTED

Licensing Licensing test

Customer * Customer name is used for license verification, you should have received this information from software vendor on licence purchase step

Domain * Domain name is used for license verification, you submitted this information to software vendor on licence purchase step

or

License ID

Expiration

Market

Release

Build

Roles

Users

2. Enter your **Customer** name and select **Get Licence Online**.

The **Licensing** window is updated with your licensing information.

SYSPRO INSTANCE NOT SELECTED

Instance Settings Licensing test

Parameter Settings Customer * Customer name is used for license verification, you should have received this information from software vendor on licence purchase step

User Settings Domain * Domain name is used for license verification, you submitted this information to software vendor on licence purchase step

Licensing or

Roles Administration License ID

Modules License Password

Expiration

Market

Release

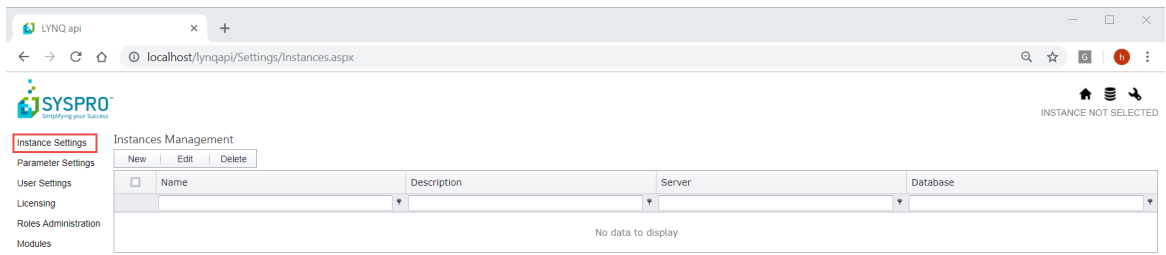
Build

Roles

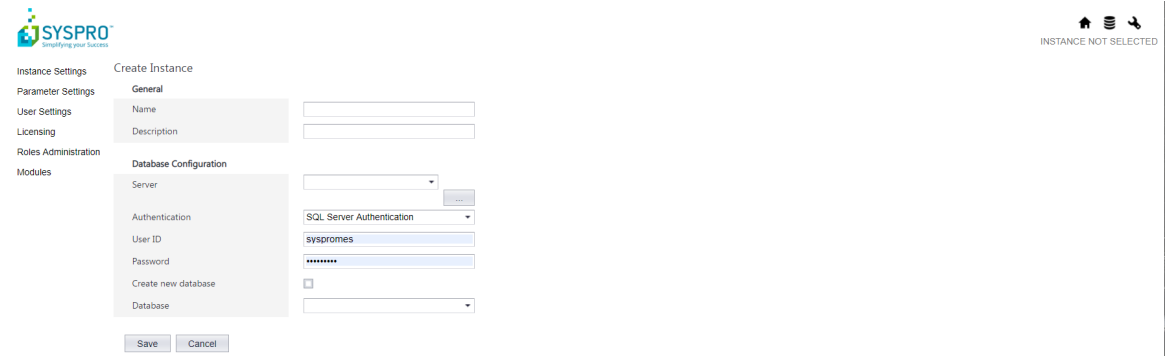
Users

3. Click on **Instance Settings**.

The **Instances Management** information is displayed.



- Click on **New**.
The **Create Instance** information is displayed.



Instance Configuration	Value
Name	Name of your SYSPRO Company
Description	Description of your SYSPRO Company (optional)
Server	SQL Server
Authentication	SQL Server Authentication
SQL User	SQL User Name (as created earlier)
Password	SQL User Password
Create New Database	No
Database	Your SYSPRO Database

- Enter the required information and select **Save**.
The **Create Instance** window is displayed showing the fields populated with information for our training environment.

Instance Settings **Create Instance**

Parameter Settings **General**

User Settings Name MOM

Licensing Description MOM Training

Roles Administration

Modules

Database Configuration

Server (local) ...

Authentication SQL Server Authentication

User ID syspromes

Password

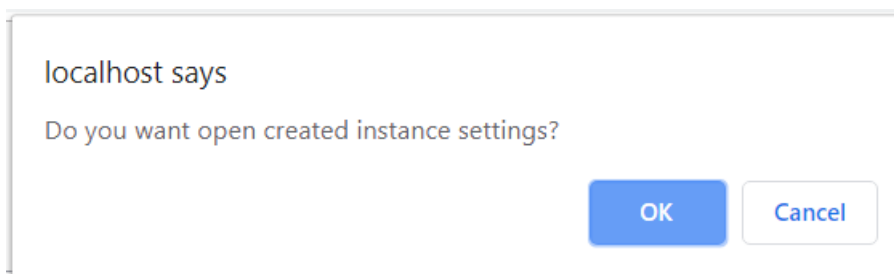
Create new database

Database SysproEdu1

Save Cancel

6. Select **Save**.

The *localhost says - Do you want to open created instance settings?* window is displayed.

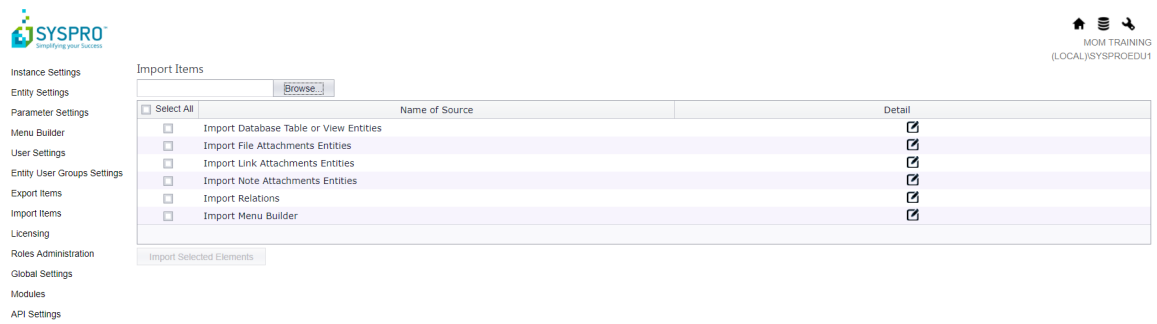


7. Select **OK** to open the Instance.

8. Click on **Browse**.
9. Select the **C:\SYSPRO\LYNQ\LYNQ api\Profiles**.
10. Select the **LYNQ** profile for **SYSPRO.xml** file.

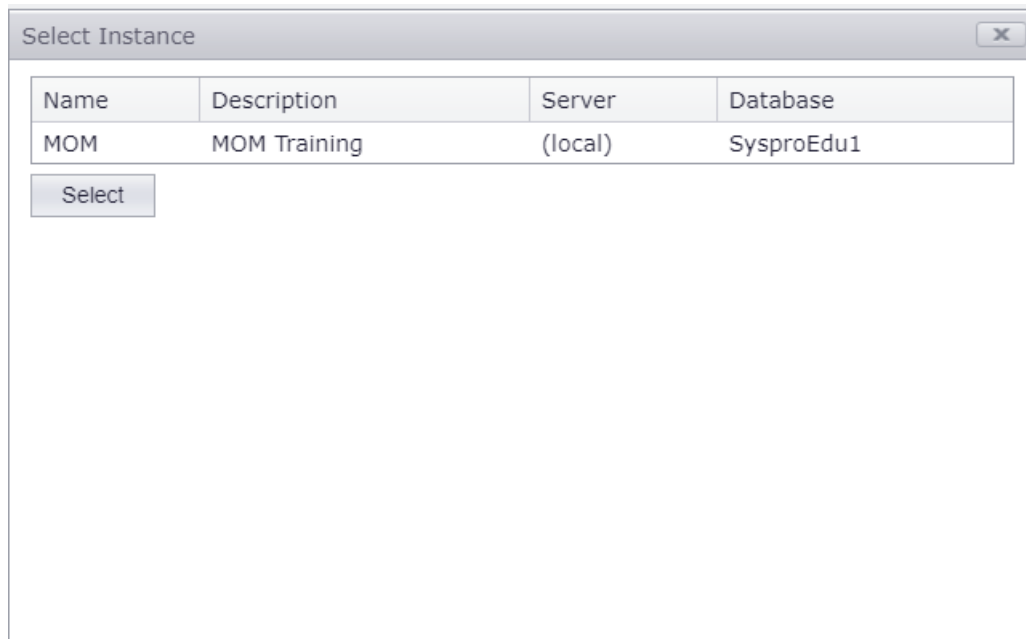
11. Click **Open**.

The **Import Items** information is displayed.



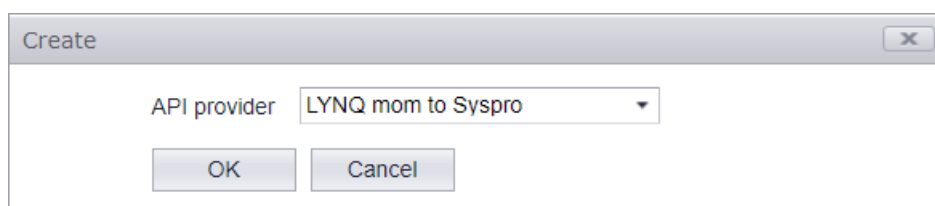
12. Click **Select All**.
13. Click **Import Selected Elements** Items.
14. Click on the **Instance** Icon.

The **Select Instance** window is displayed.



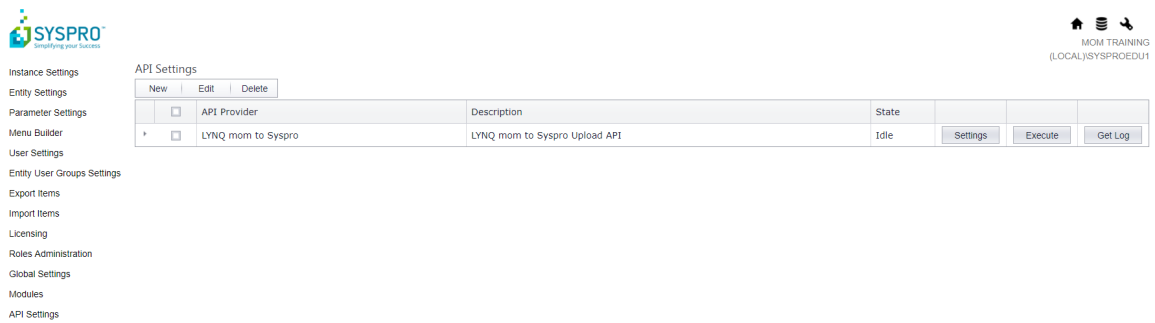
15. Select the instance and click **Select**.
16. Click on **API Settings**.
17. Click **New**.

The **Create** window is displayed.

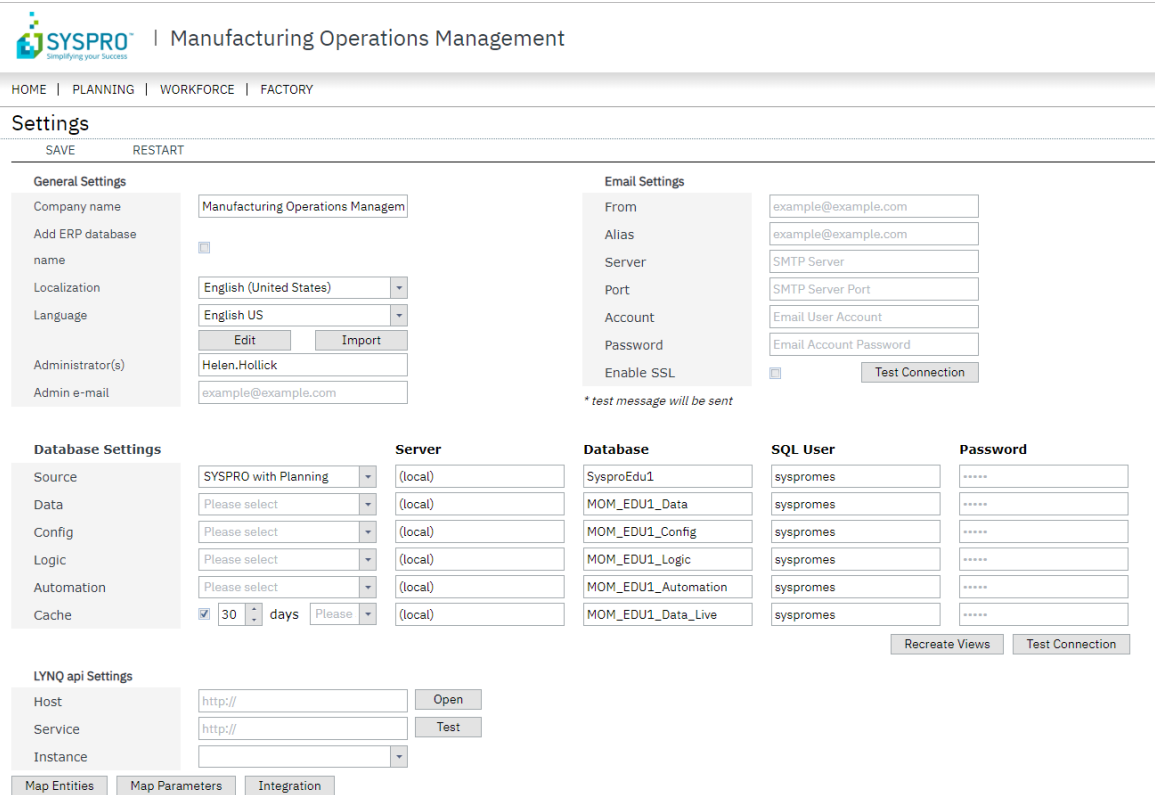


18. Accept the **API provider** and click on **OK** to continue.

The **API Settings** window is displayed.



19. Double click on the **API Provider** to edit **settings**. Enter the correct values using the image and table below as a guide:



Integration Settings	Value
Services Settings	Settings for SYSPRO API
General Settings	As required
ERP to MOM Settings	Settings for LYNQ mom
Transaction Types	Select Transaction Types to post to SYSPRO
Operation Quantity Settings	Select if a Job Receipts are allowed
Job Receipt Settings	As required
Scrap Settings	Select default scrap settings
Status Settings	Select status change settings
Non Productive Time Settings	Select whether NON Productive time is enabled
Equipment Time Settings	Select default Equipment Time Setting

- In the **integration** settings section enter the address for your LYNQ api instance (i.e. `http://servername:port/lynqapi` in the host field. Enter `http://servername:port/lynqapi.services` in the services field.
- Click on **Test** and then select the instance for **SYSPRO**.

The **Manufacturing Operations Management** page is displayed.

SYSPRO | Manufacturing Operations Management

HOME | PLANNING | WORKFORCE | FACTORY

Settings

SAVE RESTART

General Settings

Company name: Manufacturing Operations Managem

Add ERP database name: []

Localization: English (United States)

Language: English US

Administrator(s): Helen.Hollick

Admin e-mail: example@example.com

Email Settings

From: example@example.com

Alias: example@example.com

Server: SMTP Server

Port: SMTP Server Port

Account: Email User Account

Password: Email Account Password

Enable SSL: []

Test Connection

** test message will be sent*

Database Settings

Source	Server	Database	SQL User	Password
SYSPRO with Planning	(local)	SysproEdu1	syspromes	*****
Please select	(local)	MOM_EDU1_Data	syspromes	*****
Please select	(local)	MOM_EDU1_Config	syspromes	*****
Please select	(local)	MOM_EDU1_Logic	syspromes	*****
Please select	(local)	MOM_EDU1_Automation	syspromes	*****
Cache: [x] 30 days	(local)	MOM_EDU1_Data_Live	syspromes	*****

Successfully connected

Recreate Views Test Connection

LYNQ api Settings

Host: http://localhost/lynqapi [Open]

Service: http://localhost/lynqapi.Services [Test]

Instance: Syspro Company Edu1

Map Entities Map Parameters Integration

Successfully connected

- Select **Save to Restart the Site**.

Confirmation

Confirmation

Changes in this screen will require restart of the application. Please confirm...

CANCEL OK

- You can easily test the integration from **LYNQ api** by clicking on **Execute** from the **API Setting Menu**. Use the **Get Log** option to test your service settings are correct.

API Settings		Description	State			
<input type="checkbox"/>	API Provider					
<input type="checkbox"/>	LYNQ mom to Syspro	LYNQ mom to Syspro Upload API	Idle	Settings	Execute	Get Log

LYNQ mom to Syspro

[Refresh](#) | [Delete](#) | [Clear All](#)

Drag a column header here to group by that column

<input type="checkbox"/>	Details	Created Date	Item	Operation	Type	Error Message
<input type="checkbox"/>	Details...	15/08/2019 17:03	Upload LYNQmom	LYNQ mom to Syspro		Uploading process has been finished successfully
<input type="checkbox"/>	Details...	15/08/2019 17:03	Upload LYNQmom	LYNQ mom to Syspro		Uploading process has been finished successfully
<input type="checkbox"/>	Details...	15/08/2019 17:00	Upload LYNQmom	LYNQ mom to Syspro		Uploading process has been finished successfully
<input type="checkbox"/>	Details...	15/08/2019 16:56	Upload LYNQmom	LYNQ mom to Syspro		Uploading process has been finished successfully
<input type="checkbox"/>	Details...	15/08/2019 16:52	Upload LYNQmom	LYNQ mom to Syspro		Uploading process has been finished successfully
<input type="checkbox"/>	Details...	15/08/2019 16:49	Upload LYNQmom	LYNQ mom to Syspro		Uploading process has been finished successfully
<input type="checkbox"/>	Details...	15/08/2019 16:44	Upload LYNQmom	LYNQ mom to Syspro		Uploading process has been finished successfully
<input type="checkbox"/>	Details...	15/08/2019 16:39	Upload LYNQmom	LYNQ mom to Syspro		Uploading process has been finished successfully
<input type="checkbox"/>	Details...	15/08/2019 16:35	Upload LYNQmom	LYNQ mom to Svspro		Uploading process has been finished successfully


[First](#) | [Prev](#) | Page 1 of 1 | [Next](#) | [Last](#) | Showing 1 - 9 items of 9

[Create Filter](#)

Upgrading LYNQ

The following steps describe how to upgrade LYNQ.

1. You must use the **Product Updater** to upgrade the components of LYNQ. You must run the Product Updater on the computer or server where **LYNQ** is installed. Before upgrading any of the components of LYNQ, it's best to ensure all users are clocked out. You can temporarily stop the **LYNQ** application pools in **Internet Information Services** to prevent users from clocking into **LYNQ** whilst the upgrade is being performed.
2. Right click on the **LYNQ Product Updater** file and select **Run as administrator**.
3. Enter your **LYNQ License Name**.
4. Accept the **License Agreement**.
5. Locate the product that you want to update.
6. Click on **Update**.
7. If presented with a configurator screen you can ignore and click **cancel**.
8. Open the product once the upgrade is complete to finalize the upgrade.

 **Note:** When upgrading LYNQ aps, LYNQ tables will be updated in the SYSPRO ERP Database with the version number that has been installed. You must upgrade all other computers and servers running LYNQ aps after upgrade. Failure to do so will result in a version mismatch error.

Uninstalling LYNQ

The following steps describe how to uninstall LYNQ

1. You must use the Product Updater to uninstall the components of LYNQ. You must run the Product Updater on the computer or server where LYNQ is installed.
2. Right click on the **LYNQ Product Updater** file and select **Run as administrator**.
3. Enter your LYNQ License Name.
4. Accept the License Agreement.
5. Locate the product that you want to uninstall
6. Click on Remove



Note: When removing LYNQ applications, database files associated with the applications are not deleted automatically. You must delete these manually using the SQL Management Studio if you want to remove these