

# SYSPRO 8

## How do I address screen scaling issues?

Last Published: January 2020



## SYSPRO Help and Reference

Copyright © 2020 SYSPRO Ltd

All rights reserved

No part of this document may be copied, photocopied, or reproduced in any form or by any means without permission in writing from SYSPRO Ltd. SYSPRO is a trademark of SYSPRO Ltd. All other trademarks, service marks, products or services are trademarks or registered trademarks of their respective holders.

SYSPRO Ltd reserves the right to alter the contents of this document without prior notice. While every effort is made to ensure that the contents of this document are correct, no liability whatsoever will be accepted for any errors or omissions.

This document is a copyright work and is protected by local copyright, civil and criminal law and international treaty. This document further contains secret, confidential and proprietary information belonging to SYSPRO Ltd. It is disclosed solely for the purposes of it being used in the context of the licensed use of the SYSPRO Ltd computer software products to which it relates. Such copyright works and information may not be published, disseminated, broadcast, copied or used for any other purpose. This document and all portions thereof included, but without limitation, copyright, trade secret and other intellectual property rights subsisting therein and relating thereto, are and shall at all times remain the sole property of SYSPRO Ltd.

# Contents

---

|   |          |
|---|----------|
| <b>SYSPRO 8 and DPI Settings .....</b>          | <b>3</b> |
| <b>Using Avanti.....</b>                        | <b>4</b> |
| <b>Using the classic SYSPRO interface .....</b> | <b>5</b> |
| 100% Scale .....                                | 5        |
| 125% Scale .....                                | 6        |
| 150% Scale or higher .....                      | 7        |
| Possible Remedy .....                           | 9        |



# SYSPRO 8 and DPI Settings

---

SYSPRO 8 works correctly and as expected with modern Windows operating systems.

However, various versions of Windows server and client operating systems have different settings which determine how objects are displayed, especially when you choose to change your display settings to anything other than the default options.

Factors that affect how SYSPRO is displayed include:

- **Scale and layout** settings (accessible from your computer's display settings)
- **Resolution** settings (accessible from your computer's display settings)
- Your actual hardware (monitor) and drivers that you use



# Using Avanti

---

If you elect to use the Avanti interface, which is SYSPRO's web-based interface, none of these factors cause any adverse display issues, as all the screens scale exactly as expected.

# Using the classic SYSPRO interface

---

If you choose to use the classic SYSPRO interface, you may experience some of the issues discussed below. These factors are usually only an issue when, for example, you have a large, high resolution monitor you would like to use to demonstrate SYSPRO.

## 100% SCALE

If you select 100% as the scale for your text and apps:

SYSPRO will display as expected and successive windows will display as expected when you log in and run other programs.

For example, you will see this when you log in:

The screenshot shows the SYSPRO 8 login window. The window title is "SYSPRO". The header area contains the SYSPRO 8 logo and a refresh icon. The main form area includes the following fields and controls:

- User name:** A dropdown menu with "ADMIN" selected. Below it, the text "ADMIN - SYSPRO Administrator" is displayed.
- Password:** A text input field.
- Company:** A dropdown menu with "EDU1" selected and a search icon to its right.
- Company password:** A text input field.

At the bottom of the form is a large blue button labeled "Login". Below this button are three links: "Forgot password?", "View users", and "Exit SYSPRO". At the very bottom of the window, there is a small text note: "Program protected as described in Help About SYSPRO".

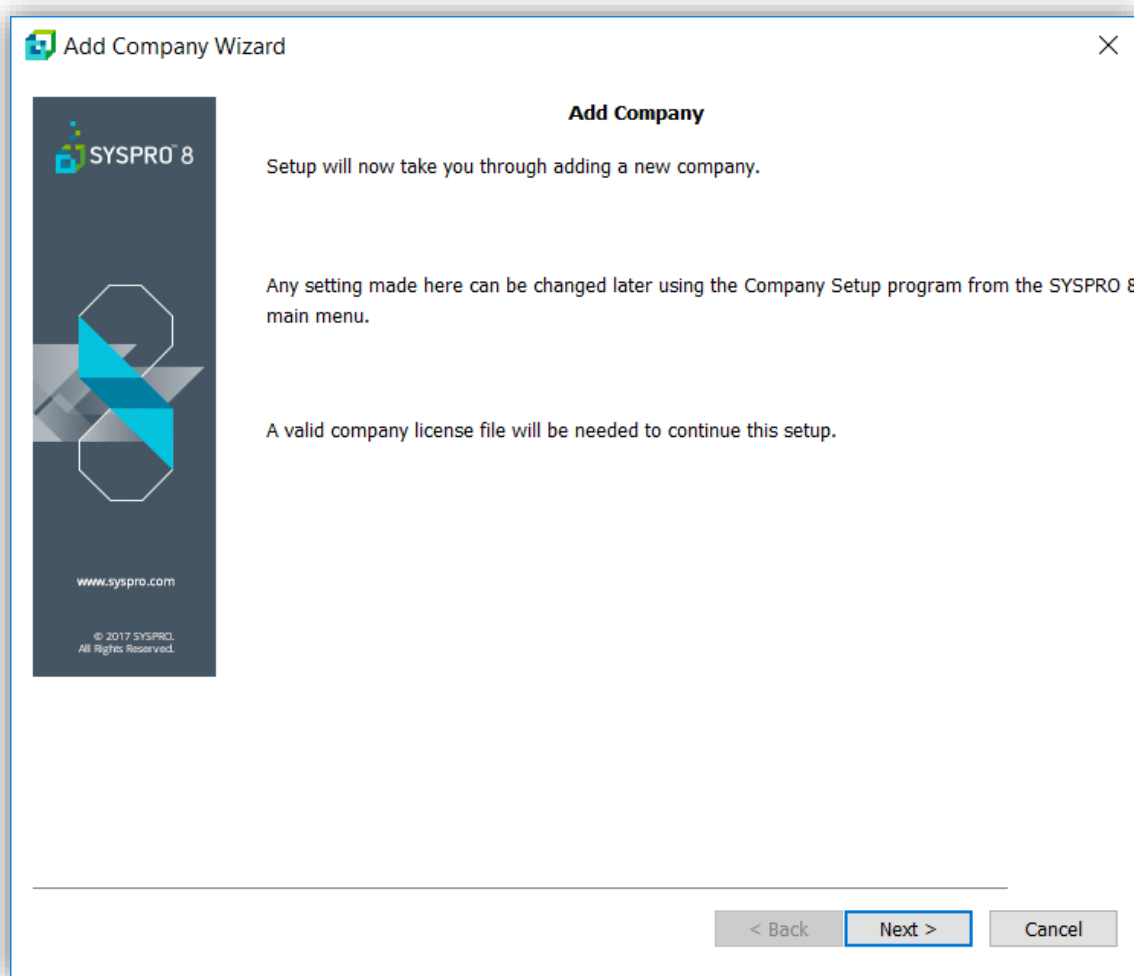
## 125% SCALE

If you select 125% as the scale for your text and apps:

Depending on your settings or hardware and drivers, this may or may not affect how SYSPRO is displayed.

At most, you might see this type of behavior in programs which are run before the main menu in SYSPRO is loaded.

For example, when adding a new company from the login screen:



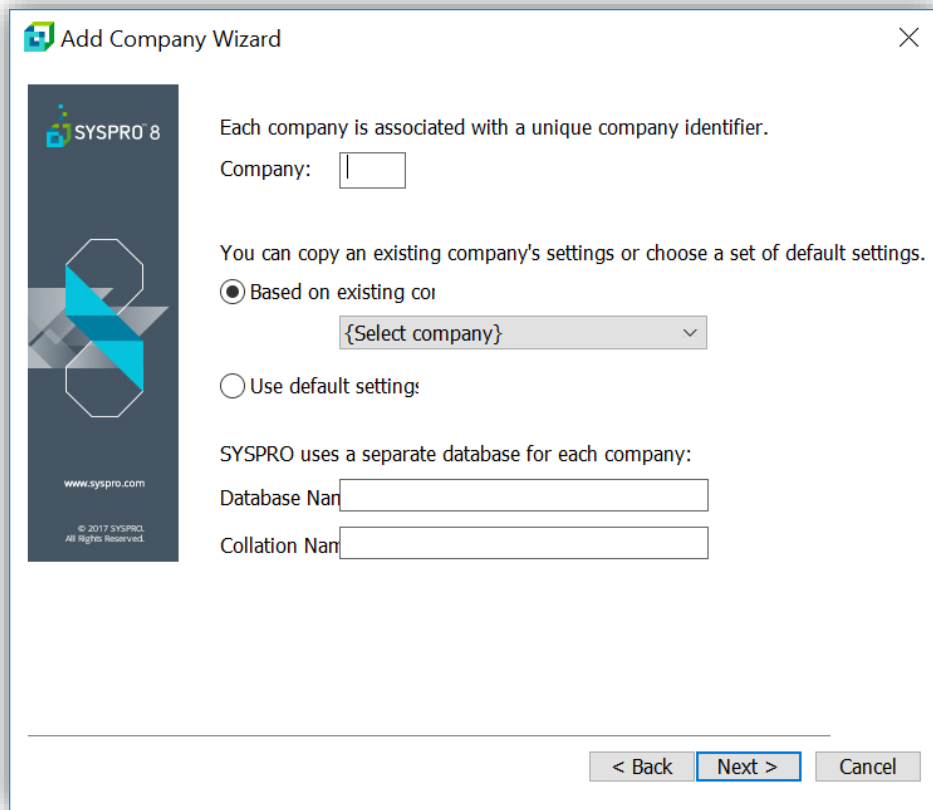
**Note:** We are changing several of these screens to allow for slightly higher display options, so this shouldn't be an issue going forward.

## 150% SCALE OR HIGHER

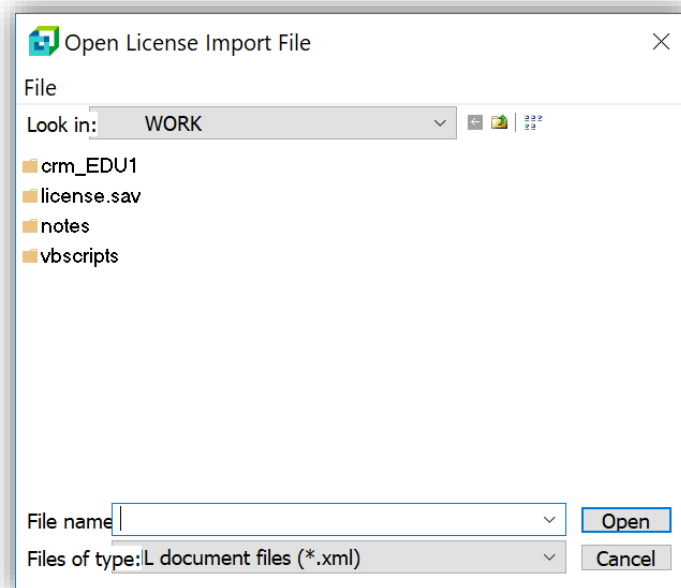
If you select 150% or higher as the scale for your text and apps:

You might have more serious display issues.

As an example with the scaling set as 150%:



Another example with the scaling set as 170%:





## OTHER DISPLAY ISSUES

Once you log in to SYSPRO, most of the display issues won't be apparent, but any screen with radio buttons will have these buttons overlapping each other.

Examples at 150%:

| Pricing          |   |
|------------------|---|
| Pricing category | A   |
| Pricing method   | <input checked="" type="radio"/> Coded<br><input type="radio"/> Discounted<br><input type="radio"/> Quantity discount |
| List price       | 0.00000   |
| List price basis | Stocking unit of me   |
| Commission %     |   |
| Currency         | \$ - Local Currency   |
| List price code  | A   |
| Minimum % at     | 0.00  |

|   |
|---|
| <input type="radio"/> MPS item                |
| <input checked="" type="radio"/> Non-MPS item |
| <input type="radio"/> Statistical item        |
| I - Forecasts only                            |
| 100   |

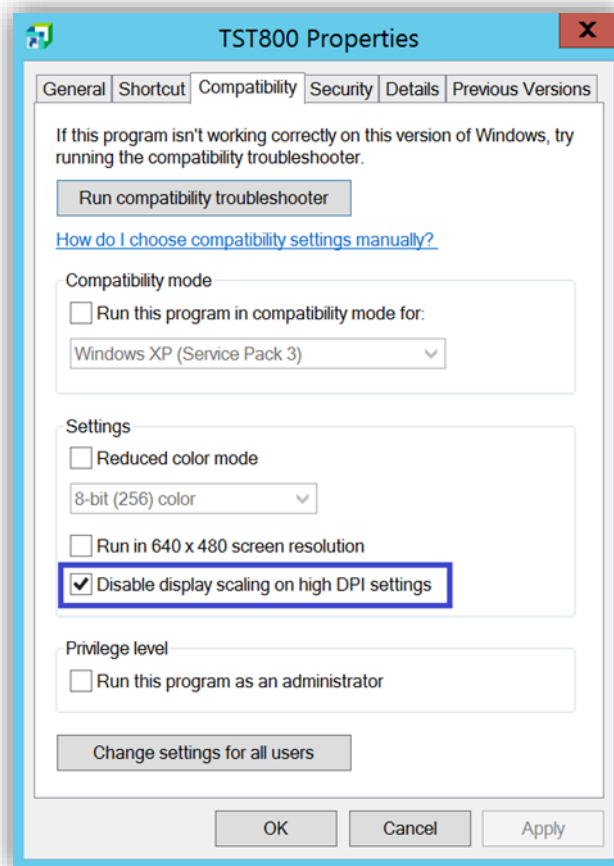
## POSSIBLE REMEDY

There are some options you can try to overcome these issues.

For example, in Server 2012, the following option often provides some relief:

**SYSPRO shortcut properties -> Compatibility tab**

1. Check the option **Disable display scaling on high DPI settings** – see below:



Unfortunately, due the number of different Windows operating systems combined with even higher numbers of hardware/driver combinations, we are unable to give any precise recommendations regarding exactly what options you should choose to maximize your SYSPRO experience.

For further reading, we recommend the following articles:

- <https://support.microsoft.com/en-gb/help/3025083/windows-scaling-issues-for-high-dpi-devices>
- <https://support.microsoft.com/en-za/help/2900023/some-desktop-applications-may-appear-blurred-on-high-dpi-displays>



## AFRICA

### **SYSPRO South Africa**

Block A  
Sunninghill Place  
9 Simba Road  
Sunninghill  
Johannesburg  
2191  
South Africa  
Tel: +27 (0) 11 461 1000  
Email: info@za.syspro.com

### **SYSPRO South Africa**

Block A  
Lagoon Beach Office Park  
Cnr Marine & Boundary Rd  
Milnerton  
Cape Town  
7435  
South Africa  
Tel: +27 (0) 21 552 2220  
Email: info@za.syspro.com

### **SYSPRO South Africa**

4 Nollsworth Crescent  
Nollsworth Park  
La Lucia Ridge  
La Lucia  
Durban North  
4019  
South Africa  
Tel: +27 (0) 31 566 4240  
Email: info@za.syspro.com

### **SYSPRO East Africa**

Ground Floor – Office No.1 E  
Panari Sky Centre  
Mombasa Road  
Nairobi  
Kenya  
Tel: +254 720 909 644  
+254 720 909 530  
Email: info@za.syspro.com

## ASIA-PACIFIC

### **SYSPRO Australia**

Suite 1102, Level 12  
201 Miller Street  
North Sydney  
NSW 2060  
Australia  
Tel: +61 (2) 9870 5555  
Toll free: +1 300 882 311  
Email: info@au.syspro.com

### **SYSPRO Australia**

1/14 Business Park Drive  
Notting Hill  
Victoria  
Melbourne  
3168  
Australia  
Tel: +1300 882 311  
E-mail: info@au.syspro.com

### **SYSPRO Asia**

8 Eu Tong Sen Street  
#19-91 The Central  
Singapore  
059818  
Tel: +65 6256 1921  
E-mail: info@sg.syspro.com

## CANADA

### **SYSPRO Canada**

4400 Dominion Street  
Suite 215  
Burnaby  
Vancouver  
British Columbia  
Canada  
V5G 4G3  
Tel: +1 (604) 451 8889  
Toll free: +1 888 259 6666  
Email: info@ca.syspro.com

### **SYSPRO Canada**

5995 Avebury Road  
Suite 902  
Mississauga  
Toronto  
Ontario  
Canada  
L5R 3P9  
Tel: +1 905 502 5502  
Email: info@ca.syspro.com

### **SYSPRO Canada**

6080 Young Street  
Suite 1002  
Halifax  
Nova Scotia  
Canada  
B3K 5L2  
Tel: +1 902 423 1256  
Toll free: +1 866 979 7776  
Email: info@ca.syspro.com

## EUROPE

### **SYSPRO United Kingdom**

Baltimore House  
50 Kansas Avenue  
Salford Quays  
Manchester  
United Kingdom  
M50 2GL  
Tel: +44 161 876 4498  
Email: info@uk.syspro.com

## USA

### **SYSPRO USA and Americas**

959 South Coast Drive  
Suite 100  
Costa Mesa  
California  
92626  
USA  
Tel: +1 (714) 437 1000  
Toll free: +1 800 369 8649  
Email: info@us.syspro.com

[www.syspro.com](http://www.syspro.com)

V01 Copyright © 2017 SYSPRO. All rights reserved.  
All brand and product names are trademarks or  
registered trademarks of their respective holders.